

Архангельск (8182)63-90-72  
 Астана (7172)727-132  
 Астрахань (8512)99-46-04  
 Барнаул (3852)73-04-60  
 Белгород (4722)40-23-64  
 Брянск (4832)59-03-52  
 Владивосток (423)249-28-31  
 Волгоград (844)278-03-48  
 Вологда (8172)26-41-59  
 Воронеж (473)204-51-73  
 Екатеринбург (343)384-55-89  
 Иваново (4932)77-34-06

Ижевск (3412)26-03-58  
 Иркутск (395)279-98-46  
 Казань (843)206-01-48  
 Калининград (4012)72-03-81  
 Калуга (4842)92-23-67  
 Кемерово (3842)65-04-62  
 Киров (8332)68-02-04  
 Краснодар (861)203-40-90  
 Красноярск (391)204-63-61  
 Курск (4712)77-13-04  
 Липецк (4742)52-20-81  
 Киргизия (996)312-96-26-47

Магнитогорск (3519)55-03-13  
 Москва (495)268-04-70  
 Мурманск (8152)59-64-93  
 Набережные Челны (8552)20-53-41  
 Нижний Новгород (831)429-08-12  
 Новокузнецк (3843)20-46-81  
 Новосибирск (383)227-86-73  
 Омск (3812)21-46-40  
 Орел (4862)44-53-42  
 Оренбург (3532)37-68-04  
 Пенза (8412)22-31-16  
 Казахстан (772)734-952-31

Пермь (342)205-81-47  
 Ростов-на-Дону (863)308-18-15  
 Рязань (4912)46-61-64  
 Самара (846)206-03-16  
 Санкт-Петербург (812)309-46-40  
 Саратов (845)249-38-78  
 Севастополь (8692)22-31-93  
 Симферополь (3652)67-13-56  
 Смоленск (4812)29-41-54  
 Сочи (862)225-72-31  
 Ставрополь (8652)20-65-13  
 Таджикистан (992)427-82-92-69

Сургут (3462)77-98-35  
 Тверь (4822)63-31-35  
 Томск (3822)98-41-53  
 Тула (4872)74-02-29  
 Тюмень (3452)66-21-18  
 Ульяновск (8422)24-23-59  
 Уфа (347)229-48-12  
 Хабаровск (4212)92-98-04  
 Челябинск (351)202-03-61  
 Череповец (8202)49-02-64  
 Ярославль (4852)69-52-93

<https://sedelon.nt-rt.ru/> || [sde@nt-rt.ru](mailto:sde@nt-rt.ru)

## Stainless Steel Gate Valve



### Application

Face to Face Dimensions: ANSI B16.10

Flange end Dimension : ANSI B16.5

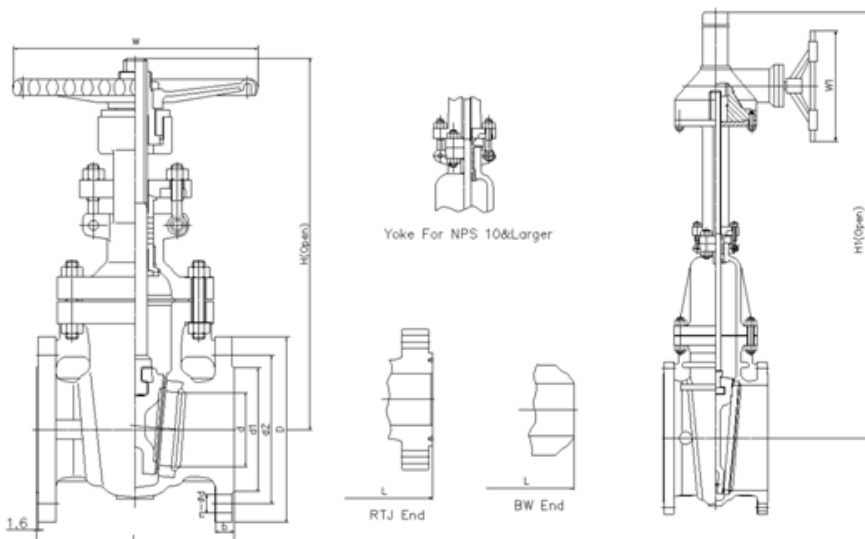
Butt Welded Dimensions : ANSI B16.25

Design and Manufacture : API 600

Pressure Test : API 598

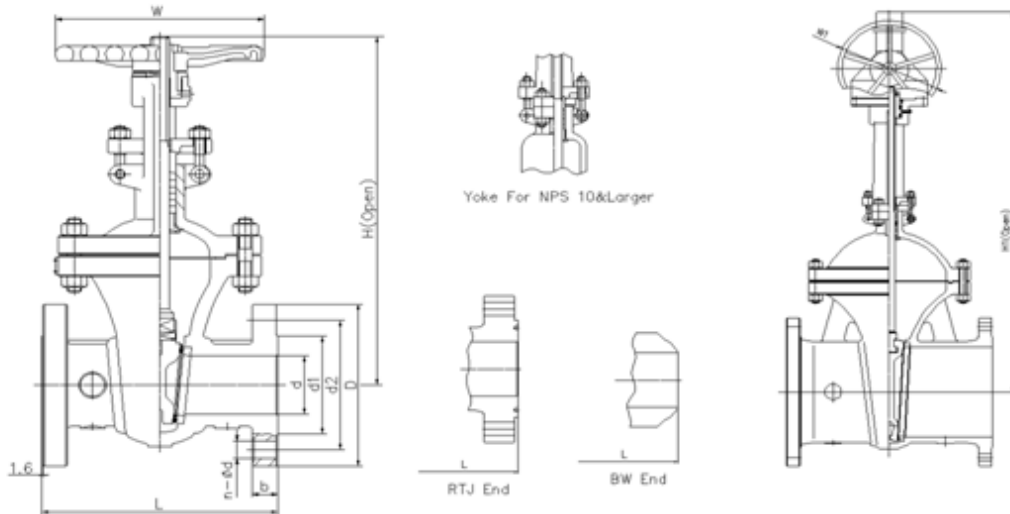
Main material : CF8、CF8M、CF3、CF3M、CN7M、Monel、20# Alloys、4A、5A, ect.

### Class150 Stainless Steel Gate Valve



| NPS    | in | 2     | 2 1/2 | 3     | 4     | 5    | 6     | 8     | 10    | 12    | 14    | 16    | 18    | 20    | 24    |
|--------|----|-------|-------|-------|-------|------|-------|-------|-------|-------|-------|-------|-------|-------|-------|
| d      | mm | 51    | 64    | 76    | 102   | 127  | 152   | 203   | 254   | 305   | 337   | 387   | 438   | 489   | 591   |
| L(RF)  | mm | 178   | 190   | 203   | 229   | 254  | 267   | 292   | 330   | 356   | 381   | 406   | 432   | 457   | 508   |
| L(BW)  | mm | 216   | 241   | 283   | 305   | 381  | 403   | 419   | 457   | 502   | 572   | 610   | 660   | 711   | 813   |
| L(RTJ) | mm | 191   | 203   | 216   | 241   | 267  | 279   | 305   | 343   | 368   | 394   | 419   | 445   | 470   | 521   |
| d1     | mm | 92    | 105   | 127   | 157   | 186  | 216   | 270   | 324   | 381   | 413   | 470   | 533   | 584   | 692   |
| d2     | mm | 120.5 | 139.5 | 152.5 | 190.5 | 216  | 241.5 | 298.5 | 362   | 432   | 476   | 540   | 578   | 635   | 749.5 |
| D      | mm | 152   | 178   | 190   | 229   | 254  | 279   | 343   | 406   | 483   | 533   | 597   | 635   | 699   | 813   |
| b      | mm | 16    | 18    | 19    | 24    | 24   | 26    | 29    | 31    | 32    | 35    | 37    | 40    | 43    | 48    |
| n-Φd   | mm | 4-19  | 4-19  | 4-19  | 8-19  | 8-22 | 8-22  | 8-22  | 12-25 | 12-25 | 12-29 | 16-29 | 16-32 | 20-32 | 20-35 |
| H      | mm | 400   | 435   | 515   | 595   | 725  | 780   | 975   | 1150  | 1380  | 1545  | 1733  | 1915  | 2122  | 2520  |
| H1     | mm |       |       |       |       |      | 820   | 1020  | 1200  | 1430  | 1580  | 1780  | 1990  | 2220  | 2600  |
| W      | mm | 200   | 200   | 250   | 280   | 280  | 300   | 350   | 400   | 450   | 500   | 500   | 500   | 600   | 600   |
| W1     | mm |       |       |       |       |      | 310   | 310   | 310   | 310   | 310   | 460   | 460   | 460   | 460   |

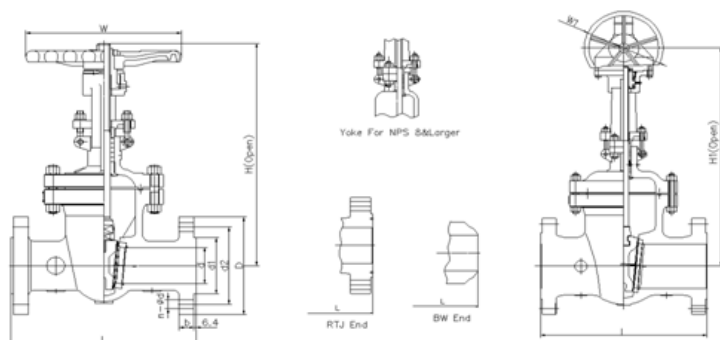
**Class300 Stainless Steel Gate Valve**



| NPS    | in | 2   | 2 1/2 | 3     | 4   | 5   | 6   | 8   | 10    | 12  | 14    | 16    | 18    | 20   | 24   |
|--------|----|-----|-------|-------|-----|-----|-----|-----|-------|-----|-------|-------|-------|------|------|
| d      | mm | 51  | 64    | 76    | 102 | 127 | 152 | 203 | 254   | 305 | 337   | 387   | 432   | 483  | 584  |
| L(RF)  | mm | 216 | 241   | 283   | 305 | 381 | 403 | 419 | 457   | 502 | 762   | 838   | 914   | 991  | 1143 |
| L(BW)  | mm | 216 | 241   | 283   | 305 | 381 | 403 | 419 | 457   | 502 | 762   | 838   | 914   | 991  | 1143 |
| L(RTJ) | mm | 232 | 257   | 298   | 321 | 397 | 419 | 435 | 473   | 518 | 778   | 854   | 930   | 1010 | 1165 |
| d1     | mm | 92  | 105   | 127   | 157 | 186 | 216 | 270 | 324   | 381 | 413   | 470   | 533   | 584  | 692  |
| d2     | mm | 127 | 149   | 168.5 | 200 | 235 | 270 | 330 | 387.5 | 451 | 514.5 | 571.5 | 628.5 | 686  | 813  |
| D      | mm | 165 | 190   | 210   | 254 | 279 | 318 | 381 | 445   | 521 | 584   | 648   | 711   | 775  | 914  |
| b      | mm | 23  | 26    | 29    | 32  | 35  | 37  | 42  | 48    | 51  | 54    | 58    | 61    | 64   | 70   |

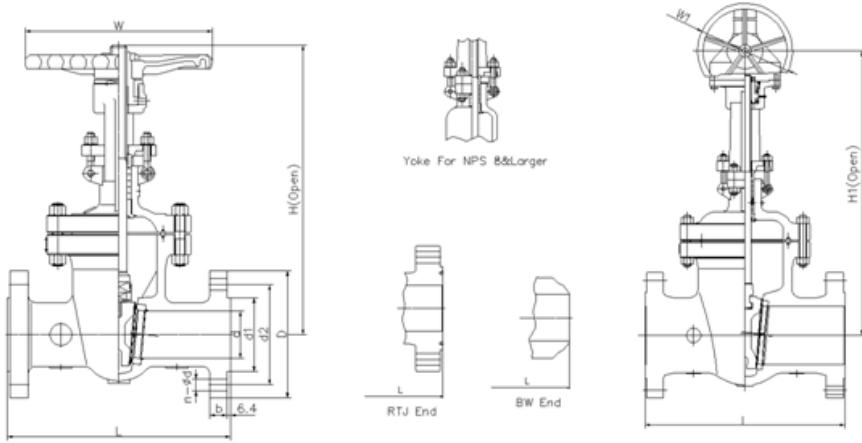
|      |    |      |      |      |      |      |       |       |       |       |       |       |       |       |       |
|------|----|------|------|------|------|------|-------|-------|-------|-------|-------|-------|-------|-------|-------|
| n-Φd | mm | 8-19 | 8-22 | 8-22 | 8-22 | 8-22 | 12-22 | 12-25 | 16-29 | 16-32 | 20-32 | 20-35 | 24-35 | 24-35 | 24-41 |
| H    | mm | 420  | 446  | 537  | 619  | 722  | 806   | 1000  | 1240  | 1425  | 1585  | 1790  | 1960  | 2158  | 2576  |
| H1   | mm |      |      |      | 650  | 750  | 835   | 1030  | 1280  | 1460  | 1620  | 1830  | 2000  | 2220  | 2620  |
| W    | mm | 200  | 200  | 250  | 280  | 300  | 350   | 400   | 450   | 500   | 500   | 600   | 650   | 750   | 900   |
| W1   | mm |      |      |      | 310  | 310  | 310   | 310   | 310   | 310   | 460   | 460   | 460   | 460   | 600   |

### Class600 Stainless Steel Gate Valve



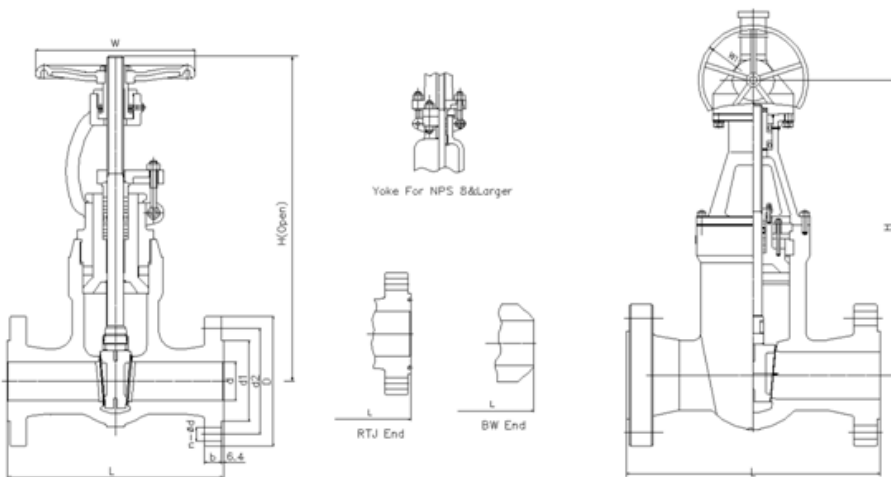
|        |    |      |       |       |      |      |       |       |       |       |       |       |       |       |       |
|--------|----|------|-------|-------|------|------|-------|-------|-------|-------|-------|-------|-------|-------|-------|
| NPS    | in | 2    | 2 1/2 | 3     | 4    | 5    | 6     | 8     | 10    | 12    | 14    | 16    | 18    | 20    | 24    |
| d      | mm | 51   | 64    | 76    | 102  | 127  | 152   | 200   | 248   | 298   | 327   | 375   | 419   | 464   | 559   |
| L(RF)  | mm | 292  | 330   | 356   | 432  | 508  | 559   | 660   | 787   | 838   | 889   | 991   | 1092  | 1194  | 1397  |
| L(BW)  | mm | 292  | 330   | 356   | 432  | 508  | 559   | 660   | 787   | 838   | 889   | 991   | 1092  | 1194  | 1397  |
| L(RTJ) | mm | 295  | 333   | 359   | 435  | 511  | 562   | 664   | 791   | 841   | 892   | 994   | 1095  | 1200  | 1407  |
| d1     | mm | 92   | 105   | 127   | 157  | 186  | 216   | 270   | 324   | 381   | 413   | 470   | 533   | 584   | 692   |
| d2     | mm | 127  | 149   | 168.5 | 216  | 267  | 292   | 349   | 432   | 489   | 527   | 603   | 654   | 724   | 838   |
| D      | mm | 165  | 190   | 210   | 273  | 330  | 356   | 419   | 508   | 559   | 603   | 686   | 743   | 813   | 940   |
| b      | mm | 26   | 29    | 32    | 38   | 45   | 48    | 56    | 64    | 67    | 70    | 77    | 83    | 89    | 102   |
| n-Φd   | mm | 8-19 | 8-22  | 8-22  | 8-25 | 8-29 | 12-29 | 12-32 | 16-35 | 20-35 | 20-38 | 20-41 | 20-44 | 24-44 | 24-52 |
| H      | mm | 444  | 500   | 558   | 665  | 760  | 868   | 1073  | 1263  | 1600  | 1705  | 1835  |       |       |       |
| H1     | mm |      |       | 585   | 695  | 790  | 900   | 1110  | 1300  | 1650  | 1750  | 1900  | 2020  | 2172  | 2650  |
| W      | mm | 200  | 250   | 280   | 300  | 350  | 450   | 500   | 650   | 700   | 900   | 900   |       |       |       |
| W1     | mm |      |       | 310   | 310  | 310  | 310   | 310   | 460   | 460   | 460   | 460   | 600   | 600   | 600   |

### Class900 Stainless Steel Gate Valve



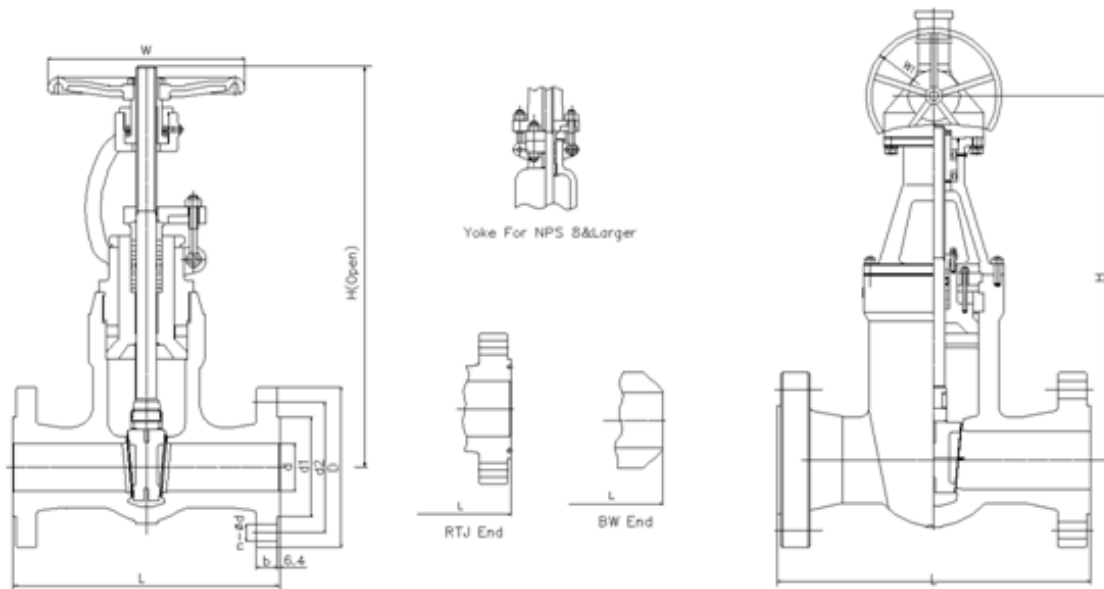
| NPS    | in | 2    | 2 1/2 | 3     | 4    | 5     | 6     | 8     | 10    | 12    | 14    | 16    | 18    | 20    | 24    |
|--------|----|------|-------|-------|------|-------|-------|-------|-------|-------|-------|-------|-------|-------|-------|
| d      | mm | 47   | 57    | 73    | 98   | 121   | 146   | 190   | 234   | 282   | 311   | 354   | 400   | 444   | 533   |
| L(RF)  | mm | 368  | 419   | 381   | 457  | 559   | 610   | 737   | 838   | 965   | 1029  | 1130  | 1219  | 1321  | 1549  |
| L(BW)  | mm | 368  | 419   | 381   | 457  | 559   | 610   | 737   | 838   | 965   | 1029  | 1130  | 1219  | 1321  | 1549  |
| L(RTJ) | mm | 371  | 422   | 384   | 460  | 562   | 613   | 740   | 841   | 968   | 1039  | 1140  | 1232  | 1334  | 1568  |
| d1     | mm | 92   | 105   | 127   | 157  | 186   | 216   | 270   | 324   | 381   | 413   | 470   | 533   | 584   | 692   |
| d2     | mm | 165  | 190.5 | 190.5 | 235  | 279.4 | 317.5 | 393.7 | 469.9 | 533.4 | 558.8 | 615.9 | 685.8 | 749.3 | 901.7 |
| D      | mm | 216  | 244   | 241   | 292  | 349   | 381   | 470   | 545   | 610   | 640   | 705   | 785   | 855   | 1040  |
| b      | mm | 38.5 | 41.5  | 38.5  | 44.5 | 51    | 56    | 64    | 70    | 79.5  | 86    | 89    | 102   | 108   | 140   |
| n-Φd   | mm | 8-26 | 8-29  | 8-26  | 8-32 | 8-35  | 12-32 | 12-39 | 16-39 | 20-39 | 20-42 | 20-45 | 20-51 | 20-54 | 20-67 |
| H      | mm | 500  | 550   | 610   | 702  | 850   | 980   | 1100  | 1320  | 1500  | 1900  | 2050  |       |       |       |
| H1     | mm |      |       | 660   | 750  | 900   | 1060  | 1140  | 1370  | 1560  | 1950  | 2100  | 2300  | 2450  | 2600  |
| W      | mm | 280  | 280   | 300   | 350  | 400   | 500   | 650   | 700   | 900   | 900   | 900   |       |       |       |
| W1     | mm |      |       | 310   | 310  | 310   | 460   | 460   | 460   | 460   | 600   | 600   | 600   | 600   | 600   |

**Class1500 Stainless Steel Gate Valve**



| NPS    | in | 2    | 2 1/2 | 3     | 4     | 5     | 6     | 8     | 10    | 12    | 14    | 16    |
|--------|----|------|-------|-------|-------|-------|-------|-------|-------|-------|-------|-------|
| d      | mm | 47   | 57    | 70    | 92    | 111   | 136   | 178   | 222   | 263   | 289   | 330   |
| L(RF)  | mm | 368  | 419   | 470   | 546   | 673   | 705   | 832   | 991   | 1130  | 1257  | 1384  |
| L(BW)  | mm | 368  | 419   | 470   | 546   | 673   | 705   | 832   | 991   | 1130  | 1257  | 1384  |
| L(RTJ) | mm | 371  | 422   | 473   | 549   | 676   | 711   | 841   | 1000  | 1146  | 1276  | 1407  |
| d1     | mm | 92   | 105   | 127   | 157   | 186   | 216   | 270   | 324   | 381   | 413   | 470   |
| d2     | mm | 165  | 190.5 | 203.2 | 241.3 | 292.1 | 317.5 | 393.7 | 482.6 | 571.5 | 635   | 704.8 |
| D      | mm | 216  | 244   | 267   | 311   | 375   | 394   | 483   | 585   | 675   | 750   | 825   |
| b      | mm | 38.5 | 41.5  | 48    | 54    | 73.5  | 83    | 92.9  | 108   | 124   | 133.5 | 146.5 |
| n-Φd   | mm | 8-26 | 8-29  | 8-32  | 8-35  | 8-42  | 12-39 | 12-45 | 12-51 | 16-54 | 16-61 | 16-67 |
| H      | mm | 510  | 560   | 620   | 728   | 870   | 1000  | 1130  | 1360  |       |       |       |
| H1     | mm |      |       | 670   | 770   | 920   | 1070  | 1180  | 1410  | 1620  | 2020  | 2180  |
| W      | mm | 280  | 300   | 350   | 400   | 450   | 500   | 750   | 900   |       |       |       |
| W1     | mm |      |       | 310   | 310   | 310   | 460   | 460   | 600   | 600   | 600   | 600   |

**Class2500 Stainless Steel Gate Valve**



| NPS    | in | 2     | 2 1/2 | 3     | 4   | 5     | 6     | 8     | 10    | 12    |
|--------|----|-------|-------|-------|-----|-------|-------|-------|-------|-------|
| d      | mm | 38    | 47    | 57    | 73  | 92    | 111   | 146   | 184   | 219   |
| L(RF)  | mm | 451   | 508   | 578   | 673 | 794   | 914   | 1022  | 1270  | 1422  |
| L(BW)  | mm | 451   | 508   | 578   | 673 | 794   | 914   | 1022  | 1270  | 1422  |
| L(RTJ) | mm | 454   | 514   | 584   | 683 | 807   | 927   | 1038  | 1292  | 1445  |
| d1     | mm | 92    | 105   | 127   | 157 | 186   | 216   | 270   | 324   | 381   |
| d2     | mm | 171.4 | 196.8 | 228.6 | 273 | 323.8 | 368.3 | 438.1 | 539.7 | 619.1 |
| D      | mm | 235   | 267   | 305   | 356 | 419   | 483   | 550   | 675   | 760   |

|      |    |      |      |      |      |      |      |       |       |       |
|------|----|------|------|------|------|------|------|-------|-------|-------|
| b    | mm | 51   | 57.5 | 67   | 76.5 | 92.5 | 108  | 127   | 165.5 | 184.5 |
| n-Φd | mm | 8-29 | 8-32 | 8-35 | 8-42 | 8-48 | 8-54 | 12-54 | 12-67 | 12-74 |
| H    | mm | 530  | 580  | 650  | 750  | 900  | 1040 | 1150  | 1400  |       |
| H1   | mm | 580  | 630  | 700  | 800  | 960  | 1100 | 1200  | 1460  | 1660  |
| W    | mm | 280  | 300  | 350  | 400  | 500  | 600  | 750   | 900   |       |
| W1   | mm | 310  | 310  | 310  | 310  | 460  | 460  | 460   | 600   | 600   |

**API Trim NO. Table**

| No of internal parts | Seat ring or body | Gate, disc , ball or body | Stem        | No of internal parts | Seat ring or body | Gate, disc , ball or body | Stem     |
|----------------------|-------------------|---------------------------|-------------|----------------------|-------------------|---------------------------|----------|
| 01                   | 13Cr              | 13Cr                      | 13Cr        | 31                   | STELLITE          | 321SS                     | 321SS    |
| 02                   | 304SS             | 304SS                     | 304SS       | 32                   | STELLITE          | STELLITE                  | 321SS    |
| 03                   | 310SS             | 310SS                     | 310SS       | 33                   | 347SS             | 347SS                     | 347SS    |
| 04                   | HARD 13Cr         | HARD 13Cr                 | 13Cr        | 34                   | STELLITE          | 347SS                     | 347SS    |
| 05                   | STELLITE          | STELLITE                  | 13Cr        | 35                   | NICKEL ALLOY      | 13Cr                      | 13Cr     |
| 06                   | Cu-Ni             | 13Cr                      | 13Cr        | 36                   | A105/PTFE         | A105+ENP                  | A105+ENP |
| 07                   | 13Cr              | HARD 13Cr                 | 13Cr        | 37                   | A105/PTFE         | WCB+ENP                   | A105+ENP |
| 08                   | STELLITE          | 13Cr                      | 13Cr        | 38                   | 13Cr/PTFE         | 13Cr                      | 13Cr     |
| 09                   | Cu-Ni             | Cu-Ni                     | Cu-Ni       | 39                   | 304SS/PTFE        | 304SS                     | 304SS    |
| 10                   | 316SS             | 316SS                     | 316SS       | 40                   | 316SS/PTFE        | 316SS                     | 316SS    |
| 11                   | Cu-Ni             | STELLITE                  | Cu-Ni       | 41                   | A105/RPTFE        | A105+ENP                  | A105+ENP |
| 12                   | STELLITE          | 316SS                     | 316SS       | 42                   | A105/RPTFE        | WCB+ENP                   | A105+ENP |
| 13                   | ALLOY 20          | ALLOY 20                  | ALLOY 20    | 43                   | 13Cr/RPTFE        | 13Cr                      | 13Cr     |
| 14                   | STELLITE          | ALLOY 20                  | ALLOY 20    | 44                   | 304SS/RPTFE       | 304SS                     | 304SS    |
| 15                   | STELLITE          | STELLITE                  | 304SS       | 45                   | 316SS/RPTFE       | 316SS                     | 316SS    |
| 16                   | STELLITE          | STELLITE                  | 316SS       | 46                   | A105/NYLON        | A105+ENP                  | A105+ENP |
| 17                   | STELLITE          | STELLITE                  | 347SS       | 47                   | A105/NYLON        | WCB+ENP                   | A105+ENP |
| 18                   | STELLITE          | STELLITE                  | ALLOY 20    | 48                   | A105/NYLON        | 304SS                     | 304SS    |
| 19                   | MONEL             | MONEL                     | MONEL       | 49                   | A105/NYLON        | 316SS                     | 316SS    |
| 20                   | BRONZE            | BRONZE                    | 13Cr        | 50                   | 13Cr/NYLON        | 13Cr                      | 13Cr     |
| 21                   | HASTELLOY B       | HASTELLOY B               | HASTELLOY B | 51                   | 304SS/NYLON       | 304SS                     | 304SS    |
| 22                   |                   | HASTELLOY C               | HASTELLOY C | 52                   | 316SS/NYLON       | 316SS                     | 316SS    |
| 23                   | STELLITE          | 304SS                     | 304SS       | 53                   | A105/PEEK         | A105+ENP                  | A105+ENP |
| 24                   | 304LSS            | 304LSS                    | 304LSS      | 54                   | A105/PEEK         | WCB+ENP                   | A105+ENP |
| 25                   | STELLITE          | 304LSS                    | 304LSS      | 55                   | 13Cr/PEEK         | 13Cr                      | 13Cr     |

|    |          |          |        |    |            |       |       |
|----|----------|----------|--------|----|------------|-------|-------|
| 26 | STELLITE | STELLITE | 304LSS | 56 | 304SS/PEEK | 304SS | 304SS |
| 27 | 316LSS   | 316LSS   | 316LSS | 57 | 316SS/PEEK | 316SS | 316SS |
| 28 | STELLITE | 316LSS   | 316LSS |    |            |       |       |
| 29 | STELLITE | STELLITE | 316LSS |    |            |       |       |
| 30 | 321SS    | 321SS    | 321SS  |    |            |       |       |

Note: please indicate it directly in the order for the internal part's material uncovered in the table

Архангельск (8182)63-90-72  
Астана (7172)727-132  
Астрахань (8512)99-46-04  
Барнаул (3852)73-04-60  
Белгород (4722)40-23-64  
Брянск (4832)59-03-52  
Владивосток (423)249-28-31  
Волгоград (844)278-03-48  
Вологда (8172)26-41-59  
Воронеж (473)204-51-73  
Екатеринбург (343)384-55-89  
Иваново (4932)77-34-06

Ижевск (3412)26-03-58  
Иркутск (395)279-98-46  
Казань (843)206-01-48  
Калининград (4012)72-03-81  
Калуга (4842)92-23-67  
Кемерово (3842)65-04-62  
Киров (8332)68-02-04  
Краснодар (861)203-40-90  
Красноярск (391)204-63-61  
Курск (4712)77-13-04  
Липецк (4742)52-20-81  
Киргизия (996)312-96-26-47

Магнитогорск (3519)55-03-13  
Москва (495)268-04-70  
Мурманск (8152)59-64-93  
Набережные Челны (8552)20-53-41  
Нижний Новгород (831)429-08-12  
Новокузнецк (3843)20-46-81  
Новосибирск (383)227-86-73  
Омск (3812)21-46-40  
Орел (4862)44-53-42  
Оренбург (3532)37-68-04  
Пенза (8412)22-31-16  
Казахстан (772)734-952-31

Пермь (342)205-81-47  
Ростов-на-Дону (863)308-18-15  
Рязань (4912)46-61-64  
Самара (846)206-03-16  
Санкт-Петербург (812)309-46-40  
Саратов (845)249-38-78  
Севастополь (8692)22-31-93  
Симферополь (3652)67-13-56  
Смоленск (4812)29-41-54  
Сочи (862)225-72-31  
Ставрополь (8652)20-65-13  
Таджикистан (992)427-82-92-69

Сургут (3462)77-98-35  
Тверь (4822)63-31-35  
Томск (3822)98-41-53  
Тула (4872)74-02-29  
Тюмень (3452)66-21-18  
Ульяновск (8422)24-23-59  
Уфа (347)229-48-12  
Хабаровск (4212)92-98-04  
Челябинск (351)202-03-61  
Череповец (8202)49-02-64  
Ярославль (4852)69-52-93

<https://sedelon.nt-rt.ru/> || [sde@nt-rt.ru](mailto:sde@nt-rt.ru)