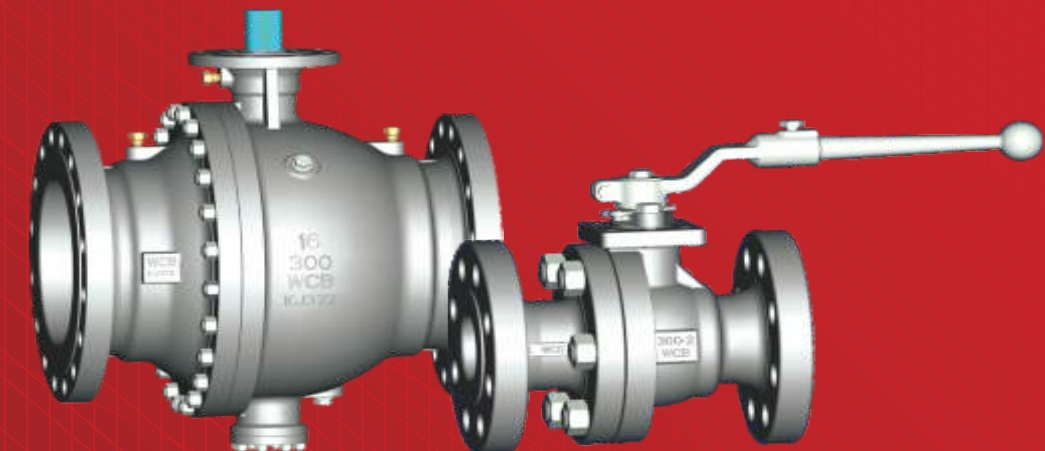


SEDELON VALVES



BALL VALVE SERIES

- Floating Ball Valve
- Trunnion Ball Valve
- Forged Steel Ball Valve
- Top Entry Ball Valve
- Full Welded Ball Valve



Архангельск (8182)63-90-72
Астана (7172)727-132
Астрахань (8512)99-46-04
Бернаул (3852)73-04-60
Велгород (4722)40-23-64
Врянск (4832)59-03-52
Владивосток (423)249-28-31
Волгоград (844)276-03-48
Вологда (8172)26-41-59
Воронеж (473)204-51-73
Катеринбург (343)384-55-89
Кваново (4932)77-34-06

Кировск (3412)26-03-58
Киркутск (395)279-98-46
Казань (843)206-01-48
Калининград (4012)72-03-81
Калуга (4842)92-23-67
Кемерово (3842)65-04-62
Киров (8332)68-02-04
Краснодар (861)203-40-90
Красноярск (391)204-63-61
Курск (4712)77-13-04
Липецк (4742)52-20-81
Киргизия (996)312-96-26-47

Магнитогорск (3519)55-03-13
Москва (495)268-04-70
Мурманск (8152)59-64-93
Набережные Челны (8552)20-53-41
Нижегород (831)429-08-12
Новокузнецк (3843)20-46-81
Новосибирск (383)227-86-73
Омск (3812)21-46-40
Орел (4862)44-53-42
Оренбург (3532)37-68-04
Пенза (8412)22-31-16
Казахстан (772)734-952-31

Пермь (342)205-81-47
Ростов-на-Дону (863)308-18-15
Рязань (4912)46-61-64
Самара (846)206-03-16
Санкт-Петербург (812)309-46-40
Саратов (845)249-38-78
Севастополь (8692)22-31-93
Симферополь (3652)67-13-56
Смоленск (4812)29-41-54
Сочи (862)225-72-31
Ставрополь (8652)20-65-13
Таджикистан (992)427-82-92-69

Тургут (3462)77-98-35
Тверь (4822)63-31-35
Томск (3822)98-41-53
Тула (4872)74-02-29
Тюмень (3452)68-21-18
Ульяновск (8422)24-23-89
Уфа (347)229-48-12
Хабаровск (4212)92-98-04
Челябинск (351)202-03-61
Череповец (8202)49-02-64
Чрославль (4852)69-52-93

<https://sedelon.nt-rt.ru/> || sde@nt-rt.ru



SEDELON VALVES

Gate Valve Series

Globe Valve Series Check Valve Series Strainer Series

Ball Valve Series

Plug Valve Series Butterfly Valve Series

Bronze Valve Series



**To whom
it may
concern**

Dear and Valuable Customer,

Believe and it becomes-SEDELON!

I am writing this letter to thank you for all your trust and support for SEDELON.

I believe you may here find a new continent.

Since 1998, Sedelon has rich experience and various achievement of gate valves, globe valves, check valves, ball valves, and butterfly valves for environment and safety in industrial projects.

Based on your ceaseless valuable feedback, Sedelon now has developed into a strong valve manufacturer which highly devotes to Quality and Service.

What we desire presently is to exceed our customers' expectation and lead a long-term enjoyable relationship with you.

Sincerely and warmly welcome your visit to Sedelon , we are always saving the best for you. Trust Sedelon, trust yourself.

May blessings and happiness all around you.

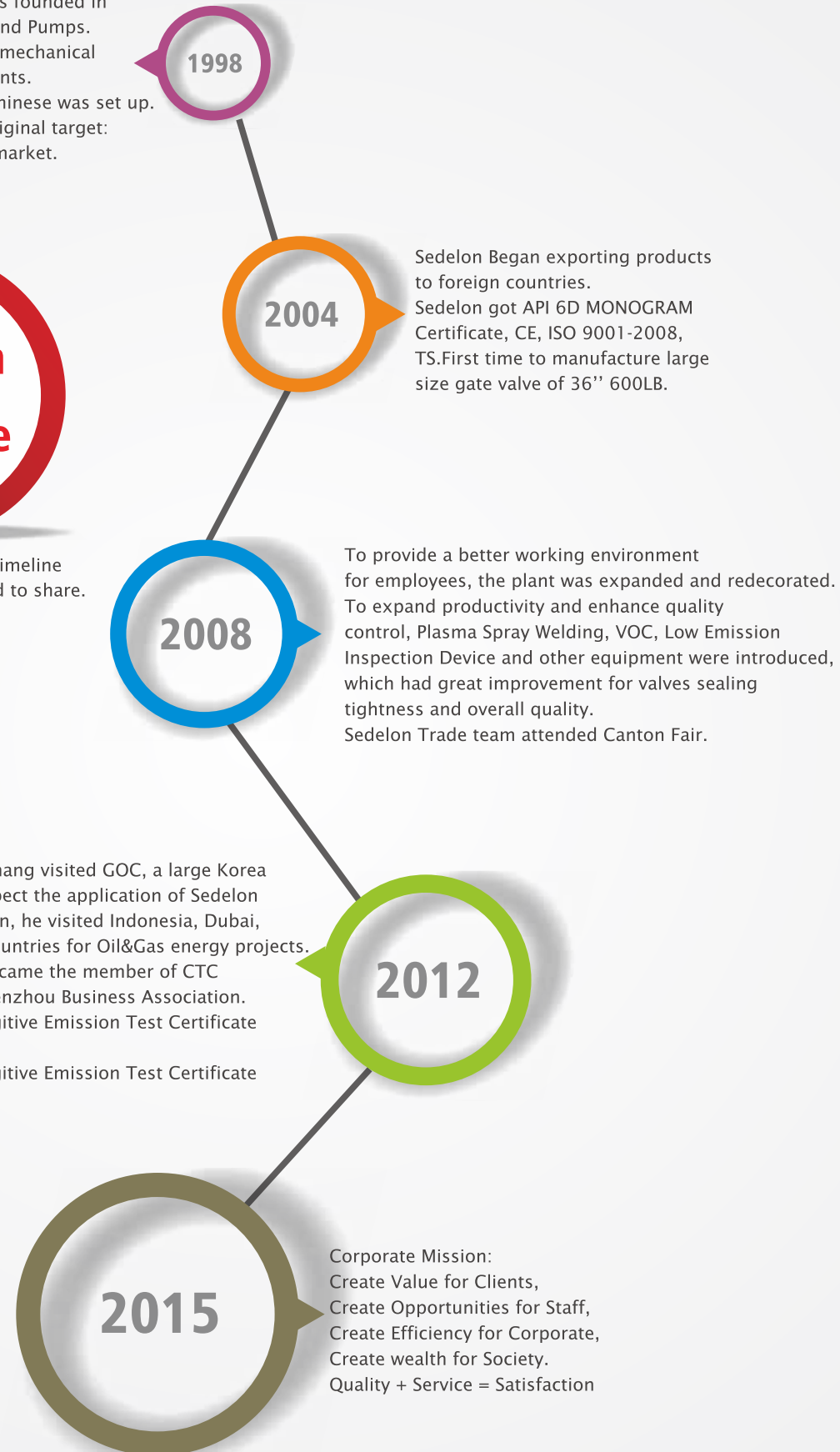
Faithfully

Sam Zhang

The Sedelon Valve Co., Ltd. was founded in Wenzhou, the land of Valves and Pumps. Sedelon introduced advanced mechanical equipment and absorbing talents. Company official website in Chinese was set up. Sedelon had set company's original target: Marching towards the global market.

Sedelon Valve Timeline

Following a rich history timeline of Sedelon Valve is proud to share.



To be continued . . .

China

Since 1998

About Us

Sedelon Valve Company is Established in 1998.
Based in "The City of Valves and Pumps" Wenzhou, Zhejiang, China,
This Company is a Professional Manufacturer.

The main products of this company are Bronze valves, API/DIN gate/globe/ check valves, ball valves, butterfly valves, forged steel valves, ect. Its products have been widely used in petroleum, chemical, metallurgy, electric power, water conservancy, machinery and many other fields.

In order to provide customer high-quality and better service, the company has equipped the system certification such as API6D, CE, ISO9001, TS, Fugitive Emission Certificates, ect.

We have a strong management team which is formed by advanced technical experts, engineers, managers and salesmen. We emphasize the importance of teamwork. Working together and helping each other, we are just like a big and warm family.

The members of Sedelon all uphold the core concept of **"Quality + Service = Satisfaction"**.

We sincerely provide you high-quality products and excellent service. We are striving to be your first choice of manufacturer and supplier.



Producing Equipment

In order to improve the comprehensive strength and provide high performance products, Sedelon had tried our best to meet various requirements from customers by introducing advanced technology equipment. These producing equipment are necessary in valve production and we choose the superior.



- Vertical lathe
- Boring machine
- Engine lathe
- Milling machine
- Drilling machine
- Plasma spray welding machine
- Shot blasting machine
- Numerically controlled lathe
- Forklift trucks



As we all know, quality is the core of a brand, so Sedelon has built a very strict procedure for valve testing, following is our major testing equipment, some of which are imported from abroad.

Testing Equipment

- Automated Discrete Analyzer
- Fugitive Emission Testing(VOC)
- Impact Testing Machine
- Penetrant Testing
- Professional Paint Equipment
- Spectrometer(PMI)
- Wall Thickness Measurement Gauge
- Tension Test Machine
- Valve Pressure Test Device(From 150# to 2500# for 1/2" to 60")



Sedelon® Fugitive Emission Valves

Certificates

Sedelon Valve company compay to date has obtained the following main certifications :

CE, API6D, ISO9001,TS, Fugitive Emission Test Certificate and more to come.

We cherish our honor, We cherish our brand, we believe that we will be better in the near future.

Environmental Protection is Also Our Top Concern.
Sedelon Acquired Fugitive Emission Test Certificate.
Customized Packing Material, Perfect Sealing Performance.



Fugitive Emission Definition :

Pollutant released into air from leaks in equipment, pipe lines, seals, valves, etc., and not from the usual sources such chimneys and vents.

Protection of the Environment :

Environmental protection has been a top-concern topic of the whole world. Solutions are urgently needed to reduce the pressure loss and gas emission.

Perfect Sealing Performance :

Fugitive Emission Valves have already been adopted for the pipes in which the medium is poisonous, flammable and combustible. Gaskets and packing with high density and tightness are key points to avoid the emission.

Specialized Equipment :

The Leakage cannot be judged only by regular Air Test or Hydrostatic Test. In this case, helium instead of nitrogen will be used for the testing. Under the operation of the special facility, valves will be opened and closed automatically and frequently at the speed of 50 times per minutes to ensure the tightness. In the whole process, VOC testing facility is equipped nearby to monitor the sealing performance.

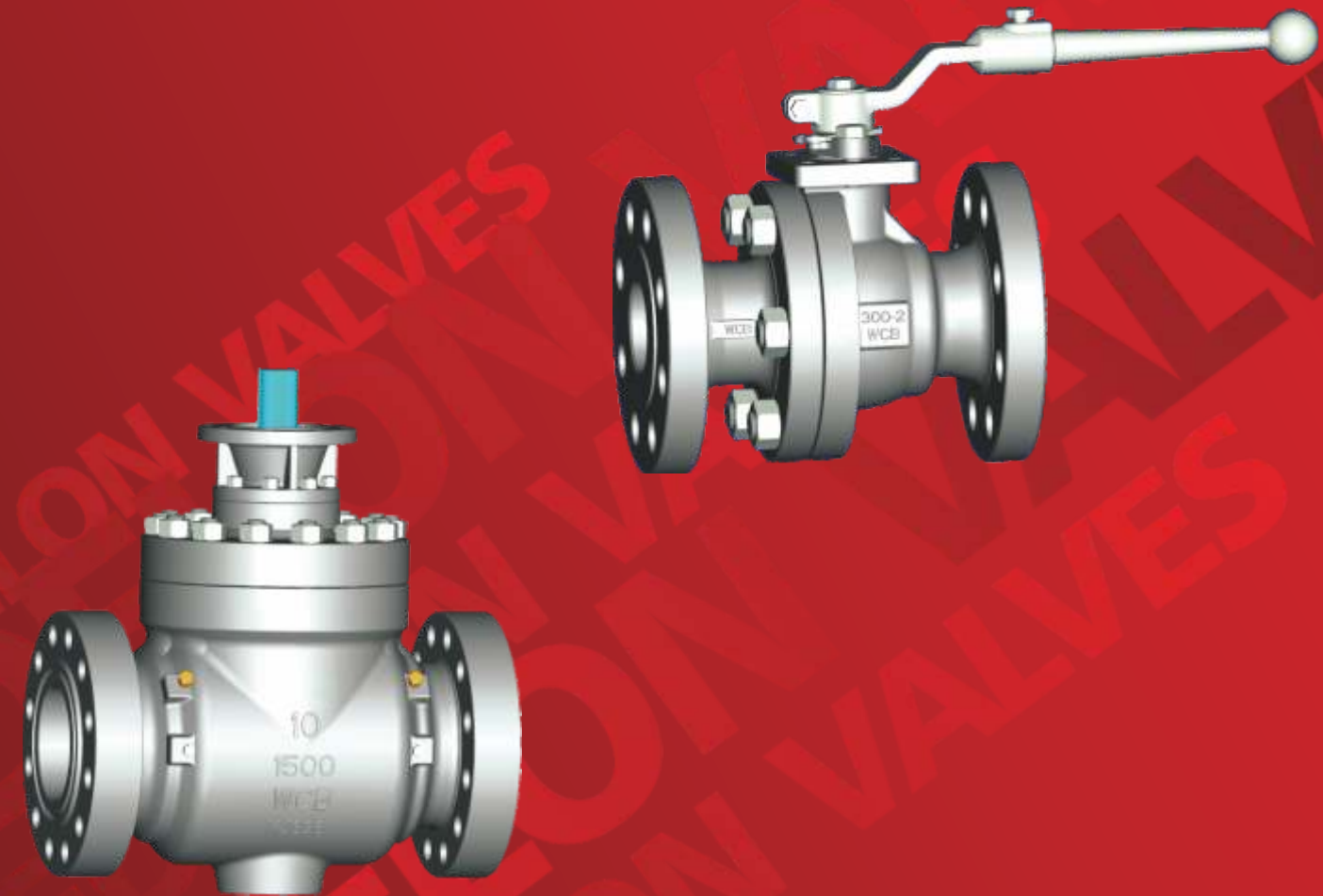
Contents

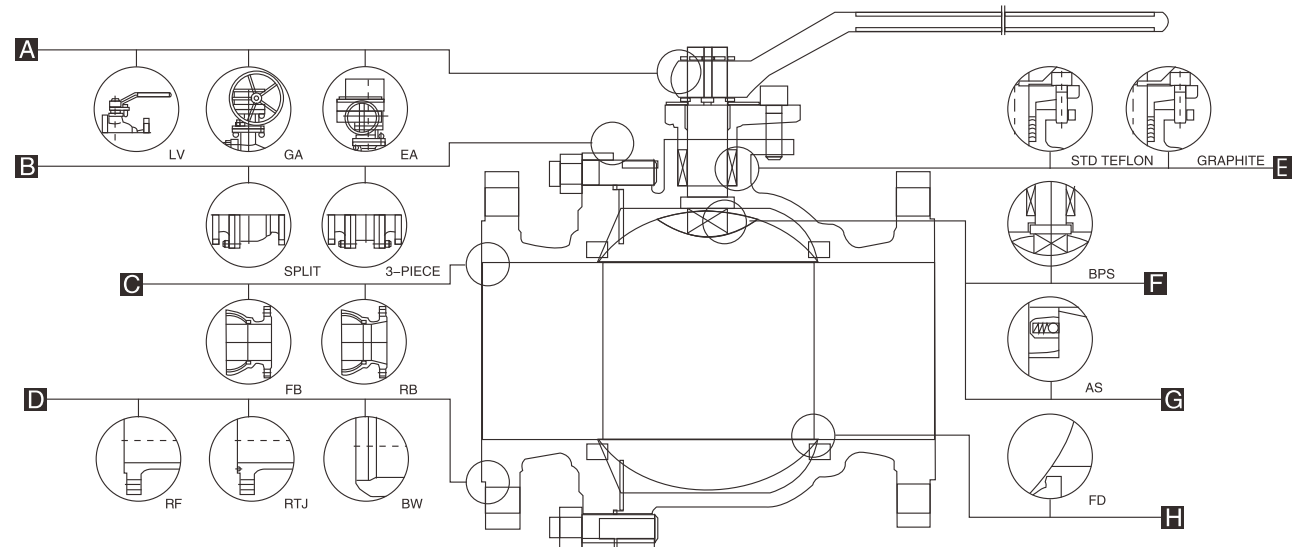
Ball Valve Series

- 04 Floating Cast Steel Ball Valve
150#~600#
- 07 Trunnion Mounted
Cast Steel Ball Valve
150#~2500#
- 11 Floating Forged Steel Ball Valve
150#~600#
- 14 Trunnion Mounted
Forged Steel Ball Valve
150#~2500#
- 17 Top Entry Ball Valve
150#~1500#
- 20 Full Welded
Trunnion Mounted Ball Valve
150#~1500#
- 22 Flanged Ends
150#~2500#
- 25 API Trim NO. Table

 Sedelon

Ball Valves, Cast Steel &
Forged Steel, Type:
Floating, Trunnion Mounted
Top Entry





Operation

Lever and Manual Operation
Worm and Gear Operation
Motor Electric Operation
Pneumatic Operation
Hydraulic Operation

Body & Bonnet

Split Body & Bonnet:
One-Piece
Two-Piece
Three-Piece

BORE

Full Bore
Reduce Bore
Full bore design provides exceptional flow control.

End Connections

RF Flanged Ends
RTJ Flanged Ends
Butt Welding Ends
SW Ends
NPT Ends

Packing

Multiple v-teflon packing, combined with live loading, maintains packing compression under high-cycle and severe service applications. Graphite packing is used for high temperature Situation.

BPS

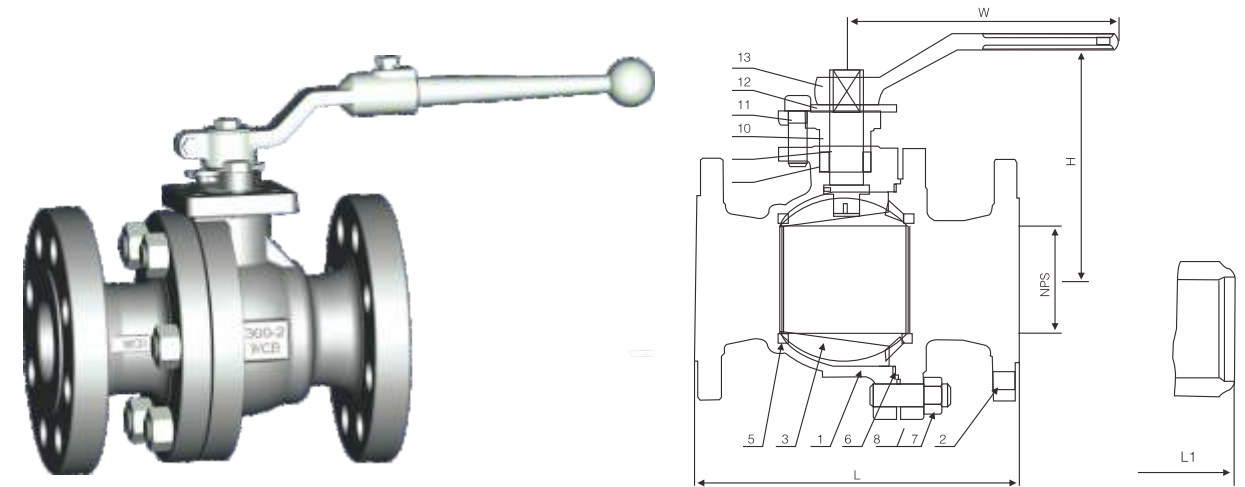
(Blow-out proof stem)
A pressure-safe stem shoulder is designed to protect against failure under excess pressure.

AS

(Anti-static)
Anti-static design feature provided in the valve prevents any accidental fire due to static electric discharge. With the low resistance short circuit path between the ball and the valve body, any static electric charge on the ball due to constant rubbing with in the PTFE seat is prevented- a essential treatment of such flammable liquid as gasoline, natural liquefied gas, propane gas etc.

FS

(Fire safe designed)
Fire safe designed feature make it fire safe when valve exposed to the risk of accidental external fire by additional secondary metal sealing. Fire safe designed to API607 or BS 6755 to grant their operation suitability in case of fire.



Materials of Parts

| No | Part Name | ASTM Materials | | | | |
|----|-----------------|----------------|-----------------|--------------|-----------------|-----------------|
| 1 | Body | A216-WCB | A351-CF8M | A352-LCB | A351 CN7M | A890 4A |
| 2 | Bonnet | A216-WCB | A351-CF8M | A352-LCB | A351 CN7M | A890 4A |
| 3 | Ball | A182-F304 | A182-F316 | A182-F304 | Alloy 20 | A182 F51 |
| 4 | Stem | A276-304 | A276-316 | A276-304 | Alloy 20 | A182 F51 |
| 5 | Seal Ring | R.PTFE | | | PTFE | |
| 6 | Bonnet Gasket | Graphite+304 | PTFE | Graphite+304 | 316+ Graphite | 316+ Graphite |
| 7 | Bonnet Stud | A193-B7 | A193-B8 | A320-L7 | A193 -B8M | A193 -B8M |
| 8 | Bonnet Stud Nut | A194-2H | A194-8 | A194-4 | A194 -8M | A194 -8M |
| 9 | Packing | PTFE | | | | |
| 10 | Gland Flange | A216-WCB | A351-CF8M | A352-LCB | A351 CN7M | A890 4A |
| 11 | Gland Bolt | A193-B7 | A193-B8 | A193-B7 | A193 -B8M | A193 -B8M |
| 12 | Stop Plate | Carbon Steel | Carbon steel+Zn | Carbon Steel | Carbon Steel+Zn | Carbon Steel+Zn |
| 13 | Handle | Carbon Steel | | | | |

Note:1)A105+ENP optional
2)Spiral wound construction.

Applicable standards:

- STEEL BALL VALVES API 608/API 6D
- STEEL BALL VALVES ISO 14313
- FIRE SAFE, API 607
- ANTI STATIC, API 608
- STEEL VALVES, ASME B16.34
- FACE TO FACE ASME B16.10
- END FLANGES, ASME B16.5
- BUTTWELDING ENDS ASME B16.25
- INSPECTION AND TEST, API 598/ API 6D

Design descriptions:

- FULL PORT DESIGN
- BG.BOLTED BONNET.SPLIT BODY
- FLOATING BALL TYPE
- BLOW-OUT PROOF STEM
- FIRE DURABLE CONSTRUCTION
- ANTI STATIC DEVICE
- STOPPER DEVICE
- ISO 5211 MOUNTING PAD
- FLANGED OR BUTTWELDING ENDS
- AVAILABLE WITH WG OPERATOR

Dimensional datas of ANSI Class 150#

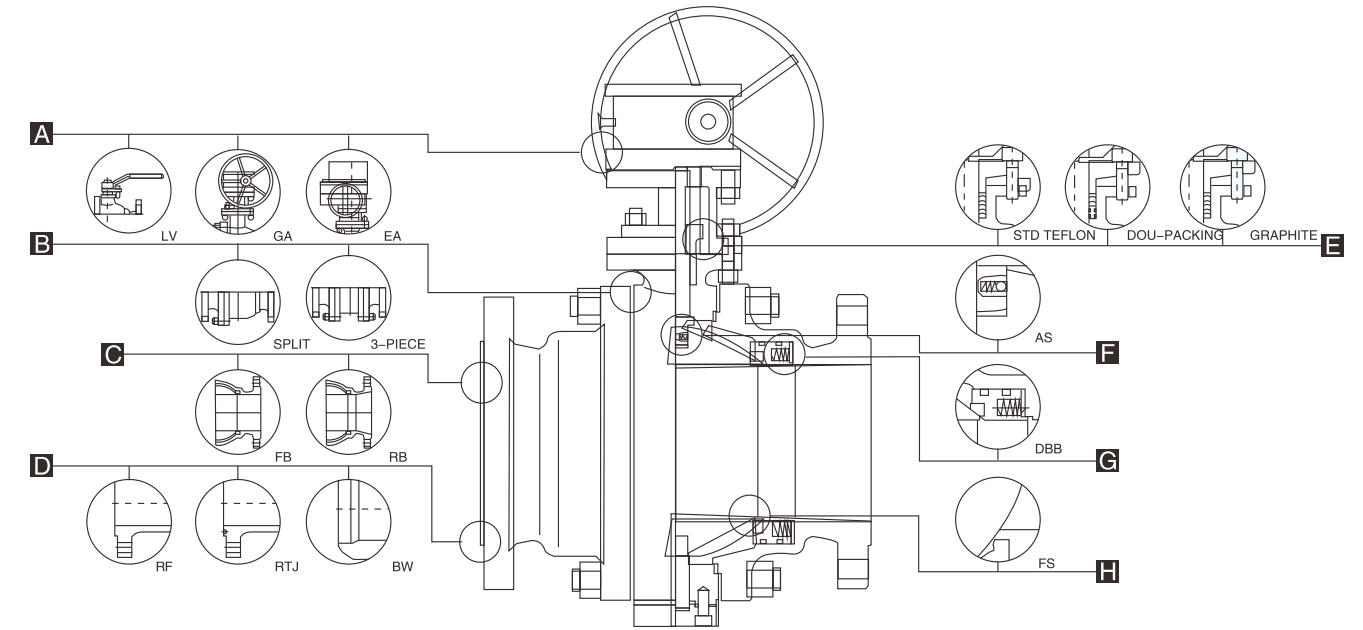
| NPS DN | 1/2 15 | 3/4 20 | 1 25 | 1 1/2 40 | 2 50 | 2 1/2 65 | 3 80 | 4 100 | 6 150 | 8 200 | 10 250 | 12 300 | in mm |
|------------|-------------|-------------|-------------|-------------|-------------|-------------|--------------|--------------|--------------|--------------|--------------|--------------|----------|
| L (RF) | 4.25 108 | 4.62 117 | 5.00 127 | 6.50 165 | 7.00 178 | 7.50 190 | 8.00 203 | 9.00 229 | 15.50 394 | 18.00 457 | 21.00 533 | 24.00 610 | in mm |
| L1 (BW) | 5.50 140 | 6.00 152 | 6.50 165 | 7.50 190 | 8.50 216 | 9.50 241 | 11.12 283 | 12.00 305 | 18.00 457 | 20.50 521 | 22.00 559 | 25.00 635 | in mm |
| H | 2.12 55 | 2.12 55 | 2.75 70 | 3.50 90 | 4.12 105 | 6.12 155 | 7.25 185 | 8.00 205 | 10.00 255 | 11.00 280 | 13.50 345 | 16.50 420 | in mm |
| W | 5 130 | 5 130 | 6 160 | 8 200 | 14 350 | 16 400 | 20 500 | 20 500 | 24 600 | 32 800 | 32 800 | 32 800 | in mm |
| wt(kg) | 2.3 1.8 | 3 2.8 | 4.5 3.7 | 7 6.2 | 9.5 8.5 | 15 14 | 19 21 | 33 35 | 93 98 | 160 170 | 200 225 | 280 295 | RF BW |

Dimensional datas of ANSI Class 300#

| NPS DN | 1/2 15 | 3/4 20 | 1 25 | 1 1/2 40 | 2 50 | 2 1/2 65 | 3 80 | 4 100 | 6 150 | 8 200 | 10 250 | 12 300 | in mm |
|------------|-------------|-------------|-------------|-------------|-------------|-------------|--------------|--------------|--------------|--------------|--------------|--------------|----------|
| L (RF) | 5.50 140 | 6.00 152 | 6.50 165 | 7.50 190 | 8.50 216 | 9.50 241 | 11.12 283 | 12.00 305 | 15.88 403 | 19.75 502 | 22.38 568 | 25.50 648 | in mm |
| L1 (BW) | 5.50 140 | 6.00 152 | 6.50 165 | 7.50 190 | 8.50 216 | 9.50 241 | 11.12 283 | 12.00 305 | 18.00 457 | 20.50 521 | 22.00 559 | 25.00 635 | in mm |
| H | 2.12 55 | 2.12 55 | 2.75 70 | 3.50 90 | 4.12 105 | 6.12 153 | 7.25 187 | 8.00 206 | 10.00 255 | 11.00 280 | 13.50 345 | 16.50 420 | in mm |
| W | 5 130 | 5 130 | 6 160 | 8 200 | 14 350 | 16 400 | 20 500 | 20 500 | 24 600 | 32 800 | 32 800 | 32 800 | in mm |
| wt(kg) | 2.5 1.8 | 3.5 2 | 5.5 3.2 | 10.5 5.5 | 14.5 8.7 | 23.5 15 | 30 18 | 55 36 | 118 85 | 200 152 | 250 182 | 330 232 | RF BW |

Dimensional datas of ANSI Class 600#

| NPS DN | 1/2 15 | 3/4 20 | 1 25 | 1 1/2 40 | 2 50 | 2 1/2 65 | 3 80 | 4 100 | 6 150 | 8 200 | 10 250 | 12 300 | in mm |
|-----------------|--------------|--------------|-------------|-------------|--------------|--------------|--------------|--------------|--------------|----------|-----------|-----------|--------------|
| L/L1 (RF/BW) | 6.50 165 | 7.50 190 | 8.50 216 | 9.50 241 | 11.50 292 | 13.00 330 | 14.00 356 | 17.00 432 | 22.00 559 | - | - | - | in mm |
| L2 (RTJ) | - | - | - | - | 11.62 295 | 13.12 333 | 14.12 359 | 17.12 435 | 22.12 562 | - | - | - | in mm |
| H | 2.38 61.5 | 2.38 61.5 | 3.00 78 | 4.00 101 | 4.75 120 | 6.88 174 | 8.38 212 | 9.25 234 | 11.38 289 | - | - | - | in mm |
| W | 5 130 | 6 160 | 8 200 | 14 350 | 16 400 | 20 500 | 24 600 | 24 600 | 32 800 | - | - | - | in mm |
| wt(kg) | 3.3 2.6 | 4.5 3.1 | 7.2 4.8 | 13.5 8 | 19 3 | 31 22 | 39 27 | 71 53 | 153 120 | - | - | - | RF/RTJ BW |



A Operation

Lever and Manual Operation
Worm and Gear Operation
Motor Electric Operation
Pneumatic Operation
Hydraulic Operation

B Body&Bonnet

Split Body&Bonnet:
One-Piece
Two-Piece
Three-Piece

C BORE

Full Bore
Reduce Bore
Full bore-
design provides
exceptional flow control.

D End Connectios

RF Flanged Ends
RTJ Flanged Ends
Butt Welding Ends
SW Ends
NPT Ends

E Packing

Multiple v-teflon packing, combined with live loading, maintains packing compression under high-cycle and severe service applications. Graphite packing is used for high temperature Situation.

F AS

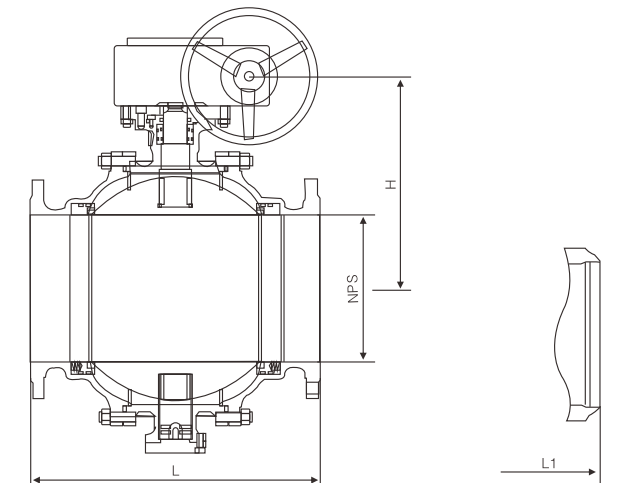
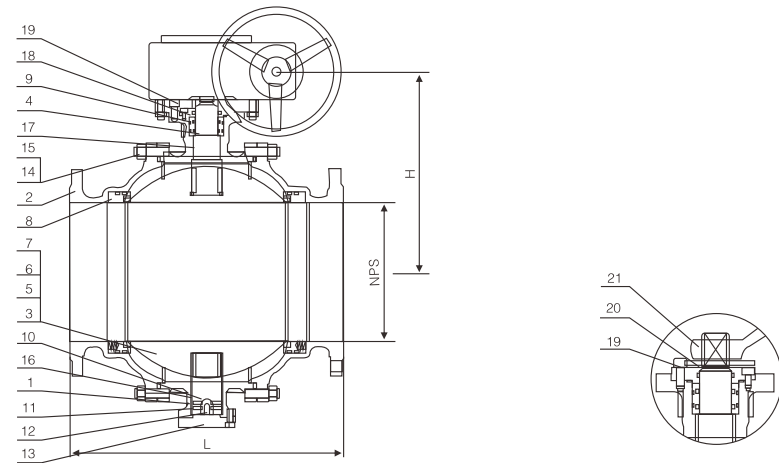
(Anti-statics)
Anti-static design feature provided in the valve prevents any accidental fire due to static electric discharge. With the low resistance short circuit path between the ball and the valve body, any static electric charge on the ball due to constant rubbing within the PTFE seat is prevented- a essential treatment of such flammable liquid as gasoline, natural liquefied gas, propane gas etc.

G DBB

Double block & bleed;
When two valve seat sealing surface of the valve is in the closed position, the valve chamber through the leakage between the sealing cover, can resist pressure from both ends of the valve.

H FS

(Fire safe designed)
Fire safe designed feature make it fire safe when valve exposed to the risk of accidental external fire by additional secondary metal sealing. Fire safe designed to API607 or BS 6755 to grant their operation suitability in case of fire.



Materials of parts

| No | Part Name | ASTM Materials | | | | | |
|----|-------------------|-------------------|-----------------|--------------|-----------------|-----------------|--|
| 1 | Body | A216-WCB | A351-CF8M | A352-LCB | A351 CN7M | A890 4A | |
| 2 | Bonnet | A216-WCB | A351-CF8M | A352-LCB | A351 CN7M | A890 4A | |
| 3 | Ball | A182-F304 | A182-F316 | A182-F304 | Alloy 20 | A182 F51 | |
| 4 | Stem | A276-304 | A276-316 | A276-304 | Alloy 20 | A182 F51 | |
| 5 | Seat | A105+ENP | A182-F316 | A350-LF2+ENP | Alloy 20 | A182 F51 | |
| 6 | Seat Insert | Glass Filled PTFE | | PTFE | PTFE | | |
| 7 | Seat Spring | A313-304 | Inconel X-750 | A313-304 | Inconel X-750 | Inconel X-750 | |
| 8 | Seat O-Ring | NBR | Viton | Viton | Viton | Viton | |
| 9 | Stem O-Ring | NBR | Viton | Viton | Viton | Viton | |
| 10 | Bonnet Gasket | Graphite+304 | Graphite+316 | Graphite+304 | 316+ Graphite | 316+ Graphite | |
| 11 | Bonnet O-Ring | NBR | Viton | Viton | Viton | Viton | |
| 12 | Antistatic Spring | A313-304 | A313-316 | A313-304 | A182 F316 | A182 F316 | |
| 13 | Lower Cover | A216-WCB | A182-F316 | A182-F304 | Alloy 20 | A182 F51 | |
| 14 | Bonnet Stud | A193-B7 | A193-B8 | A320-L7 | A193 -B8M | A193 -B8M | |
| 15 | Bonnet Stud Nut | A194-2H | A194-8 | A194-4 | A194 -8M | A194 -8M | |
| 16 | Trunnion | A276-304 | A276-316 | A276-304 | Alloy 20 | A182 F51 | |
| 17 | Trunnion Bearing | 304+PTFE | 316+PTFE | 304+PTFE | 316+PTFE | 316+PTFE | |
| 18 | Gland Flange | A216-WCB | A351-CF8M | A352-LCB | A351 CN7M | A890 4A | |
| 19 | Gland Bolt | A193-B7 | A193-B8 | A193-B7 | A193 -B8M | A193 -B8M | |
| 20 | Stop Plate | Carbon Steel | Carbon Steel+Zn | Carbon Steel | Carbon Steel+Zn | Carbon Steel+Zn | |
| 21 | Handle | Carbon Steel | | Carbon Steel | | | |

Note: 1) A105+ENP optional
2) Spiral wound construction.

Applicable standards:

- STEEL BALL VALVES API 608/API 6D
- STEEL BALL VALVES ISO 14313
- FIRE SAFE, API 607
- ANTI STATICS, API 608
- STEEL VALVES, ASME B16.34
- FACE TO FACE ASME B16.10
- END FLANGES, ASME B16.5
- BUTTWELDING ENDS ASME B16.25
- INSPECTION AND TEST, API 598/ API 6D

Design descriptions:

- FULL PORT DESIGN
- BB. BOLTED BONNET. SPLIT BODY
- THREE PIECES BODY FOR 12" & ABOVE
- TRUNNION MOUNTED BALL TYPE
- BLOW-OUT PROOF STEM
- FIRE SAFE CONSTRUCTION
- ANTI STATICS DEVICE
- STOPPER DEVICE
- ISO 5211 MOUNTING PAD
- FLANGED OR BUTTWELDING ENDS
- AVAILABLE WITH WG OPERATOR

Dimensional datas of ANSI Class 150#

| NPS DN | 2 50 | 2 1/2 65 | 3 80 | 4 100 | 6 150 | 8 200 | 10 250 | 12 300 | 14 350 | 16 400 | 18 450 | 20 500 | 24 600 | 26 650 | 28 700 | 30 750 | 32 800 | 36 900 | in mm |
|--------|------|----------|-------|-------|-------|-------|--------|--------|--------|--------|--------|--------|--------|--------|--------|--------|--------|--------|-------|
| L (RF) | 7.00 | 7.50 | 8.00 | 9.00 | 15.50 | 18.00 | 21.00 | 24.00 | 27.00 | 30.00 | 34.00 | 36.00 | 42.00 | 45.00 | 49.00 | 51.00 | 54.00 | 60.00 | in |
| L (BW) | 178 | 190 | 203 | 229 | 394 | 457 | 533 | 610 | 686 | 762 | 864 | 914 | 1067 | 1143 | 1245 | 1295 | 1372 | 1524 | mm |
| H | 8.50 | 9.50 | 11.12 | 12.00 | 18.00 | 20.50 | 22.00 | 25.00 | 30.00 | 33.00 | 36.00 | 39.00 | 45.00 | 49.00 | 53.00 | 55.00 | 60.00 | 68.00 | in |
| H (mm) | 216 | 241 | 283 | 305 | 457 | 521 | 559 | 635 | 762 | 838 | 914 | 991 | 1143 | 1245 | 1346 | 1397 | 1524 | 1727 | mm |
| W | 7.00 | 7.50 | 8.25 | 9.25 | 20.88 | 24.62 | 25.62 | 30.75 | 31.00 | 36.25 | 38.25 | 43.38 | 45.25 | 50.75 | 55.12 | 64.12 | 70.88 | 80.75 | in |
| W (mm) | 177 | 190 | 210 | 235 | 530 | 625 | 650 | 780 | 790 | 920 | 970 | 1100 | 1150 | 1290 | 1400 | 1630 | 1840 | 2050 | mm |
| wt(kg) | 14 | 16 | 20 | 20 | 24 | 24 | 24 | 24 | 32 | 32 | 32 | 32 | 32 | 32 | 32 | 32 | 32 | 32 | in |
| wt(kg) | 350 | 400 | 500 | 500 | 600 | 600 | 600 | 600 | 800 | 800 | 800 | 800 | 800 | 800 | 800 | 800 | 800 | 800 | mm |
| | 15 | 19 | 27 | 38 | 81 | 140 | 160 | 205 | 260 | 390 | 510 | 750 | 1200 | 1400 | 1860 | 2100 | 2530 | 2970 | RF |
| | 13.5 | 15.5 | 24.5 | 32.5 | 76 | 132 | 147 | 182 | 241 | 370 | 495 | 726 | 1125 | 1250 | 1640 | 1930 | 2390 | 2760 | BW |

Dimensional datas of ANSI Class 300#

| NPS DN | 2 50 | 2 1/2 65 | 3 80 | 4 100 | 6 150 | 8 200 | 10 250 | 12 300 | 14 350 | 16 400 | 18 450 | 20 500 | 24 600 | 26 650 | 28 700 | 30 750 | 32 800 | 36 900 | in mm |
|--------|------|----------|-------|-------|-------|-------|--------|--------|--------|--------|--------|--------|--------|--------|--------|--------|--------|--------|-------|
| L (RF) | 8.50 | 9.50 | 11.12 | 12.00 | 15.88 | 19.75 | 22.38 | 25.50 | 30.00 | 33.00 | 36.00 | 39.00 | 45.00 | 49.00 | 53.00 | 55.00 | 60.00 | - | in |
| L (BW) | 216 | 241 | 283 | 305 | 403 | 502 | 568 | 648 | 762 | 838 | 914 | 991 | 1143 | 1245 | 1346 | 1397 | 1524 | - | mm |
| H | 8.50 | 9.50 | 11.12 | 12.00 | 18.00 | 20.50 | 22.00 | 25.00 | 30.00 | 33.00 | 36.00 | 39.00 | 45.00 | 49.00 | 53.00 | 55.00 | 60.00 | - | in |
| H (mm) | 216 | 241 | 283 | 305 | 403 | 521 | 559 | 635 | 762 | 838 | 914 | 991 | 1143 | 1245 | 1346 | 1397 | 1524 | - | mm |
| W | 7.00 | 7.50 | 8.25 | 9.25 | 20.88 | 24.62 | 25.62 | 30.75 | 31.00 | 36.25 | 38.25 | 43.38 | 45.25 | 50.75 | 55.12 | 64.12 | 70.88 | - | in |
| W (mm) | 177 | 190 | 210 | 235 | 530 | 625 | 650 | 780 | 790 | 920 | 970 | 1100 | 1150 | 1290 | 1400 | 1630 | 1800 | - | mm |
| wt(kg) | 14 | 16 | 20 | 20 | 24 | 24 | 24 | 24 | 32 | 32 | 32 | 32 | 32 | 32 | 32 | 32 | 32 | - | in |
| wt(kg) | 350 | 400 | 500 | 500 | 600 | 600 | 600 | 600 | 800 | 800 | 800 | 800 | 800 | 800 | 800 | 800 | 800 | - | mm |
| | 19 | 24 | 34 | 48 | 101 | 175 | 200 | 255 | 325 | 485 | 635 | 935 | 1500 | 1750 | 2225 | 2450 | 2870 | - | RF |
| | 14 | 16 | 25 | 34 | 82 | 145 | 155 | 185 | 238 | 375 | 516 | 782 | 1280 | 1375 | 1825 | 2180 | 2260 | - | BW |

Dimensional datas of ANSI Class 600#

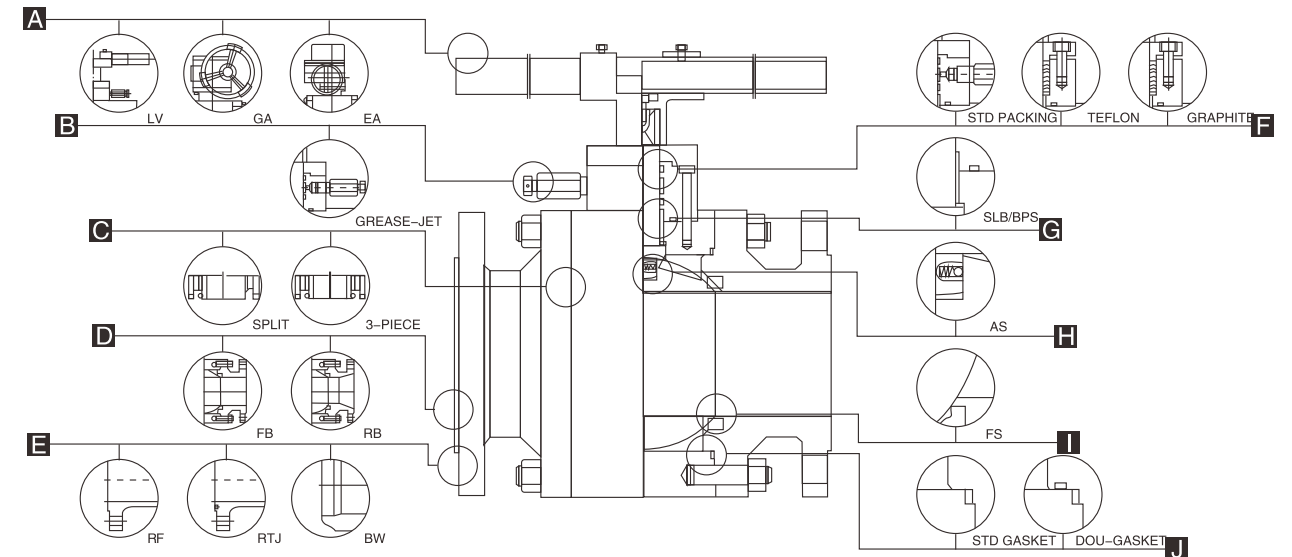
| NPS DN | 2 50 | 2½ 65 | 3 80 | 4 100 | 6 150 | 8 200 | 10 250 | 12 300 | 14 350 | 16 400 | 18 450 | 20 500 | 24 600 | 26 650 | 28 700 | in mm |
|-----------------|--------------|--------------|--------------|--------------|--------------|--------------|--------------|--------------|--------------|--------------|---------------|---------------|---------------|---------------|---------------|--------------|
| L/L1 (RF/BW) | 11.50 292 | 13.00 330 | 14.00 356 | 17.00 432 | 22.00 559 | 26.00 660 | 31.00 787 | 33.00 838 | 35.00 889 | 39.00 991 | 43.00 1092 | 47.00 1194 | 55.00 1397 | 57.00 1448 | 61.00 1549 | in mm |
| L2 (RTJ) | 11.62 295 | 13.12 333 | 14.12 359 | 17.12 435 | 22.12 562 | 26.12 664 | 31.12 791 | 33.12 841 | 35.12 892 | 39.12 994 | 43.12 1095 | 47.25 1200 | 55.38 1407 | 57.50 1461 | 61.50 1562 | in mm |
| H | 7.12 180 | 7.62 193 | 8.50 215 | 9.50 241 | 21.25 540 | 25.00 635 | 26.12 665 | 31.12 790 | 31.88 810 | 36.38 925 | 38.75 985 | 44.50 1130 | 46.62 1185 | 52.50 1335 | 57.00 1450 | in mm |
| W | 14 350 | 16 400 | 20 500 | 20 500 | 24 600 | 24 600 | 24 600 | 24 600 | 32 800 | 32 800 | 32 800 | 32 800 | 32 800 | 32 800 | 32 800 | in mm |
| wt(kg) | 26 19 | 35 25 | 58 42 | 81 51 | 142 85 | 287 200 | 540 395 | 780 610 | 1000 805 | 1300 1010 | 1700 1350 | 2100 1656 | 3400 2775 | 3800 3125 | 4500 3790 | RF/RTJ BW |

Dimensional datas of ANSI Class 900#

| NPS DN | 2 50 | 2½ 65 | 3 80 | 4 100 | 6 150 | 8 200 | 10 250 | 12 300 | 14 350 | 16 400 | 18 450 | 20 500 | 24 600 | in mm |
|-----------------|--------------|--------------|--------------|--------------|--------------|--------------|--------------|--------------|---------------|---------------|---------------|---------------|---------------|--------------|
| L/L1 (RF/BW) | 14.50 368 | 16.50 419 | 15.00 381 | 18.00 457 | 24.00 610 | 29.00 737 | 33.00 838 | 38.00 965 | 40.50 1029 | 44.50 1130 | 48.00 1219 | 52.00 1321 | 61.00 1549 | in mm |
| L2 (RTJ) | 14.62 371 | 16.62 422 | 15.12 384 | 18.12 460 | 24.12 613 | 29.12 740 | 33.12 841 | 38.12 968 | 40.88 1038 | 44.88 1140 | 48.50 1232 | 52.50 1334 | 61.75 1568 | in mm |
| H | 8.62 219 | 9.25 235 | 10.25 260 | 15.38 390 | 25.75 655 | 30.25 770 | 31.75 805 | 38.00 965 | 38.50 980 | 45.00 1145 | 47.00 1195 | 53.50 1360 | 56.00 1425 | in mm |
| W | 20 500 | 20 500 | 20 500 | 24 600 | 24 600 | 24 600 | 24 600 | 32 800 | 32 800 | 32 800 | 32 800 | 32 800 | 32 800 | in mm |
| wt(kg) | 31 23 | 43 31 | 68 51 | 98 61 | 171 102 | 345 240 | 650 480 | 940 735 | 1205 965 | 1565 1215 | 2050 1625 | 2535 1995 | 3950 3335 | RF/RTJ BW |

Dimensional datas

| NPS | DN | L/L1 (RF/BW) | L2 (RTJ) | H | W | WT(kg) | L/L1 (RF/BW) | L2 (RTJ) | H | W | WT(kg) | |
|-----|-----|-----------------|-------------|-------|------|------------------------|-----------------|-------------|-----|------|--------|--|
| | | | | | | ANSI Class1500# | | | | | | |
| | | | | | | ANSI Class2500# | | | | | | |
| 2 | 50 | 14.50 | 368 | 14.62 | 371 | 11.25 | 285 | 20 | 500 | 49 | 33 | |
| 2½ | 65 | 16.50 | 419 | 16.62 | 422 | 12.00 | 305 | 20 | 500 | 67 | 44 | |
| 3 | 80 | 18.50 | 470 | 18.62 | 473 | 13.25 | 338 | 24 | 600 | 106 | 73 | |
| 4 | 100 | 21.50 | 546 | 21.62 | 549 | 20.00 | 506 | 24 | 600 | 153 | 87 | |
| 6 | 150 | 27.75 | 705 | 28.00 | 711 | 33.50 | 852 | 24 | 600 | 268 | 145 | |
| 8 | 200 | 32.75 | 832 | 33.12 | 841 | 39.38 | 1000 | 32 | 800 | 540 | 345 | |
| 10 | 250 | 39.00 | 991 | 39.38 | 1000 | 41.12 | 1045 | 32 | 800 | 1020 | 685 | |
| 12 | 300 | 44.50 | 1130 | 45.12 | 1146 | 49.38 | 1255 | 32 | 800 | 1475 | 1050 | |
| 14 | 350 | 49.50 | 1257 | 20.25 | 1276 | 50.00 | 1270 | 32 | 800 | 1885 | 1385 | |
| 16 | 400 | 54.50 | 1384 | 44.38 | 1407 | 58.50 | 1485 | 32 | 800 | 2455 | 1735 | |
| in | mm | in | mm | in | mm | in | mm | in | mm | in | mm | |
| | | | | | | | | | | | | |



A Operation

Lever and Manual Operation
Worm and Gear Operation
Motor Electric Operation
Pneumatic Operation
Hydraulic Operation

B Grease-jet joint

Grease-jet joint is installed in the specified part and aims to meet with general situations and easily achieve to seal in spot with maintenance.

C Body & Bonnet

Split Body & Bonnet:
One-Piece
Two-Piece
Three-Piece

D Bore

Full Bore
Reduce Bore
Full bore-design provides exceptional flow control.

E End Connections

RF Flanged Ends
RTJ Flanged Ends
Butt Welding Ends
SW Ends
NPT Ends

F Packing

Multiple v-teflon packing, combined with live loading, maintains packing compression under high-cycle and severe service applications. Graphite packing is used for high temperature Situation.

G SLB

Self-lubrication bearing highly performs the function of easy operation, low torque and longer life.

BPS

(Blow-out proof stem)
A pressure-safe stem shoulder is designed to protect against failure under excess pressure.

H AS

(Anti-statics)
Anti-static design feature provided in the valve prevents any accidental fire due to static electric discharge. With the low resistance short circuit path between the ball and the valve body, any static electric charge on the ball due to constant rubbing with in the PTFE seat is prevented - a essential treatment of such flammable liquid as gasoline, natural liquefied gas, propane gas etc.

I FS

(Fire safe designed)
Fire safe designed feature make it fire safe when valve exposed to the risk of accidental external fire by additional secondary metal sealing. Fire safe designed to API607 or BS 6755 to grant their operation suitability in case of fire.

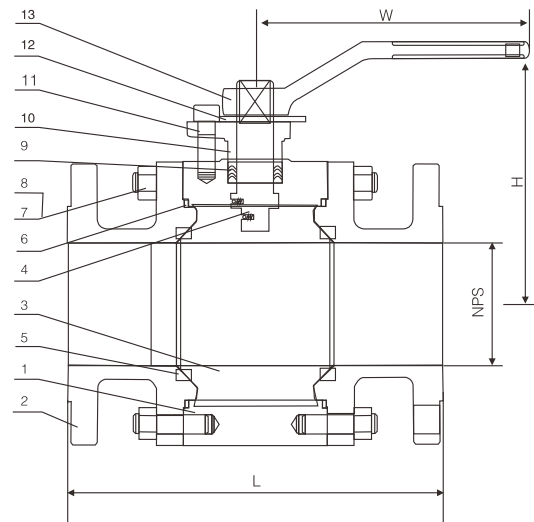
J Gasket

Standard gasket or dou-gasket.
Std gasket adopts rubber seal ring with high performance
Dou-gasket adopts rubber seal ring and spiral wound graphite to better enhance sealing performance.

Note: 1) A105+ENP optional
2) Spiral wound construction.

Materials of parts

| No | Part Name | ASTM Materials | | |
|----|-----------------|----------------|-----------------|--------------|
| 1 | Body | A105 | A182-F316 | A350-LF2 |
| 2 | Bonnet | A105 | A182-F316 | A350-LF2 |
| 3 | Ball | A182-F304 | A182-F316 | A182-F304 |
| 4 | Stem | A276-304 | A276-316 | A276-304 |
| 5 | Seat Ring | R.PTFE | | |
| 6 | Bonnet Gasket | Graphite+304 | PTFE | Graphite+304 |
| 7 | Bonnet Stud | A193-B7 | A193-B8 | A320-L7 |
| 8 | Bonnet Stud Nut | A194-2H | A194-8 | A194-4 |
| 9 | Packing | PTFE | | |
| 10 | Gland Flange | A105 | A182-F316 | A350-LF2 |
| 11 | Gland Bolt | A193-B7 | A193-B8 | A193-B7 |
| 12 | Stop Plate | Carbon Steel | Carbon Steel+Zn | Carbon Steel |
| 13 | Handle | Carbon Steel | | |



Dimensional datas of ANSI Class 150#

| NPS DN | 1/2 15 | 3/4 20 | 1 25 | 1 1/2 40 | 2 50 | 2 1/2 65 | 3 80 | 4 100 | 6 150 | 8 200 | 10 250 | 12 300 | in mm |
|---------|-------------|-------------|-------------|-------------|--------------|-------------|--------------|--------------|--------------|--------------|--------------|--------------|----------|
| L (RF) | 4.25 108 | 4.62 117 | 5.00 127 | 6.50 165 | 7.00 178 | 7.50 190 | 8.00 203 | 9.00 229 | 15.50 394 | 18.00 457 | 21.00 533 | 24.00 610 | in mm |
| L1 (BW) | 5.50 140 | 6.00 152 | 6.50 165 | 7.50 190 | 8.50 216 | 9.50 241 | 11.12 283 | 12.00 305 | 18.00 457 | 20.50 521 | 22.00 559 | 25.00 635 | in mm |
| H | 2.12 55 | 2.12 55 | 2.50 65 | 3.38 85 | 4.00 100 | 6.00 150 | 7.00 180 | 9.25 235 | 9.88 250 | 11.00 280 | 12.62 320 | 15.38 390 | in mm |
| W | 8 200 | 8 200 | 12 300 | 12 300 | 166 400 | 16 400 | 24 600 | 24 600 | 24 600 | 24 600 | 32 800 | 32 800 | in mm |
| wt(kg) | 3.1 2.6 | 4.1 3.9 | 6 5.2 | 9.5 8.7 | 12.8 11.8 | 20 19 | 26 28 | 45 47 | 126 131 | 216 226 | 270 295 | 378 393 | RF BW |

Dimensional datas of ANSI Class 300#

| NPS DN | 1/2 15 | 3/4 20 | 1 25 | 1 1/2 40 | 2 50 | 2 1/2 65 | 3 80 | 4 100 | 6 150 | 8 200 | 10 250 | 12 300 | in mm |
|---------|-------------|-------------|-------------|-------------|-------------|-------------|--------------|--------------|--------------|--------------|--------------|--------------|----------|
| L (RF) | 5.50 140 | 6.00 152 | 6.50 165 | 7.50 190 | 8.50 216 | 9.50 241 | 11.12 283 | 12.00 305 | 15.88 403 | 19.75 502 | 22.38 568 | 25.50 648 | in mm |
| L1 (BW) | 5.50 140 | 6.00 152 | 6.50 165 | 7.50 190 | 8.50 216 | 9.50 241 | 11.12 283 | 12.00 305 | 18.00 457 | 20.50 521 | 22.00 559 | 25.00 635 | in mm |
| H | 2.12 55 | 2.12 55 | 2.50 65 | 3.38 85 | 4.00 100 | 6.00 150 | 7.00 180 | 9.25 235 | 9.88 250 | 11.00 280 | 12.62 320 | 15.38 390 | in mm |
| W | 8 200 | 8 200 | 12 300 | 12 300 | 10 250 | 12 300 | 14 350 | 19 480 | 24 600 | 24 600 | 32 800 | 32 800 | in mm |
| wt(kg) | 3.5 2.8 | 4.6 3.1 | 6.7 4.4 | 10.5 5.5 | 14.5 8.7 | 22 13.5 | 29 17 | 50 31 | 141 108 | 242 194 | 302 234 | 423 325 | RF BW |

Dimensional datas of ANSI Class 600#

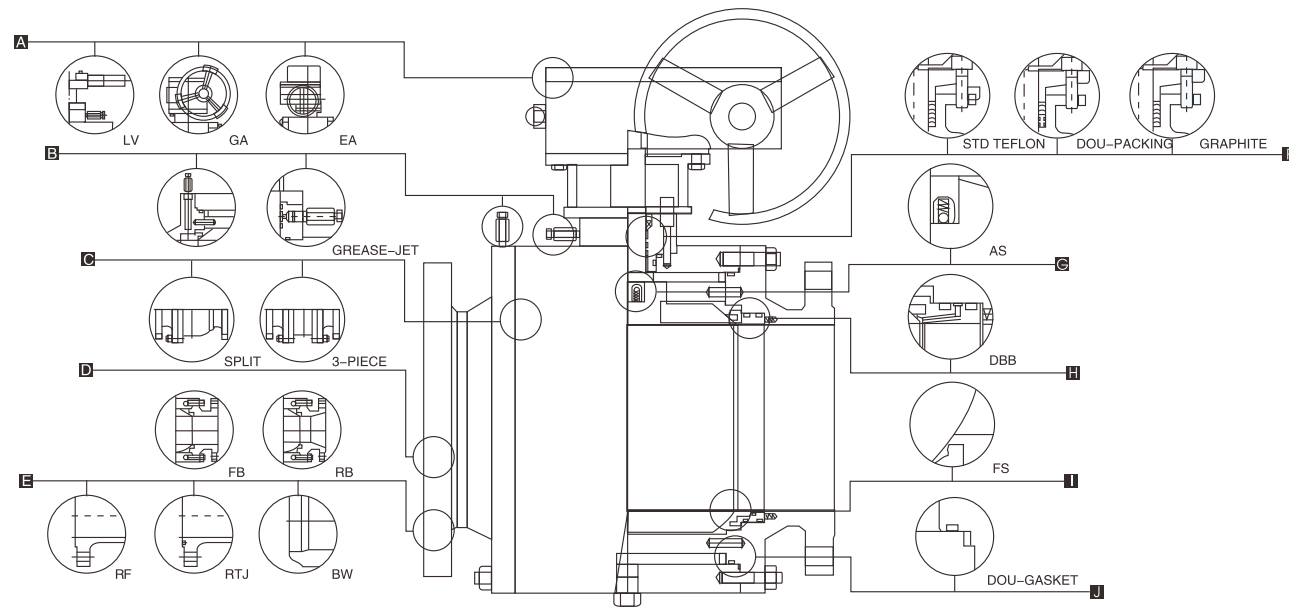
| NPS DN | 1/2 15 | 3/4 20 | 1 25 | 1 1/2 40 | 2 50 | 2 1/2 65 | 3 80 | 4 100 | 6 150 | 8 200 | 10 250 | 12 300 | in mm |
|--------------|-------------|-------------|-------------|-------------|--------------|--------------|--------------|--------------|--------------|----------|-----------|-----------|----------|
| L/L1 (RF/BW) | 6.50 165 | 7.50 190 | 8.50 216 | 9.50 241 | 11.50 292 | 13.00 330 | 14.00 356 | 17.00 432 | 22.00 559 | - | - | - | in mm |
| L2 (RTJ) | - | - | - | - | 11.62 295 | 13.12 333 | 14.12 359 | 17.12 435 | 22.12 562 | - | - | - | in mm |
| H | 2.25 58 | 2.25 58 | 2.62 68 | 3.50 89 | 4.12 105 | 6.25 158 | 7.50 190 | 9.75 247 | 10.38 262 | - | - | - | in mm |
| W | 8 200 | 12 300 | 12 300 | 16 400 | 16 400 | 24 600 | 24 600 | 24 600 | 32 800 | - | - | - | in mm |
| wt(kg) | 4.5 3.8 | 5.5 4.1 | 8 5.6 | 12.5 7 | 18 12 | 27 18 | 35 23 | 61 43 | 172 139 | - | - | - | RF BW |

Applicable standards:

- STEEL BALL VALVES API 608/API 6D
- STEEL BALL VALVES ISO 14313
- FIRE SAFE, API 607
- ANTI STATICS, API 608
- STEEL VALVES, ASME B16.34
- FACE TO FACE ASME B16.10
- END FLANGES, ASME B16.5
- BUTTWELDING ENDS ASME B16.25
- INSPECTION AND TEST, API 598/ API 6D

Design descriptions:

- FULL PORT DESIGN
- BB.BOLTED BONNET.SPLIT BODY
- FLOATING BALL TYPE
- BLOW-OUT PROOF STEM
- FIRE SAFE CONSTRUCTION
- ANTI STATICS DEVICE
- STOPPER DEVICE
- ISO 5211 MOUNTING PAD
- FLANGED OR BUTTWELDING ENDS
- AVAILABLE WITH WG OPERATOR



A Operation

Lever and Manual Operation
Worm and Gear Operation
Motor Electric Operation
Pneumatic Operation
Hydraulic Operation

B Grease-jet joint

Grease-jet joint is installed in the specified part and aims to meet with general situations and easily achieve to seal in spot with maintenance.

C Body&Bonnet

Split Body&Bonnet:
One-Piece
Two-Piece
Three-Piece

D BORE

Full Bore
Reduce Bore
Full bore-design provides exceptional flow control.

E End Connectios

RF Flange Ends
RTJ Flange Ends
Butt Welding Ends
SW Ends
NPT Ends

F Packing

Multiple v-teflon packing, combined with live loading, maintains packing compression under high-cycle and severe service applications. Graphite packing is used for high temperature Situation.

G AS

(Anti-statics)
Anti-static design feature provided in the valve prevents any accidental fire due to static electric discharge. With the low resistance short circuit path between the ball and the valve body, any static electric charge on the ball due to constant rubbing within the PTFE seat is prevented- a essential treatment of such flammable liquid as gasoline, natural liquefied gas, propane gas etc.

H DBB

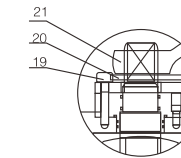
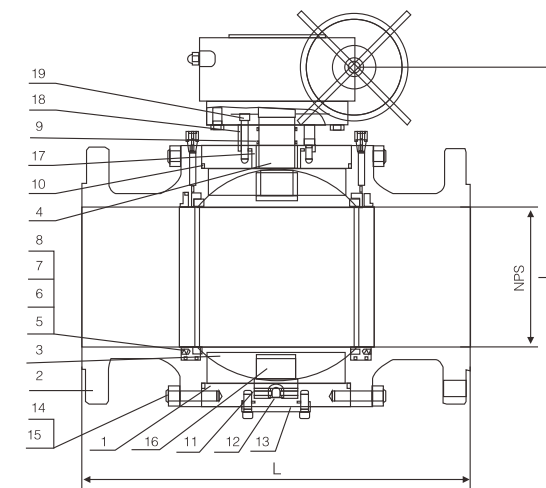
Double block&bleed.
The body cavity is isolated when the ball is in either fully closed or fully opened position, the medium entrapped in it can easily be bled to avoid over pressure.

I FS

(Fire safe designed)
Fire safe designed feature make it fire safe when valve exposed to the risk of accidental external fire by additional secondary metal sealing. Fire safe designed to API607 or BS 6755 to grant their operation suitability in case of fire.

J Gasket

Dou-gasket adopts high-performance rubber seal ring and spiral wound graphite to better enhance sealing performance.



Materials of parts

| No | Part Name | ASTM Materials | | |
|----|-------------------|-------------------|-----------------|--------------|
| 1 | Body | A105 | A182-F316 | A350-LF2 |
| 2 | Bonnet | A105 | A182-F316 | A350-LF2 |
| 3 | Ball | A182-F304 | A182-F316 | A182-F304 |
| 4 | Stem | A276-304 | A276-316 | A276-304 |
| 5 | Seat | A105+ENP | A182-F316 | A350-LF2+ENP |
| 6 | Seat Insert | Glass Filled PTFE | | |
| 7 | Seat Spring | A313-304 | Inconel X-750 | A313-304 |
| 8 | Seat O-Ring | NBR | Viton | Viton |
| 9 | Stem O-Ring | NBR | Viton | Viton |
| 10 | Bonnet Gasket | Graphite+304 | Graphite+316 | Graphite+304 |
| 11 | Bonnet O-ring | NBR | Viton | Viton |
| 12 | Antistatic Spring | A313-304 | A313-316 | A313-304 |
| 13 | Lower Cover | A182-F304 | A182-F316 | A182-F304 |
| 14 | Bonnet Stud | A193-B7 | A193-B8 | A320-L7 |
| 15 | Bonnet Stud Nut | A194-2H | A194-8 | A194-4 |
| 16 | Trunnion | A276-304 | A276-316 | A276-304 |
| 17 | Trunnion Bearing | 304+PTFE | 316+PTFE | 304+PTFE |
| 18 | Gland | A105 | A182-F316 | A350-LF2 |
| 19 | Gland Bolt | A193-B7 | A193-B8 | A193-B7 |
| 20 | Stop Plate | Carbon Steel | Carbon Steel+Zn | Carbon Steel |
| 21 | Handle | Carbon Steel | | |

Note: 1)A105+ENP optional
2)Spiral wound construction.

Applicable standards:

- STEEL BALL VALVES API 608/API 6D
- STEEL BALL VALVES ISO 14313
- FIRE SAFE, API 607
- ANTI STATICS, API 608
- STEEL VALVES, ASME B16.34
- FACE TO FACE ASME B16.10
- END FLANGES, ASME B16.5
- BUTTWELDING ENDS ASME B16.25
- INSPECTION AND TEST, API 598/ API 6D

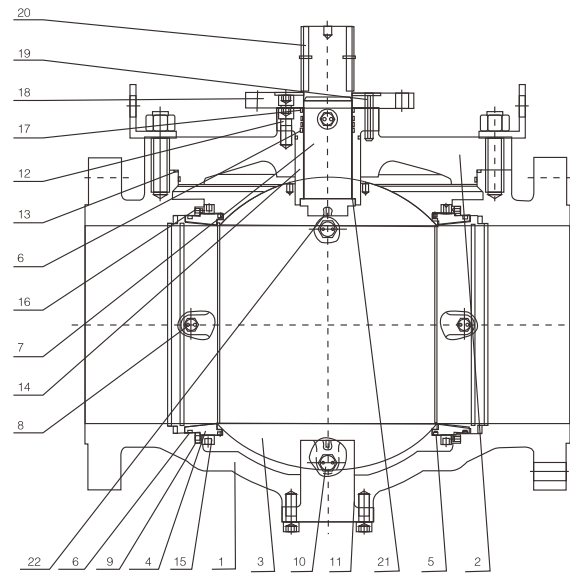
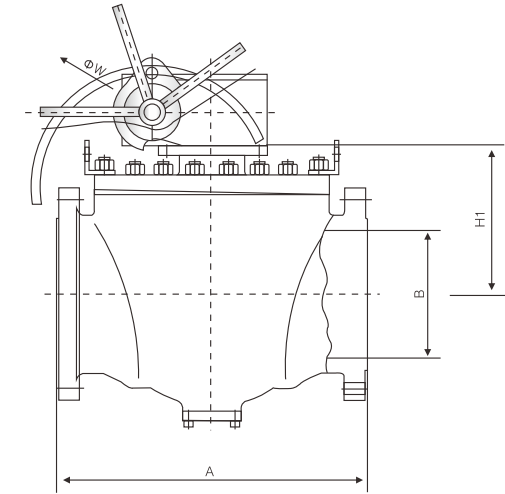
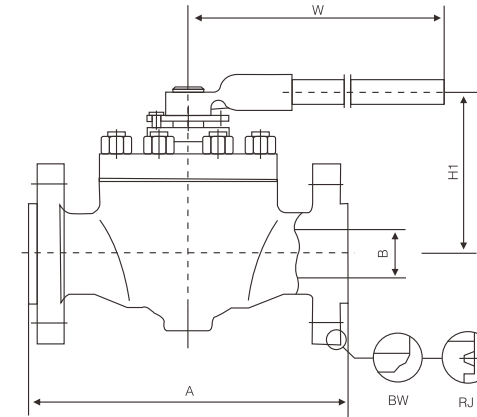
Design descriptions:

- FULL PORT DESIGN
- BB.BOLTED BONNET.SPLIT BODY
- THREE PIECES BODY FOR 12" & ABOVE
- TRUNNION MOUNTED BALL TYPE
- BLOW-OUT PROOF STEM
- FIRE SAFE CONSTRUCTION
- ANTI STATICS DEVICE
- STOPPER DEVICE
- ISO 5211 MOUNTING PAD
- FLANGED OR BUTTWELDING ENDS
- AVAILABLE WITH WG OPERATOR



Materials of parts

| | |
|----------------------|--|
| Body | WCB/LCB/CF8M/CF8/CF3M/CF3/WC6/WC9/CD3MN |
| Lid | WCB/LCB/CF8M/CF8/CF3M/CF3/WC6/WC9/CD3MN |
| Ball | A105+ENP/LF2+ENP/F304/F316/F304L/F316L/F51 |
| Seat | A105+ENP/LF2+ENP/F304/F316/F304L/F316L/F51 |
| Stem | A105+ENP/LF2+ENP/F304/F316/F304L/F316L/F51 |
| Seat ring | PTFE/MYLON/PEEK/TEFLON |
| O-ring | VITON/NBR |
| Bolt | B7M/B8M/L7M/B16M |
| Support cover | A105+ENP/LF2+ENP/F304/F316/F304L/F316L/F51 |
| Spring | 17-4PH/17-7PH/Inconel |
| Bearing | 304+PTFE/316+PTFE |
| Gasket | Flexible graphite+PTFE |



| No | Part Name | No | Part Name |
|----|-----------------------------|----|-------------------------|
| 1 | Body | 12 | Screw |
| 2 | Lid | 13 | Body gasket |
| 3 | Ball | 14 | Support cover |
| 4 | Seat | 15 | Seat retainer ring |
| 5 | Sealing ring | 16 | Spring support cover |
| 6 | O-ring | 17 | Packing |
| 7 | Stem | 18 | Connected disk |
| 8 | Seat grease injection valve | 19 | Elastic cylindrical pin |
| 9 | Spring | 20 | Flat key |
| 10 | Blow-down valve | 21 | Stem gasket |
| 11 | Ball lubricating bearing | 22 | Antistatic spring |

Materials could be chosen according to customers' requirement & working condition.

Features and Application:

This product is a new type top entry combination ball valve, the seat can be installed and move around the body. Through the thread, the outer margin of the seat connected to the retainer ring. There is spring on the support cover, which installed on the valve body, and the retainer ring can compress spring. The fabrication holes are on the outer margin of the seat and the retainer ring. This new type product adopts total body design, the compensation can be automatically, the possibility of leakage is small, safety in use, vibrate resistance, and double seal. The ball is installed from the top part, so can finish the maintenance without removing the pipe, it is very convenient.

Dimensional datas

| NPS inch | DN | A mm | B mm | H1 mm | W mm | WT kg | T N.m | NPS inch | DN | A mm | B mm | H1 mm | W mm | WT kg | T N.m |
|------------------------|-----|---------|---------|----------|---------|----------|----------|-------------|-----|---------|---------|----------|---------|----------|----------|
| ANSI Class 150# | | | | | | | | | | | | | | | |
| 2 | 50 | 292 | 51 | 207 | 300 | 30 | 50 | ★14 | 350 | 889 | 334 | 455 | 600 | 760 | 2426 |
| 3 | 80 | 356 | 76 | 223 | 400 | 57 | 65 | ★16 | 400 | 991 | 385 | 460 | 600 | 1100 | 3016 |
| 4 | 100 | 432 | 100 | 280 | 450 | 100 | 151 | ★18 | 450 | 1092 | 436 | 503 | 600 | 1512 | 4574 |
| ★6 | 150 | 559 | 150 | 275 | 460 | 215 | 320 | ★20 | 500 | 1194 | 487 | 560 | 700 | 1930 | 6016 |
| ★8 | 200 | 660 | 201 | 321 | 460 | 407 | 1020 | ★24 | 600 | 1397 | 589 | 610 | 700 | 3200 | 9750 |
| ★10 | 250 | 787 | 252 | 355 | 600 | 560 | 1085 | ★28 | 700 | 1549 | 684 | 730 | 700 | 4600 | 14540 |
| ★12 | 300 | 838 | 303 | 470 | 600 | 710 | 1562 | ★30 | 750 | 1651 | 735 | 800 | 760 | 5630 | 18005 |

Dimensional datas

| NPS inch | DN | A mm | B mm | H1 mm | W mm | WT kg | T N.m | NPS inch | DN | A mm | B mm | H1 mm | W mm | WT kg | T N.m |
|------------------------|-----|---------|---------|----------|---------|----------|----------|-------------|-----|---------|---------|----------|---------|----------|----------|
| ANSI Class 300# | | | | | | | | | | | | | | | |
| 2 | 50 | 292 | 51 | 211 | 300 | 36 | 86 | ★14 | 350 | 889 | 334 | 460 | 600 | 766 | 3800 |
| 3 | 80 | 356 | 76 | 226 | 500 | 63 | 110 | ★16 | 400 | 991 | 385 | 480 | 600 | 1106 | 5376 |
| 4 | 100 | 432 | 100 | 286 | 550 | 106 | 270 | ★18 | 450 | 1092 | 436 | 508 | 600 | 1519 | 8000 |
| ★6 | 150 | 559 | 150 | 282 | 460 | 221 | 500 | ★20 | 500 | 1194 | 487 | 565 | 600 | 2010 | 10610 |
| ★8 | 200 | 660 | 201 | 325 | 460 | 412 | 1620 | ★24 | 600 | 1397 | 589 | 617 | 760 | 3208 | 17280 |
| ★10 | 250 | 787 | 252 | 360 | 600 | 566 | 1824 | ★28 | 700 | 1549 | 684 | 678 | 760 | 4607 | 25102 |
| ★12 | 300 | 838 | 303 | 420 | 600 | 715 | 2632 | ★30 | 750 | 1651 | 735 | 738 | 760 | 5638 | 31664 |

Note: ★ Turbine drives

Dimensional datas

| NPS inch | DN | A mm | B mm | H1 mm | W mm | WT kg | T N.m | NPS inch | DN | A mm | B mm | H1 mm | W mm | WT kg | T N.m |
|------------------------|-----|------|------|-------|------|-------|-------|----------|-----|------|------|-------|------|-------|-------|
| ANSI Class 600# | | | | | | | | | | | | | | | |
| 2 | 50 | 292 | 51 | 215 | 500 | 41 | 148 | ★14 | 350 | 889 | 334 | 465 | 700 | 770 | 7255 |
| 3 | 80 | 356 | 76 | 232 | 600 | 67 | 200 | ★16 | 400 | 991 | 385 | 470 | 700 | 1112 | 9174 |
| 4 | 100 | 432 | 100 | 294 | 600 | 110 | 460 | ★18 | 450 | 1092 | 436 | 512 | 760 | 1523 | 13520 |
| ★6 | 150 | 559 | 150 | 287 | 600 | 226 | 908 | ★20 | 500 | 1194 | 487 | 570 | 760 | 1940 | 18034 |
| ★8 | 200 | 660 | 201 | 324 | 600 | 417 | 2560 | ★24 | 600 | 1397 | 589 | 622 | 760 | 3213 | 29512 |
| ★10 | 250 | 787 | 252 | 365 | 600 | 570 | 3048 | ★28 | 700 | 1549 | 684 | 742 | 760 | 4612 | 42264 |
| ★12 | 300 | 838 | 303 | 480 | 700 | 720 | 4300 | ★30 | 750 | 1651 | 735 | 817 | 850 | 5640 | 58864 |

Dimensional datas

| NPS inch | DN | A mm | B mm | H1 mm | W mm | WT kg | T N.m | NPS inch | DN | A mm | B mm | H1 mm | W mm | WT kg | T N.m |
|------------------------|-----|------|------|-------|------|-------|-------|----------|-----|------|------|-------|------|-------|-------|
| ANSI Class 900# | | | | | | | | | | | | | | | |
| 2 | 50 | 368 | 49 | 212 | 650 | 52 | 208 | ★12 | 300 | 965 | 303 | 507 | 700 | 1300 | 6000 |
| 3 | 80 | 381 | 74 | 227 | 700 | 110 | 280 | ★14 | 350 | 1029 | 322 | 520 | 700 | 1695 | 10220 |
| 4 | 100 | 457 | 100 | 277 | 800 | 200 | 650 | ★16 | 400 | 1130 | 373 | 538 | 760 | 2560 | 12968 |
| ★6 | 150 | 610 | 150 | 283 | 600 | 430 | 1298 | ★18 | 450 | 1219 | 423 | 580 | 760 | 3400 | 19054 |
| ★8 | 200 | 737 | 201 | 334 | 600 | 800 | 3596 | ★20 | 500 | 1321 | 471 | 625 | 760 | 4400 | 25452 |
| ★10 | 250 | 838 | 252 | 380 | 600 | 1000 | 4306 | ★24 | 600 | 1549 | 589 | 690 | 850 | 7200 | 38655 |

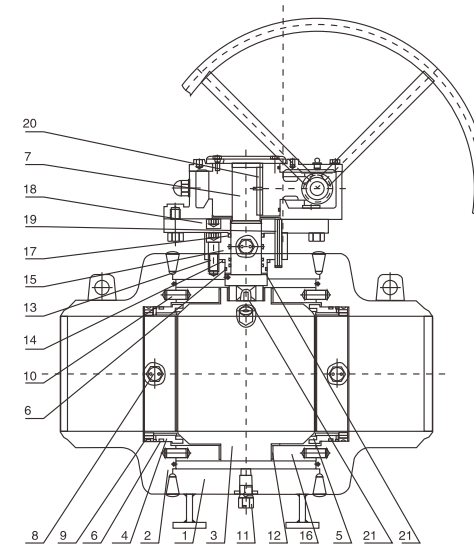
Dimensional datas

| NPS inch | DN | A mm | B mm | H1 mm | W mm | WT kg | T N.m | NPS inch | DN | A mm | B mm | H1 mm | W mm | WT kg | T N.m |
|-------------------------|-----|------|------|-------|------|-------|-------|----------|-----|------|------|-------|------|-------|-------|
| ANSI Class 1500# | | | | | | | | | | | | | | | |
| 2 | 50 | 368 | 49 | 212 | 600 | 56 | 330 | ★10 | 250 | 991 | 239 | 398 | 700 | 1438 | 6720 |
| 3 | 80 | 470 | 74 | 236 | 930 | 153 | 440 | ★12 | 300 | 1130 | 287 | 520 | 700 | 2017 | 14520 |
| 4 | 100 | 546 | 100 | 295 | 460 | 278 | 1034 | ★14 | 350 | 1257 | 315 | 560 | 760 | 2612 | 32600 |
| ★6 | 150 | 705 | 144 | 303 | 600 | 600 | 2084 | ★16 | 400 | 1384 | 360 | 570 | 760 | 3890 | 49650 |
| ★8 | 200 | 832 | 192 | 354 | 600 | 1100 | 5496 | ★18 | 450 | 1477 | 405 | 592 | 760 | 5100 | 66350 |

Note: ★ Turbine drives

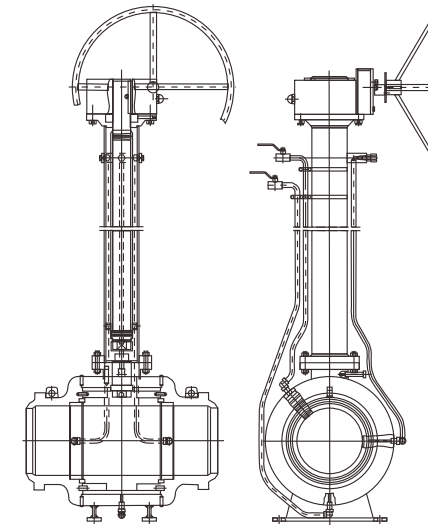
Applicable Standards:

- DESIGN & MANUFACTURE : API 6D/ISO 14313、ASME B16.34
- CONNECTION DIMENSION : ASME B16.5、DN EN 1092
- FIRE RESISTANCE DESIGN : API 607/ISO 10497
- INSPECTION & TEST : API 6D、ISO 5208、API 598
- MATERIAL : ISO 15156



Materials of parts

| No | Part Name | No | Part Name |
|----|-----------------------------|----|--------------------------|
| 1 | Body | 12 | Ball lubricating bearing |
| 2 | Left-right body | 13 | Screw |
| 3 | Ball | 14 | Bonnet gasket |
| 4 | Seat | 15 | Support cover |
| 5 | Sealing ring | 16 | Die holder |
| 6 | O-ring | 17 | Packing |
| 7 | Stem | 18 | Terminal pad |
| 8 | Seat grease injection valve | 19 | Spring pin |
| 9 | Spring | 20 | Flat key |
| 10 | straight pin | 21 | Stem gasket |
| 11 | Blow-down valve | 22 | Static-free spring |



Ground extended product structure diagram

Materials of parts

| | |
|----------------------|--|
| Body | A105/LF2/F304/F316/F304L/F316L/F11/F22/F51 |
| Ball | A105+ENP/LF2+ENP/F304/F316/F304L/F316L/F51 |
| Seat | A105+ENP/LF2+ENP/F304/F316/F304L/F316L/F51 |
| Stem | A105+ENP/LF2+ENP/F304/F316/F304L/F316L/F51 |
| Sealing ring | PTFE/NYLON/PEEK/TEFLON |
| O-ring | VITON/NBR |
| Screw | B7M/B8M/L7M/B16M |
| Support cover | A105+ENP/LF2+ENP/F304/F316/F304L/F316L/F51 |
| Die holder | A105+ENP/LF2+ENP/F304/F316/F304L/F316L/F51 |
| Spring | 17-4PH/17-7PH/Inconel |
| Bearing | 304+PTFE/316+PTFE |
| Gasket | Flexible graphite+304/PTFE |

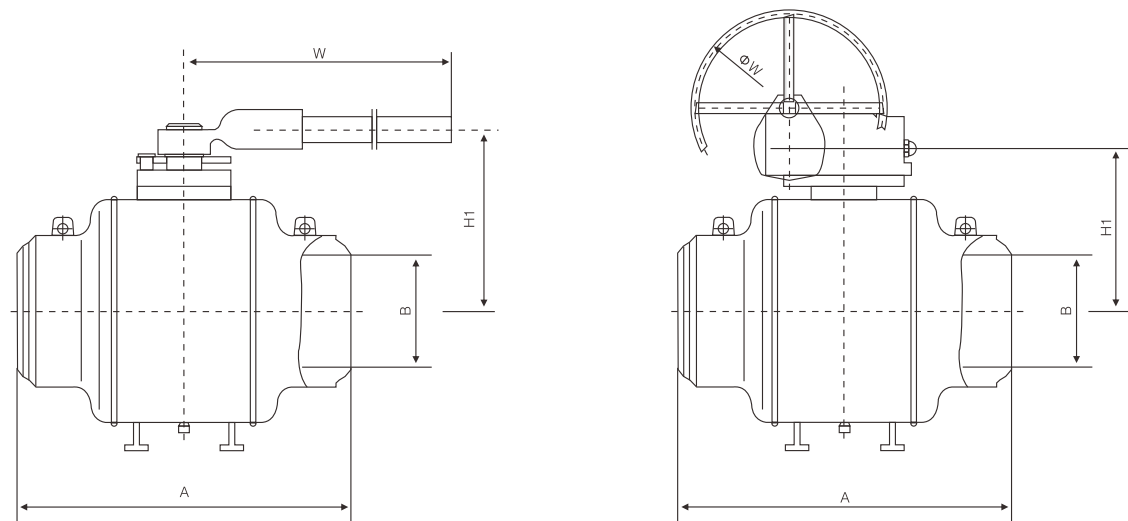
Materials could be chosen according to customers' requirement & working condition.

Applicable Standards:

- DESIGN & MANUFACTURE CONFORM WITH : API 6D/ ISO 14313、ASME B16.34
- CONNECTION DIMENSION CONFORMS WITH : ASME B16.25、DIN EN 12627
- FIRE RESISTANCE DESIGN CONFORMS WITH : API 607/ISO 10497
- INSPECTION & TEST CONFORMS WITH : API 6D、ISO 5208、API 598
- MATERIAL CONFORMS WITH : ISO 15156

Full Welded Trunnion Mounted Ball Valve 150# 300#

Full Welded Trunnion Mounted Ball Valve 600# 900# 1500#



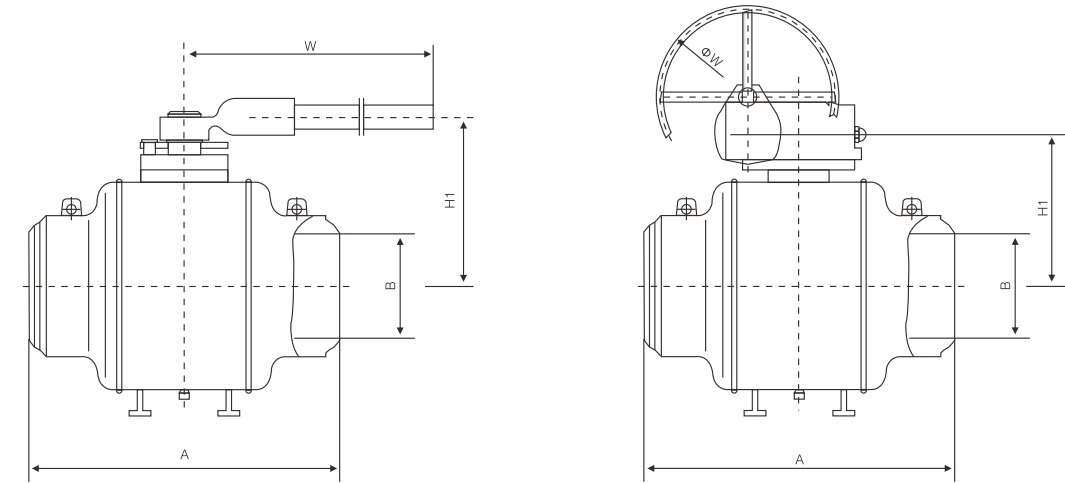
Dimensional datas

| NPS inch | DN | A mm | B mm | H1 mm | W mm | WT kg | T N.m | NPS inch | DN | A mm | B mm | H1 mm | W mm | WT kg | T N.m |
|------------------------|-----|---------|---------|----------|---------|----------|----------|-------------|-----|---------|---------|----------|---------|----------|----------|
| ANSI Class 150# | | | | | | | | | | | | | | | |
| 2 | 50 | 216 | 51 | 146 | 300 | 12 | 50 | ★14 | 350 | 762 | 334 | 410 | 600 | 860 | 2426 |
| 3 | 80 | 283 | 76 | 170 | 400 | 28 | 65 | ★16 | 400 | 838 | 385 | 460 | 600 | 980 | 3016 |
| 4 | 100 | 305 | 100 | 204 | 450 | 42 | 151 | ★18 | 450 | 914 | 436 | 520 | 600 | 1210 | 4574 |
| ★6 | 150 | 457 | 150 | 260 | 460 | 125 | 320 | ★20 | 500 | 991 | 487 | 560 | 700 | 1760 | 6016 |
| ★8 | 200 | 521 | 201 | 300 | 460 | 220 | 1020 | ★24 | 600 | 1143 | 589 | 600 | 700 | 2010 | 9750 |
| ★10 | 250 | 559 | 252 | 340 | 600 | 340 | 1085 | ★28 | 700 | 1346 | 684 | 730 | 700 | 3200 | 14540 |
| ★12 | 300 | 635 | 303 | 385 | 600 | 520 | 1562 | ★30 | 750 | 1397 | 735 | 840 | 760 | 4120 | 18005 |

Dimensional datas

| NPS inch | DN | A mm | B mm | H1 mm | W mm | WT kg | T N.m | NPS inch | DN | A mm | B mm | H1 mm | W mm | WT kg | T N.m |
|------------------------|-----|---------|---------|----------|---------|----------|----------|-------------|-----|---------|---------|----------|---------|----------|----------|
| ANSI Class 300# | | | | | | | | | | | | | | | |
| 2 | 50 | 216 | 51 | 170 | 300 | 16 | 86 | ★14 | 350 | 762 | 334 | 420 | 600 | 980 | 3800 |
| 3 | 80 | 283 | 76 | 185 | 500 | 35 | 110 | ★16 | 400 | 838 | 385 | 470 | 600 | 1210 | 5376 |
| 4 | 100 | 305 | 100 | 210 | 550 | 60 | 270 | ★18 | 450 | 914 | 436 | 530 | 600 | 1520 | 8000 |
| ★6 | 150 | 457 | 150 | 260 | 460 | 150 | 500 | ★20 | 500 | 991 | 487 | 590 | 600 | 2010 | 10610 |
| ★8 | 200 | 521 | 201 | 310 | 460 | 250 | 1620 | ★24 | 600 | 1143 | 589 | 600 | 760 | 2520 | 17280 |
| ★10 | 250 | 559 | 252 | 345 | 600 | 350 | 1824 | ★28 | 700 | 1346 | 684 | 750 | 760 | 3600 | 25012 |
| ★12 | 300 | 635 | 303 | 390 | 600 | 580 | 2632 | ★30 | 750 | 1397 | 735 | 850 | 760 | 4620 | 31664 |

Note: ★ Turbine drives



Dimensional datas

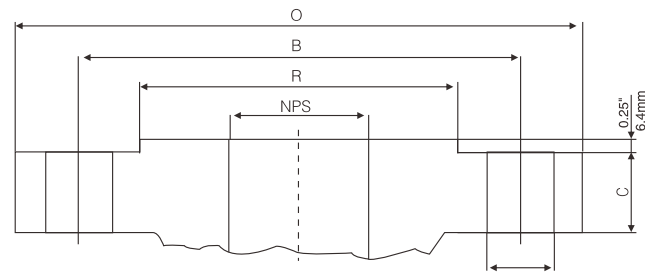
| NPS inch | DN | A mm | B mm | H1 mm | W mm | WT kg | T N.m | NPS inch | DN | A mm | B mm | H1 mm | W mm | WT kg | T N.m |
|------------------------|-----|---------|---------|----------|---------|----------|----------|-------------|-----|---------|---------|----------|---------|----------|----------|
| ANSI Class 600# | | | | | | | | | | | | | | | |
| 2 | 50 | 292 | 51 | 185 | 500 | 27 | 148 | ★14 | 350 | 889 | 334 | 450 | 700 | 1228 | 7255 |
| 3 | 80 | 356 | 76 | 190 | 600 | 48 | 200 | ★16 | 400 | 991 | 385 | 500 | 700 | 1705 | 9174 |
| 4 | 100 | 432 | 100 | 220 | 600 | 95 | 460 | ★18 | 450 | 1092 | 436 | 560 | 760 | 2380 | 13520 |
| ★6 | 150 | 559 | 150 | 270 | 600 | 210 | 908 | ★20 | 500 | 1194 | 487 | 620 | 760 | 2875 | 18034 |
| ★8 | 200 | 660 | 201 | 320 | 600 | 405 | 2560 | ★24 | 600 | 1397 | 589 | 750 | 760 | 4830 | 29512 |
| ★10 | 250 | 787 | 252 | 350 | 600 | 655 | 3048 | ★28 | 700 | 1549 | 684 | 880 | 760 | 5900 | 42264 |
| ★12 | 300 | 838 | 303 | 400 | 700 | 915 | 4300 | ★30 | 750 | 1651 | 735 | 960 | 850 | 7200 | 58864 |

Dimensional datas

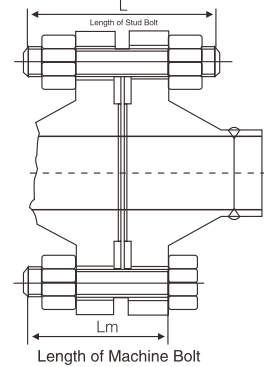
| NPS inch | DN | A mm | B mm | H1 mm | W mm | WT kg | T N.m | NPS inch | DN | A mm | B mm | H1 mm | W mm | WT kg | T N.m |
|------------------------|-----|---------|---------|----------|---------|----------|----------|-------------|-----|---------|---------|----------|---------|----------|----------|
| ANSI Class 900# | | | | | | | | | | | | | | | |
| 2 | 50 | 368 | 49 | 180 | 650 | 40 | 208 | ★12 | 300 | 965 | 303 | 450 | 700 | 1270 | 6000 |
| 3 | 80 | 381 | 74 | 208 | 700 | 70 | 280 | ★14 | 350 | 1029 | 322 | 550 | 700 | 1515 | 10220 |
| 4 | 100 | 457 | 100 | 222 | 800 | 110 | 650 | ★16 | 400 | 1130 | 373 | 650 | 760 | 2420 | 12968 |
| ★6 | 150 | 610 | 150 | 270 | 600 | 255 | 1298 | ★18 | 450 | 1219 | 423 | 750 | 760 | 2740 | 19054 |
| ★8 | 200 | 737 | 201 | 325 | 600 | 525 | 3596 | ★20 | 500 | 1321 | 471 | 830 | 760 | 3325 | 25452 |
| ★10 | 250 | 838 | 252 | 360 | 600 | 810 | 4306 | ★24 | 600 | 1549 | 589 | 950 | 850 | 4800 | 38655 |

Dimensional datas

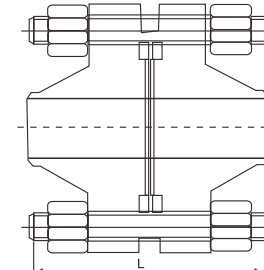
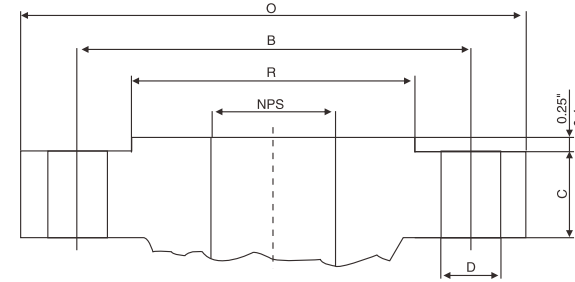
| NPS inch | DN | A mm | B mm | H1 mm | W mm | WT kg | T N.m | NPS inch | DN | A mm | B mm | H1 mm | W mm | WT kg | T N.m |
|-------------------------|-----|---------|---------|----------|---------|----------|----------|-------------|-----|---------|---------|----------|---------|----------|----------|
| ANSI Class 1500# | | | | | | | | | | | | | | | |
| 2 | 50 | 368 | 49 | 175 | 600 | 50 | 330 | ★8 | 200 | 832 | 192 | 360 | 600 | 580 | 5496 |
| 3 | 80 | 470 | 74 | 232 | 930 | 115 | 440 | ★10 | 250 | 991 | 239 | 410 | 700 | 1120 | 6720 |
| 4 | 100 | 546 | 100 | 395 | 460 | 170 | 1034 | ★12 | 300 | 1130 | 287 | 500 | 700 | 1492 | 14520 |
| ★6 | 150 | 705 | 144 | 300 | 600 | 402 | 2084 | ★14 | 350 | 1257 | 315 | 560 | 760 | 2140 | 32600 |



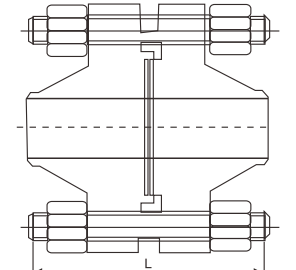
ANSI Class150Lb/300Lb
0.25"(6.4mm) Raised face joint



Length of Machine Bolt



ANSI Class600Lb/900Lb
0.25"(6.4mm) Raised face joint



ANSI Class600Lb/900Lb
Male & female

Class150#

| NPS | | O | | C | | R | | B | | D | | Bolt | | L | | Lm | |
|-------|-----|-------|--------|------|------|-------|--------|-------|--------|------|------|------|-------|-------|-------|------|-------|
| in | mm | in | mm | in | mm | in | mm | in | mm | in | mm | QTY | Diam | in | mm | in | mm |
| 2 | 50 | 6.00 | 152.4 | 0.75 | 19.1 | 3.62 | 91.9 | 4.75 | 120.7 | 0.75 | 19.1 | 4 | 5/8 | 3.25 | 82.6 | 2.75 | 69.9 |
| 2 1/2 | 65 | 7.00 | 177.8 | 0.88 | 22.4 | 4.12 | 104.6 | 5.50 | 139.7 | 0.75 | 19.1 | 4 | 5/8 | 3.50 | 88.9 | 3.00 | 76.2 |
| 3 | 80 | 7.50 | 190.5 | 0.94 | 23.9 | 5.00 | 127.0 | 6.00 | 152.4 | 0.75 | 19.1 | 4 | 5/8 | 3.50 | 88.9 | 3.00 | 76.2 |
| 4 | 100 | 9.00 | 228.6 | 0.94 | 23.9 | 6.19 | 157.2 | 7.50 | 190.5 | 0.75 | 19.1 | 8 | 5/8 | 3.50 | 88.9 | 3.00 | 76.2 |
| 5 | 25 | 10.00 | 254.0 | 0.94 | 23.9 | 7.31 | 185.7 | 8.50 | 215.9 | 0.88 | 22.4 | 8 | 3/4 | 3.75 | 95.3 | 3.25 | 82.6 |
| 6 | 150 | 11.00 | 279.4 | 1.00 | 25.4 | 8.50 | 215.9 | 9.50 | 241.3 | 0.88 | 22.4 | 8 | 3/4 | 4.00 | 101.6 | 3.25 | 82.6 |
| 8 | 200 | 13.50 | 342.9 | 1.12 | 28.4 | 10.62 | 269.7 | 11.75 | 298.5 | 0.88 | 22.4 | 8 | 3/4 | 4.25 | 108.0 | 3.50 | 88.9 |
| 10 | 250 | 16.00 | 406.4 | 1.19 | 30.2 | 12.75 | 323.9 | 14.25 | 362.0 | 1.00 | 25.4 | 12 | 7/8 | 4.50 | 114.3 | 4.00 | 101.6 |
| 12 | 300 | 19.00 | 482.6 | 1.25 | 31.8 | 15.00 | 381.0 | 17.00 | 431.8 | 1.00 | 25.4 | 12 | 7/8 | 4.75 | 120.7 | 4.00 | 101.6 |
| 14 | 350 | 21.00 | 533.4 | 1.38 | 35.1 | 16.25 | 412.8 | 18.75 | 476.3 | 1.12 | 28.4 | 12 | 1 | 5.25 | 133.4 | 4.50 | 114.3 |
| 16 | 400 | 23.50 | 596.9 | 1.44 | 36.6 | 18.50 | 469.9 | 21.25 | 539.8 | 1.12 | 28.4 | 16 | 1 | 5.25 | 133.4 | 4.50 | 114.3 |
| 18 | 450 | 25.00 | 635.0 | 1.56 | 39.6 | 21.00 | 533.4 | 22.75 | 577.9 | 1.25 | 31.8 | 16 | 1 1/8 | 5.75 | 146.1 | 5.00 | 127.0 |
| 20 | 500 | 27.50 | 698.5 | 1.69 | 42.9 | 23.00 | 584.2 | 25.00 | 635.0 | 1.25 | 31.8 | 20 | 1 1/8 | 6.25 | 158.8 | 5.50 | 139.7 |
| 24 | 600 | 32.00 | 812.8 | 1.88 | 47.8 | 27.25 | 692.2 | 39.50 | 749.3 | 1.38 | 35.1 | 20 | 1 1/4 | 6.75 | 171.5 | 6.00 | 152.4 |
| 26 | 650 | 34.25 | 702.0 | 2.69 | 68.3 | 29.50 | 749.3 | 31.75 | 806.5 | 1.38 | 35.1 | 24 | 1 1/4 | 8.25 | 209.6 | 7.50 | 190.5 |
| 28 | 700 | 36.50 | 927.1 | 2.81 | 71.4 | 31.50 | 800.1 | 34.00 | 863.6 | 1.38 | 35.1 | 28 | 1 1/4 | 8.50 | 215.9 | 7.75 | 196.9 |
| 30 | 750 | 38.75 | 984.3 | 2.94 | 74.7 | 33.75 | 857.3 | 36.00 | 914.4 | 1.38 | 35.1 | 28 | 1 1/4 | 9.00 | 228.6 | 8.00 | 203.2 |
| 32 | 800 | 41.75 | 1060.5 | 3.18 | 80.8 | 36.00 | 914.4 | 38.50 | 977.9 | 1.62 | 41.1 | 28 | 1 1/2 | 9.75 | 247.7 | 8.75 | 222.3 |
| 34 | 850 | 43.75 | 1111.3 | 3.25 | 82.6 | 38.00 | 965.2 | 40.50 | 1028.7 | 1.62 | 41.1 | 32 | 1 1/2 | 10.00 | 254.0 | 9.00 | 228.6 |
| 36 | 900 | 46.00 | 1168.4 | 3.56 | 90.4 | 40.25 | 1022.4 | 42.75 | 1085.9 | 1.62 | 41.1 | 32 | 1 1/2 | 10.50 | 266.7 | 9.50 | 241.3 |

Class600#

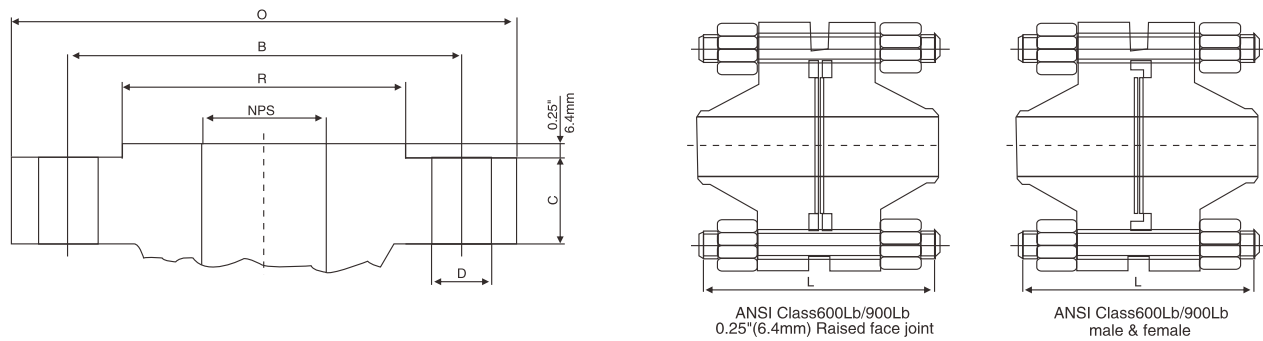
| NPS | | O | | C | | R | | B | | D | | Bolt | | L | | LRTJ | | Lm | |
|-------|-----|-------|--------|------|-------|-------|--------|-------|--------|------|------|------|-------|-------|-------|-------|-------|-------|-------|
| in | mm | in | mm | in | mm | in | mm | in | mm | in | mm | QTY | Diam | in | mm | in | mm | in | mm |
| 2 | 50 | 6.50 | 165.1 | 1.00 | 25.4 | 3.62 | 91.9 | 5.00 | 127.0 | 0.75 | 19.1 | 8 | 5/8 | 4.25 | 108.0 | 4.25 | 108.0 | 4.00 | 101.6 |
| 2 1/2 | 65 | 7.50 | 190.5 | 1.12 | 28.4 | 4.12 | 104.6 | 5.88 | 149.4 | 0.88 | 22.4 | 8 | 3/4 | 4.75 | 120.7 | 4.75 | 120.7 | 4.50 | 114.3 |
| 3 | 80 | 8.25 | 209.6 | 1.25 | 31.8 | 5.00 | 127.0 | 6.62 | 168.1 | 0.88 | 22.4 | 8 | 3/4 | 5.00 | 127.0 | 5.00 | 127.0 | 4.75 | 120.7 |
| 4 | 100 | 10.75 | 273.1 | 1.50 | 38.1 | 6.19 | 157.2 | 8.50 | 215.9 | 1.00 | 25.4 | 8 | 7/8 | 5.75 | 146.1 | 5.75 | 146.1 | 5.50 | 139.7 |
| 5 | 25 | 13.00 | 330.2 | 1.75 | 44.5 | 7.31 | 185.7 | 10.50 | 266.7 | 1.12 | 28.4 | 8 | 1 | 6.50 | 165.1 | 6.50 | 165.1 | 6.25 | 158.8 |
| 6 | 150 | 14.00 | 355.6 | 1.88 | 47.8 | 8.50 | 215.9 | 11.50 | 292.1 | 1.12 | 28.4 | 12 | 1 | 6.75 | 171.5 | 6.75 | 171.5 | 6.50 | 165.1 |
| 8 | 200 | 16.50 | 419.1 | 2.19 | 55.6 | 10.62 | 269.7 | 13.75 | 349.3 | 1.25 | 31.8 | 12 | 1 1/8 | 7.50 | 190.5 | 7.50 | 190.5 | 7.25 | 184.2 |
| 10 | 250 | 20.00 | 508.8 | 2.50 | 63.5 | 12.75 | 323.9 | 17.00 | 431.8 | 1.38 | 35.1 | 16 | 1 1/4 | 8.50 | 215.9 | 8.50 | 215.9 | 8.25 | 209.6 |
| 12 | 300 | 22.00 | 558.8 | 2.62 | 66.5 | 15.00 | 381.0 | 19.25 | 489.0 | 1.38 | 35.1 | 20 | 1 1/4 | 8.75 | 222.3 | 8.75 | 222.3 | 8.50 | 215.9 |
| 14 | 350 | 23.75 | 603.3 | 2.75 | 69.9 | 16.25 | 412.8 | 20.75 | 527.1 | 1.50 | 38.1 | 230 | 1 3/8 | 9.25 | 235.0 | 9.25 | 235.0 | 9.00 | 228.6 |
| 16 | 400 | 27.00 | 685.8 | 3.00 | 76.2 | 18.50 | 469.9 | 23.75 | 603.3 | 1.62 | 41.1 | 20 | 1 1/2 | 10.00 | 254.0 | 10.00 | 254.0 | 9.75 | 247.7 |
| 18 | 450 | 29.25 | 743.0 | 3.25 | 82.6 | 21.00 | 533.4 | 25.75 | 654.1 | 1.75 | 44.5 | 20 | 1 3/8 | 10.75 | 273.1 | 10.75 | 273.1 | 10.50 | 266.7 |
| 20 | 500 | 32.00 | 812.8 | 3.50 | 88.9 | 23.00 | 584.2 | 28.50 | 723.9 | 1.75 | 44.5 | 24 | 1 3/8 | 11.25 | 285.8 | 11.25 | 285.8 | 11.00 | 279.4 |
| 24 | 600 | 37.00 | 939.8 | 4.00 | 101.6 | 27.25 | 692.2 | 33.00 | 838.2 | 2.00 | 50.8 | 24 | 1 3/4 | 13.00 | 330.2 | 13.25 | 336.6 | 12.75 | 323.9 |
| 26 | 650 | 40.00 | 1016.0 | 4.25 | 108.0 | 29.50 | 749.3 | 36.00 | 914.4 | 2.00 | 50.8 | 28 | 1 3/8 | 14.00 | 355.6 | 14.00 | 355.6 | 13.75 | 349.3 |
| 28 | 700 | 42.25 | 1073.2 | 4.38 | 111.3 | 31.50 | 800.1 | 38.00 | 965.2 | 2.12 | 53.8 | 28 | 2 | 14.50 | 368.3 | 14.50 | 368.3 | 14.25 | 362.0 |
| 30 | 750 | 44.50 | 1130.3 | 4.50 | 114.3 | 33.75 | 857.3 | 40.25 | 1022.4 | 2.12 | 53.8 | 28 | 2 | 15.00 | 381.0 | 14.75 | 375.4 | 14.75 | 374.7 |
| 32 | 800 | 47.00 | 1193.8 | 4.62 | 117.3 | 36.00 | 914.4 | 42.50 | 1079.5 | 2.38 | 60.5 | 28 | 2 1/4 | 15.50 | 393.7 | 15.75 | 400.1 | 15.25 | 387.4 |
| 34 | 850 | 49.00 | 1244.6 | 4.75 | 120.7 | 38.00 | 965.2 | 44.50 | 1130.3 | 2.38 | 60.5 | 28 | 2 1/4 | 16.25 | 412.8 | 16.25 | 412.8 | 16.00 | 406.4 |
| 36 | 900 | 51.75 | 1314.5 | 4.88 | 124.0 | 40.25 | 1022.4 | 47.00 | 1193.8 | 2.62 | 66.5 | 28 | 2 1/2 | 15.75 | 400.1 | 16.75 | 425.5 | 15.50 | 393.7 |

Class300#

| NPS | | O | | C | | R | | B | | D | | Bolt | | L | | Lm | |
|-------|-----|-------|--------|------|-------|-------|--------|-------|--------|------|------|------|-------|-------|-------|-------|-------|
| in | mm | in | mm | in | mm | in | mm | in | mm | in | mm | QTY | Diam | in | mm | in | mm |
| 2 | 50 | 6.50 | 165.1 | 0.88 | 22.4 | 3.62 | 91.9 | 5.00 | 127.0 | 0.75 | 19.1 | 8 | 5/8 | 3.50 | 101.6 | 3.00 | 76.2 |
| 2 1/2 | 65 | 7.50 | 190.5 | 1.00 | 25.4 | 4.12 | 104.6 | 5.88 | 149.4 | 0.88 | 22.4 | 8 | 3/4 | 4.00 | 114.3 | 3.25 | 82.6 |
| 3 | 80 | 8.25 | 209.6 | 1.12 | 28.4 | 5.00 | 127.0 | 6.62 | 168.1 | 0.88 | 22.4 | 8 | 3/4 | 4.25 | 120.7 | 3.50 | 88.9 |
| 4 | 100 | 10.00 | 254.0 | 1.25 | 31.8 | 6.19 | 157.2 | 7.88 | 200.2 | 0.88 | 22.4 | 8 | 3/4 | 4.50 | 127.0 | 3.75 | 95.3 |
| 5 | 25 | 11.00 | 279.4 | 1.38 | 35.1 | 7.31 | 185.7 | 9.25 | 235.0 | 0.88 | 22.4 | 8 | 3/4 | 4.75 | 133.4 | 4.25 | 108.0 |
| 6 | 150 | 12.50 | 317.5 | 1.44 | 36.6 | 8.50 | 215.9 | 10.62 | 269.7 | 0.88 | 22.4 | 12 | 3/4 | 4.75 | 133.4 | 4.25 | 108.0 |
| 8 | 200 | 15.00 | 381.0 | 1.62 | 41.1 | 10.62 | 269.7 | 13.00 | 330.2 | 1.00 | 25.4 | 12 | 7/8 | 5.50 | 152.4 | 4.75 | 120.7 |
| 10 | 250 | 17.50 | 444.5 | 1.88 | 47.8 | 12.75 | 323.9 | 15.25 | 387.4 | 1.12 | 28.4 | 16 | 1 | 6.25 | 171.5 | 5.50 | 139.7 |
| 12 | 300 | 20.50 | 520.7 | 2.00 | 50.8 | 15.00 | 381.0 | 17.75 | 450.9 | 1.25 | 31.8 | 16 | 1 1/8 | 6.75 | 184.2 | 5.75 | 146.1 |
| 14 | 350 | 23.00 | 584.2 | 2.12 | 53.8 | 16.25 | 412.8 | 20.25 | 514.4 | 1.25 | 31.8 | 20 | 1 1/8 | 7.00 | 190.5 | 6.25 | 158.8 |
| 16 | 400 | 25.50 | 647.7 | 2.25 | 57.2 | 18.50 | 469.9 | 22.50 | 571.5 | 1.38 | 35.1 | 20 | 1 1/4 | 7.50 | 203.2 | 6.50 | 165.1 |
| 18 | 450 | 28.00 | 711.2 | 2.38 | 60.5 | 21.00 | 533.4 | 24.75 | 627.7 | 1.38 | 35.1 | 24 | 1 1/4 | 7.75 | 209.3 | 6.75 | 171.5 |
| 20 | 500 | 30.50 | 774.7 | 2.50 | 63.5 | 23.00 | 584.2 | 27.00 | 685.8 | 1.38 | 35.1 | 24 | 1 1/4 | 8.00 | 222.3 | 7.25 | 184.2 |
| 24 | 600 | 36.00 | 914.4 | 2.75 | 69.9 | 27.25 | 692.2 | 32.00 | 812.8 | 1.62 | 41.1 | 24 | 1 1/2 | 9.00 | 254.0 | 8.00 | 203.2 |
| 26 | 650 | 38.25 | 971.6 | 3.12 | 79.2 | 29.50 | 749.3 | 34.50 | 876.3 | 1.75 | 44.5 | 28 | 1 3/8 | 10.25 | 285.8 | 9.25 | 235.0 |
| 28 | 700 | 40.75 | 1035.1 | 3.38 | 85.9 | 31.50 | 800.1 | 37.00 | 939.8 | 1.75 | 44.5 | 28 | 1 3/8 | 10.75 | 298.5 | 9.75 | 247.7 |
| 30 | 750 | 43.00 | 1092.2 | 3.62 | 91.9 | 33.75 | 857.3 | 39.25 | 997.0 | 1.88 | 47.8 | 28 | 1 3/4 | 11.50 | 317.5 | 10.50 | 266.7 |
| 32 | 800 | 45.25 | 1149.4 | 3.88 | 98.6 | 36.00 | 914.4 | 41.50 | 1054.1 | 2.00 | 50.8 | 28 | 1 3/8 | 12.25 | 342.9 | 11.25 | 285.8 |
| 34 | 850 | 47.50 | 1206.5 | 4.00 | 101.6 | 38.00 | 965.2 | 43.50 | 1104.9 | 2.00 | 50.8 | 28 | 1 3/8 | 12.75 | 349.3 | 11.75 | 298.5 |
| 36 | 900 | 50.00 | 1270.0 | 4.12 | 104.6 | 40.25 | 1022.4 | 46.00 | 1168.4 | 2.12 | 53.8 | 32 | 2 | 13.25 | 362.0 | 12.25 | 311.2 |

Note: ★ Turbine drives

Class900#



Class1500#

| NPS | | O | | C | | R | | B | | D | | Bolt | | L | | L _{RTJ} | | L _m | |
|-------|-----|-------|--------|------|-------|-------|-------|-------|-------|-------|------|------|-------|-------|-------|------------------|-------|----------------|-------|
| in | mm | in | mm | in | mm | in | mm | in | mm | in | mm | QTY | Diam | in | mm | in | mm | in | mm |
| 2 | 50 | 8.50 | 215.9 | 1.50 | 38.1 | 3.62 | 91.9 | 6.50 | 165.1 | 1.00 | 25.4 | 8 | 7/8 | 5.75 | 146.1 | 5.75 | 146.1 | 5.50 | 139.7 |
| 2 1/2 | 65 | 9.62 | 244.3 | 1.62 | 41.1 | 4.12 | 104.6 | 7.50 | 190.5 | 1.012 | 28.4 | 8 | 1 | 6.25 | 158.8 | 6.25 | 158.8 | 6.00 | 152.4 |
| 3 | 80 | 10.50 | 266.7 | 1.88 | 47.8 | 5.00 | 127.0 | 8.00 | 203.2 | 1.25 | 31.8 | 8 | 1 1/8 | 7.00 | 177.8 | 7.00 | 177.8 | 6.75 | 171.5 |
| 4 | 100 | 12.25 | 311.2 | 2.12 | 53.8 | 6.19 | 157.2 | 9.50 | 241.3 | 1.38 | 35.1 | 8 | 1 1/4 | 7.75 | 196.9 | 7.75 | 196.9 | 7.50 | 190.5 |
| 5 | 25 | 14.75 | 374.7 | 2.88 | 73.2 | 7.31 | 185.7 | 11.50 | 292.1 | 1.62 | 41.1 | 8 | 1 1/2 | 9.75 | 247.7 | 9.75 | 247.7 | 9.50 | 241.3 |
| 6 | 150 | 15.50 | 393.7 | 3.25 | 82.6 | 8.50 | 215.9 | 12.50 | 317.5 | 1.50 | 38.1 | 12 | 1 3/8 | 10.25 | 260.4 | 10.50 | 266.7 | 10.00 | 254.0 |
| 8 | 200 | 19.00 | 482.6 | 3.62 | 91.9 | 10.62 | 269.7 | 15.50 | 393.7 | 1.75 | 44.5 | 12 | 1 5/8 | 11.50 | 292.1 | 12.75 | 323.9 | 11.25 | 285.8 |
| 10 | 250 | 23.00 | 584.2 | 4.25 | 108.0 | 12.75 | 323.9 | 19.00 | 482.6 | 2.00 | 50.8 | 12 | 1 7/8 | 13.25 | 336.6 | 13.50 | 342.9 | 13.00 | 330.2 |
| 12 | 300 | 26.50 | 673.1 | 4.88 | 124.0 | 15.00 | 381.0 | 22.50 | 571.5 | 2.12 | 53.8 | 16 | 2 | 14.75 | 374.7 | 15.25 | 387.4 | 14.50 | 368.3 |
| 14 | 350 | 29.50 | 749.3 | 5.25 | 133.4 | 16.25 | 412.8 | 25.00 | 635.0 | 2.38 | 60.5 | 16 | 2 1/4 | 16.00 | 406.4 | 16.75 | 425.5 | 15.75 | 400.1 |
| 16 | 400 | 32.50 | 825.5 | 5.75 | 146.1 | 18.50 | 469.9 | 27.50 | 704.9 | 2.62 | 66.5 | 16 | 2 1/2 | 17.50 | 444.5 | 18.50 | 469.9 | 17.25 | 438.2 |
| 18 | 450 | 36.00 | 914.4 | 6.38 | 162.1 | 21.00 | 533.4 | 30.50 | 774.7 | 2.88 | 73.2 | 16 | 2 3/4 | 19.50 | 495.3 | 20.75 | 527.1 | 19.25 | 489.0 |
| 20 | 500 | 38.75 | 984.3 | 7.00 | 177.8 | 23.00 | 584.2 | 32.75 | 831.9 | 3.12 | 79.2 | 16 | 2 | 21.25 | 539.8 | 22.25 | 565.2 | 21.00 | 533.4 |
| 24 | 600 | 46.00 | 1168.4 | 8.00 | 203.2 | 27.25 | 692.2 | 39.00 | 990.6 | 3.62 | 91.9 | 16 | 3 1/2 | 24.25 | 616.0 | 25.50 | 647.7 | 24.00 | 609.6 |

Class2500#

| NPS | | O | | C | | R | | B | | D | | Bolt | | L | | L _{RTJ} | | L _m | |
|-------|-----|-------|-------|------|-------|-------|-------|-------|-------|------|------|------|-------|-------|-------|------------------|-------|----------------|-------|
| in | mm | in | mm | in | mm | in | mm | in | mm | in | mm | QTY | Diam | in | mm | in | mm | in | mm |
| 2 | 50 | 9.25 | 235.0 | 2.00 | 50.8 | 3.62 | 91.9 | 6.75 | 171.5 | 1.12 | 28.4 | 8 | 1 | 7.00 | 177.8 | 7.00 | 177.8 | 6.75 | 171.5 |
| 2 1/2 | 65 | 10.50 | 266.7 | 2.25 | 57.2 | 4.12 | 104.6 | 7.75 | 196.9 | 1.25 | 31.8 | 8 | 1 1/8 | 7.75 | 196.9 | 8.00 | 203.2 | 7.50 | 190.5 |
| 3 | 80 | 12.00 | 304.8 | 2.62 | 66.5 | 5.00 | 127.0 | 9.00 | 228.6 | 1.38 | 35.1 | 8 | 1 1/4 | 8.75 | 222.3 | 9.00 | 228.6 | 8.50 | 215.9 |
| 4 | 100 | 14.00 | 355.6 | 3.00 | 76.2 | 6.19 | 157.2 | 10.75 | 273.1 | 1.62 | 41.1 | 8 | 1 1/2 | 10.00 | 254.0 | 10.25 | 260.4 | 9.75 | 247.7 |
| 5 | 25 | 16.50 | 419.1 | 3.62 | 91.9 | 7.31 | 185.7 | 12.75 | 323.9 | 1.88 | 47.8 | 8 | 1 3/4 | 11.75 | 298.5 | 12.25 | 311.2 | 11.50 | 292.1 |
| 6 | 150 | 19.00 | 482.6 | 4.25 | 108.0 | 8.50 | 215.9 | 14.50 | 368.3 | 2.12 | 53.8 | 8 | 2 | 13.50 | 342.9 | 14.00 | 355.6 | 13.25 | 336.6 |
| 8 | 200 | 21.75 | 552.5 | 5.00 | 127.0 | 10.62 | 269.7 | 17.25 | 438.2 | 2.12 | 53.8 | 12 | 2 | 15.00 | 381.0 | 15.50 | 393.7 | 14.75 | 374.7 |
| 10 | 250 | 26.50 | 673.1 | 6.50 | 165.1 | 12.75 | 323.9 | 21.25 | 539.8 | 2.12 | 66.5 | 12 | 2 1/2 | 19.25 | 489.0 | 20.00 | 508.0 | 19.00 | 482.6 |
| 12 | 300 | 30.00 | 762.0 | 7.25 | 184.2 | 15.00 | 381.0 | 24.38 | 619.3 | 2.88 | 73.2 | 12 | 2 3/4 | 21.25 | 539.8 | 22.00 | 558.8 | 21.00 | 533.4 |

| No of internal parts | Seat ring or body | Gate, disc, ball or body | Stem | No of internal parts | Seat ring or body | Gate, disc, ball or body | Stem |
|----------------------|-------------------|--------------------------|-------------|----------------------|-------------------|--------------------------|----------|
| 01 | 13Cr | 13Cr | 13Cr | 31 | STELLITE | 321SS | 321SS |
| 02 | 304SS | 304SS | 304SS | 32 | STELLITE | STELLITE | 321SS |
| 03 | 310SS | 310SS | 310SS | 33 | 347SS | 347SS | 347SS |
| 04 | HARD 13Cr | HARD 13Cr | 13Cr | 34 | STELLITE | 347SS | 347SS |
| 05 | STELLITE | STELLITE | 13Cr | 35 | NICKEL ALLOY | 13Cr | 13Cr |
| 06 | Cu-Ni | 13Cr | 13Cr | 36 | A105/PTFE | A105+ENP | A105+ENP |
| 07 | 13Cr | HARD 13Cr | 13Cr | 37 | A105/PTFE | WCB+ENP | A105+ENP |
| 08 | STELLITE | 13Cr | 13Cr | 38 | 13Cr/PTFE | 13Cr | 13Cr |
| 09 | Cu-Ni | Cu-Ni | Cu-Ni | 39 | 304SS/PTFE | 304SS | 304SS |
| 10 | 316SS | 316SS | 316SS | 40 | 316SS/PTFE | 316SS | 316SS |
| 11 | Cu-Ni | STELLITE | Cu-Ni | 41 | A105/RPTFE | A105+ENP | A105+ENP |
| 12 | STELLITE | 316SS | 316SS | 42 | A105/RPTFE | WCB+ENP | A105+ENP |
| 13 | ALLOY 20 | ALLOY 20 | ALLOY 20 | 43 | 13Cr/RPTFE | 13Cr | 13Cr |
| 14 | STELLITE | ALLOY 20 | ALLOY 20 | 44 | 304SS/RPTFE | 304SS | 304SS |
| 15 | STELLITE | STELLITE | 304SS | 45 | 316SS/RPTFE | 316SS | 316SS |
| 16 | STELLITE | STELLITE | 316SS | 46 | A105/NYLON | A105+ENP | A105+ENP |
| 17 | STELLITE | STELLITE | 347SS | 47 | A105/NYLON | WCB+ENP | A105+ENP |
| 18 | STELLITE | STELLITE | ALLOY 20 | 48 | A105/NYLON | 304SS | 304SS |
| 19 | MONEL | MONEL | MONEL | 49 | A105/NYLON | 316SS | 316SS |
| 20 | BRONZE | BRONZE | 13Cr | 50 | 13Cr/NYLON | 13Cr | 13Cr |
| 21 | HASTELLOY B | HASTELLOY B | HASTELLOY B | 51 | 304SS/NYLON | 304SS | 304SS |
| 22 | | HASTELLOY C | HASTELLOY C | 52 | 316SS/NYLON | 316SS | 316SS |
| 23 | STELLITE | 304SS | 304SS | 53 | A105/PEEK | A105+ENP | A105+ENP |
| 24 | 304LSS | 304LSS | 304LSS | 54 | A105/PEEK | WCB+ENP | A105+ENP |
| 25 | STELLITE | 304LSS | 304LSS | 55 | 13Cr/PEEK | 13Cr | 13Cr |
| 26 | STELLITE | STELLITE | 304LSS | 56 | 304SS/PEEK | 304SS | 304SS |
| 27 | 316LSS | 316LSS | 316LSS | 57 | 316SS/PEEK | 316SS | 316SS |
| 28 | STELLITE | 316LSS | 316LSS | | | | |
| 29 | STELLITE | STELLITE | 316LSS | | | | |
| 30 | 321SS | 321SS | 321SS | | | | |

Note: please indicate it directly in the order for the internal part' smaterial uncovered in the table

- | | | | | |
|------------------------------------|-----------------------------------|--|---------------------------------------|---------------------------------|
| Архангельск (8182)63-90-72 | Ижевск (3412)26-03-58 | Магнитогорск (3519)55-03-13 | Пермь (342)205-81-47 | Сургут (3462)77-98-35 |
| Астана (7172)727-132 | Иркутск (395)279-98-46 | Москва (495)268-04-70 | Ростов-на-Дону (863)308-18-15 | Тверь (4822)63-31-35 |
| Астрахань (8512)99-46-04 | Казань (843)206-01-48 | Мурманск (8152)59-64-93 | Рязань (4912)46-61-64 | Томск (3822)98-41-53 |
| Барнаул (3852)73-04-60 | Калининград (4012)72-03-81 | Набережные Челны (8552)20-53-41 | Самара (846)206-03-16 | Тула (4872)74-02-29 |
| Белгород (4722)40-23-64 | Калуга (4842)92-23-67 | Нижний Новгород (831)429-08-12 | Санкт-Петербург (812)309-46-40 | Тюмень (3452)66-21-18 |
| Брянск (4832)59-03-52 | Кемерово (3842)65-04-62 | Новокузнецк (3843)20-46-81 | Саратов (845)249-38-78 | Ульяновск (8422)24-23-59 |
| Владивосток (423)249-28-31 | Киров (8332)68-02-04 | Новосибирск (383)227-86-73 | Севастополь (8692)22-31-93 | Уфа (347)229-48-12 |
| Волгоград (844)278-03-48 | Краснодар (861)203-40-90 | Омск (3812)21-46-40 | Симферополь (3652)67-13-56 | Хабаровск (4212)92-98-04 |
| Вологда (8172)26-41-59 | Красноярск (391)204-63-61 | Орел (4862)44-53-42 | Смоленск (4812)29-41-54 | Челябинск (351)202-03-61 |
| Воронеж (473)204-51-73 | Курск (4712)77-13-04 | Оренбург (3532)37-68-04 | Сочи (862)225-72-31 | Череповец (8202)49-02-64 |
| Екатеринбург (343)384-55-89 | Липецк (4742)52-20-81 | Пенза (8412)22-31-16 | Ставрополь (8652)20-65-13 | Ярославль (4852)69-52-93 |
| Иваново (4932)77-34-06 | Киргизия (996)312-96-26-47 | Казахстан (772)734-952-31 | Таджикистан (992)427-82-92-69 | |

<https://sedelon.nt-rt.ru/> || sde@nt-rt.ru