

SEDELON VALVES



GATE VALVE

- Cast Steel Gate Valve
- Stainless Steel Gate Valve
- Pressure Seal Gate Valve
- Bellows Gate Valve
- Parallel Seat through Conduit Gate Valve
- Forged Gate Valve
- DIN Gate Galve
- Knife Vate Valve



Архангельск (8182)63-90-72
Астана (7172)727-132
Астрахань (8512)99-46-04
Барнаул (3852)73-04-60
Белгород (4722)40-23-64
Брянск (4832)59-03-52
Владивосток (423)249-28-31
Волгоград (844)278-03-48
Вологда (8172)26-41-59
Воронеж (473)204-51-73
Екатеринбург (343)384-55-89
Иваново (4932)77-34-06

Жевск (3412)26-03-58
Иркутск (395)279-98-46
Издань (843)206-01-48
Илининград (4012)72-03-81
Илуга (4842)92-23-67
Имерово (3842)65-04-62
Иров (8332)68-02-04
Ираснодар (861)203-40-90
Ирасноярск (391)204-63-61
Иурск (4712)77-13-04
Иипецк (4742)52-20-81
Ииргизия (996)312-96-26-47

Иагнитогорск (3519)55-03-13
Иосква (495)268-04-70
Иурманск (8152)59-64-93
Иабережные Челны (8552)20-53-41
Иижний Новгород (831)429-08-12
Иовокузнецк (3843)20-46-81
Иовосибирск (383)227-86-73
Иоск (3812)21-46-40
Ирел (4862)44-53-42
Иренбург (3532)37-68-04
Иенза (8412)22-31-16
Иазахстан (772)734-952-31

Иермь (342)205-81-47
Иостов-на-Дону (863)308-18-15
Иязань (9912)46-61-64
Исамаара (846)206-03-16
Исанкт-Петербург (812)309-46-40
Исаратов (845)249-38-78
Исевастополь (8692)22-31-93
Исимферополь (3652)67-13-56
Исмоленск (4812)29-41-54
Исоchi (862)225-72-31
Иставрополь (8652)20-65-13
Итаджикистан (992)427-82-92-69

Иургут (3462)77-98-35
Иверь (4822)63-31-35
Иомск (3822)98-41-53
Иула (4872)74-02-29
Июень (3452)66-21-18
Ильяновск (8422)24-23-59
Ифа (347)229-46-12
Илябаровск (4212)92-98-04
Иелябинск (351)202-03-61
Иереповец (8202)49-02-64
Ирославль (4852)69-52-93



SEDELON VALVES

Gate Valve Series

Globe Valve Series Check Valve Series Strainer Series

Ball Valve Series

Plug Valve Series Butterfly Valve Series

Bronze Valve Series



**To whom
it may
concern**

Dear and Valuable Customer,

Believe and it becomes-SEDELON!

I am writing this letter to thank you for all your trust and support for SEDELON.

I believe you may here find a new continent.

Since 1998, Sedelon has rich experience and various achievement of gate valves, globe valves, check valves, ball valves, and butterfly valves for environment and safety in industrial projects.

Based on your ceaseless valuable feedback, Sedelon now has developed into a strong valve manufacturer which highly devotes to Quality and Service.

What we desire presently is to exceed our customers' expectation and lead a long-term enjoyable relationship with you.

Sincerely and warmly welcome your visit to Sedelon , we are always saving the best for you. Trust Sedelon, trust yourself.

May blessings and happiness all around you.

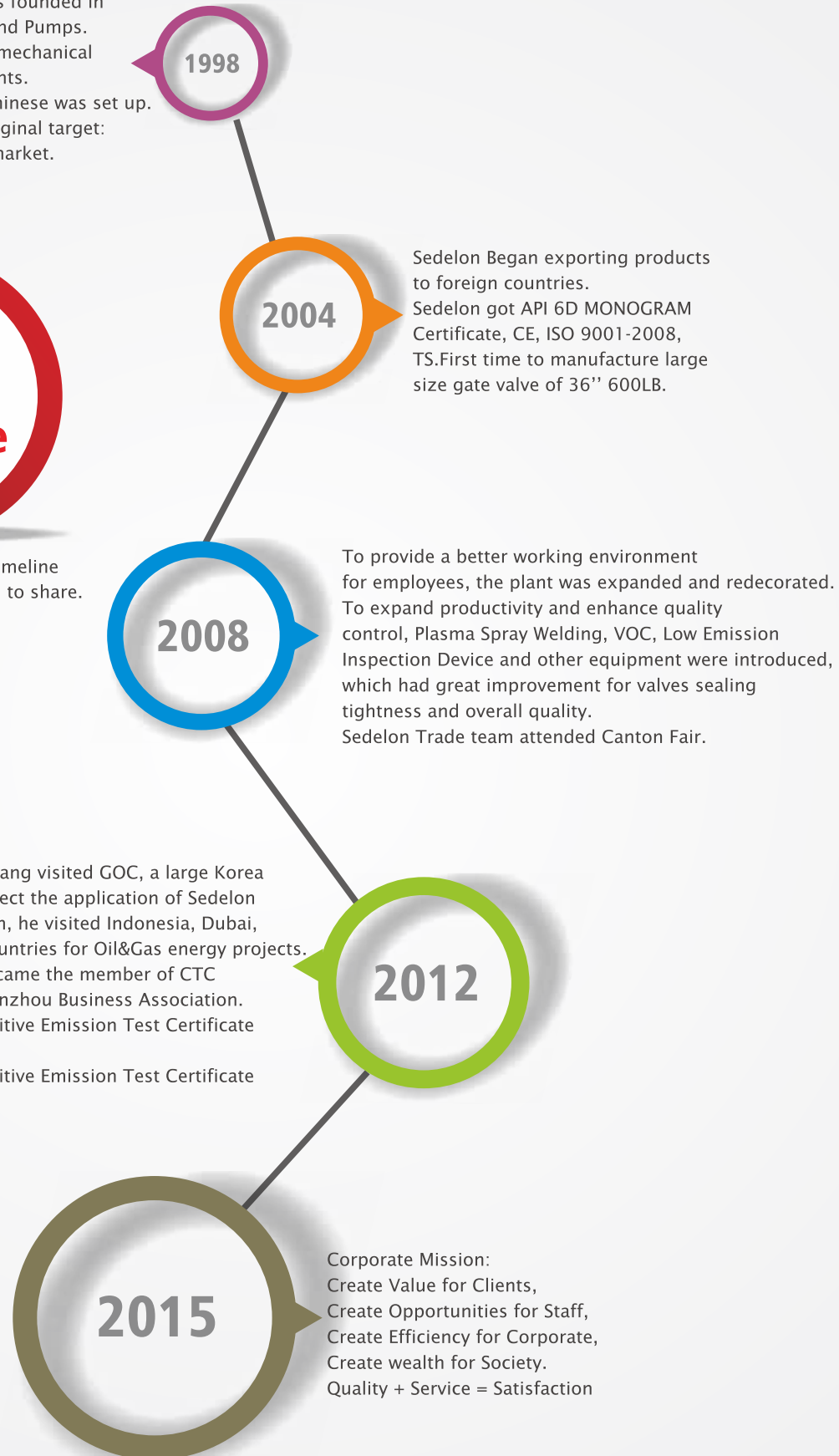
Faithfully

Sam Zhang

The Sedelon Valve Co., Ltd. was founded in Wenzhou, the land of Valves and Pumps. Sedelon introduced advanced mechanical equipment and absorbing talents. Company official website in Chinese was set up. Sedelon had set company's original target: Marching towards the global market.

Sedelon Valve Timeline

Following a rich history timeline of Sedelon Valve is proud to share.



To be continued . . .

China

Since 1998

About Us

Sedelon Valve Company is Established in 1998.
Based in "The City of Valves and Pumps" Wenzhou, Zhejiang, China,
This Company is a Professional Manufacturer.

The main products of this company are Bronze valves, API/DIN gate/globe/ check valves, ball valves, butterfly valves, forged steel valves, ect. Its products have been widely used in petroleum, chemical, metallurgy, electric power, water conservancy, machinery and many other fields.

In order to provide customer high-quality and better service, the company has equipped the system certification such as API6D, CE, ISO9001, TS, Fugitive Emission Certificates, ect.

We have a strong management team which is formed by advanced technical experts, engineers, managers and salesmen. We emphasize the importance of teamwork. Working together and helping each other, we are just like a big and warm family.

The members of Sedelon all uphold the core concept of **"Quality + Service = Satisfaction"**.

We sincerely provide you high-quality products and excellent service. We are striving to be your first choice of manufacturer and supplier.



Producing Equipment

In order to improve the comprehensive strength and provide high performance products, Sedelon had tried our best to meet various requirements from customers by introducing advanced technology equipment. These producing equipment are necessary in valve production and we choose the superior.



- Vertical lathe
- Boring machine
- Engine lathe
- Milling machine
- Drilling machine
- Plasma spray welding machine
- Shot blasting machine
- Numerically controlled lathe
- Forklift trucks



As we all know, quality is the core of a brand, so Sedelon has built a very strict procedure for valve testing, following is our major testing equipment, some of which are imported from abroad.

Testing Equipment

- Automated Discrete Analyzer
- Fugitive Emission Testing(VOC)
- Impact Testing Machine
- Penetrant Testing
- Professional Paint Equipment
- Spectrometer(PMI)
- Wall Thickness Measurement Gauge
- Tension Test Machine
- Valve Pressure Test Device(From 150# to 2500# for 1/2" to 60")



Certificates

Sedelon Valve company compay to date has obtained the following main certifications :

CE, API6D, ISO9001,TS, Fugitive Emission Test Certificate and more to come.

We cherish our honor, We cherish our brand, we believe that we will be better in the near future.

Sedelon® Fugitive Emission Valves

Environmental Protection is Also Our Top Concern.
Sedelon Acquired Fugitive Emission Test Certificate.
Customized Packing Material, Perfect Sealing Performance.



Fugitive Emission Definition :

Pollutant released into air from leaks in equipment, pipe lines, seals, valves, etc., and not from the usual sources such chimneys and vents.

Protection of the Environment :

Environmental protection has been a top-concern topic of the whole world. Solutions are urgently needed to reduce the pressure loss and gas emission.

Perfect Sealing Performance :

Fugitive Emission Valves have already been adopted for the pipes in which the medium is poisonous, flammable and combustible. Gaskets and packing with high density and tightness are key points to avoid the emission.

Specialized Equipment :

The Leakage cannot be judged only by regular Air Test or Hydrostatic Test. In this case, helium instead of nitrogen will be used for the testing. Under the operation of the special facility, valves will be opened and closed automatically and frequently at the speed of 50 times per minutes to ensure the tightness. In the whole process, VOC testing facility is equipped nearby to monitor the sealing performance.

Contents

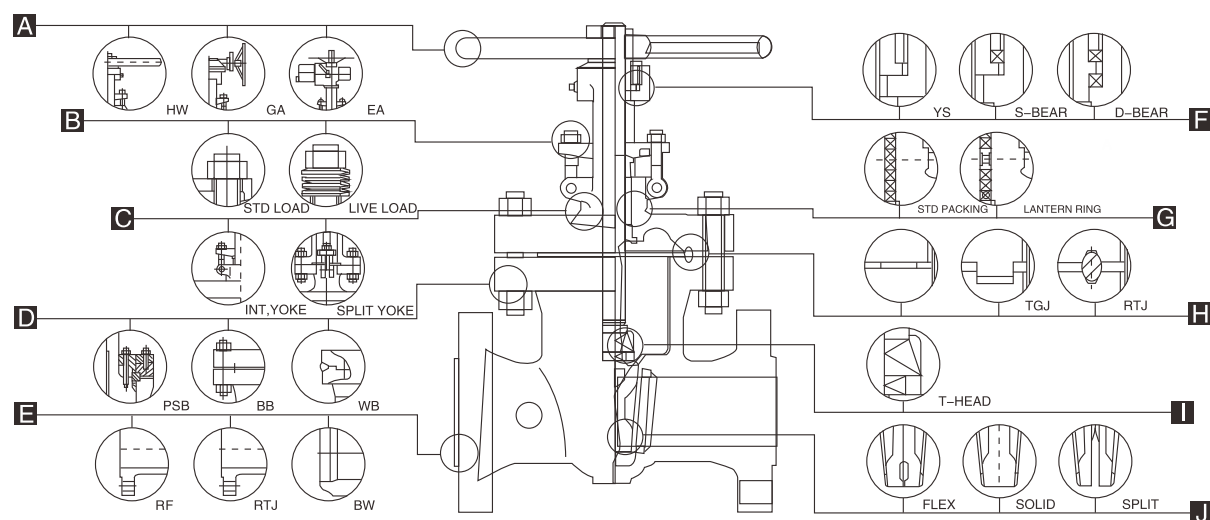
Gate Valve Series

- 04 Cast Steel Gate Valve
150#~2500#
- 08 Stainless Steel Gate Valve
150#~600#
- 10 Pressure Seal Gate Valve
900#~2500#
- 12 Bellow Gate Valve
150#~600#
- 14 Parallel Seat Through Conduit
Gate Valve 150#~1500#
- 17 Forged Gate Valve
150#~1500#
- 19 F4 Series DIN Gate valves
PN16~PN25
- 21 F5 Series DIN3352 Gate Valve
PN16~PN25
- 23 F7 Series DIN3352 Gate Valve
PN40~PN64
- 24 Double Sealing
Knife Gate Valve
- 25 Double Sealing Bevel Gear
Knife Gate Valve
- 26 Flanged Ends 150#~2500#
- 29 Flanged Ends 150#~2500#



Gate Valves, Cast Steel, Type:
Wedge
Parallel seat, Through Conduit
Pressure Seal





A Operation

Hand wheel operated
Gear operated
Motor operated
Pneumatic operated
Hydraulic operated

B Live Load Packing

Requiring frequent cycling or with high pressure/temperature variations, live loading extends the service life between maintenance periods. Belleville springs are employed to provide constant packing gland stress.

C OS & Y

Outside screw and yoke, cast steel gate valve yoke integral with bonnet for 150LB-8", 600LB-6", 900LB-4" & small, larger will be Split Yoke

D BB

Bolted bonnet
Welding bonnet
Pressure seal bonnet

E End Connections

Flanged
RTJ/RJ flanged
Butt welding

F Yoke sleeve

Extra long thread engagement between yoke sleeve and stem provide long thread life, valves of size larger than 150LB-12", 300LB-10", 600LB-6", 900LB/1500LB/2500LB-4" are regularly provided with roll bearing yokes.

G Lantern Ring And Double Packing Set

Lantern ring leak-off fitting connection and double packing stack is optionally available for critical services

H Body-to-Bonnet Joint

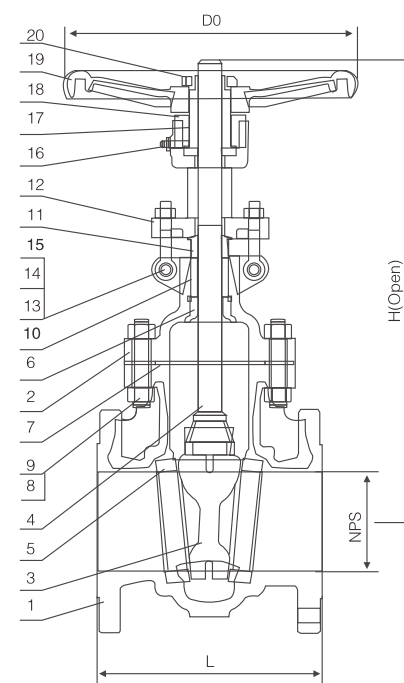
A flat gasket joint is used in the 150LB valves. A male and female joint is used in 300LB to 600LB valves, ring joint is used in the body to bonnet connection in 900LB & higher rated valves.

I Disc

All wedge gate valves are provided with upset forged T-head stems. By forging the T-head, the stem at the stem-wedge connection is strengthened, this design also allows the wedge possibility of a bent stem jamming the wedge.

J Wedge

Flexible wedge
Solid wedge
Split wedge/Double wedge



Materials of parts

No	Part Name	ASTM Material		
1	Body	A216-WCB	A217-WC6	A352-LCB
2	Bonnet	A216-WCB	A217-WC6	A352-LCB
3	Wedge	A216-WCB+CR13	A217-WC6+HF	A352-LCB+CR13
4	Stem	A182-F6a	CR-MO-V	A182-F6a
5	Seat ring	A105+CR13	A182-F11+HF	A350-LF2+CR13
6	Stem Backseat	A276-420	A276-304	A276-420
7	Bonnet Gasket	Spiral wound (Graphite+304)		
8	Bonnet Stud	A193-B7	A193-B16	A320-L7
9	Bonnet Stud Nut	A194-2H	A194-7	A194-4
10	Packing	Graphite		
11	Gland	A276-420	A276-304	A276-420
12	Gland Flange	A216-WCB	A217-WC6	A352-LCB
13	EyeBolt Pin	Carbon steel	A276-420	Carbon steel
14	Eyebolt	Carbon steel	A193-B7	Carbon steel
15	Eyebolt Nut	Carbon steel	A194-2H	Carbon steel
16	Grease Fitting	Brass+Steel		
17	Yoke Sleeve	Aluminum-Bronze		
18	Yokesleeve Jam nut	Carbon Steel		
19	Handwheel	Malleable Iron		
20	Handwheel Nut	Carbon Steel		

Note:

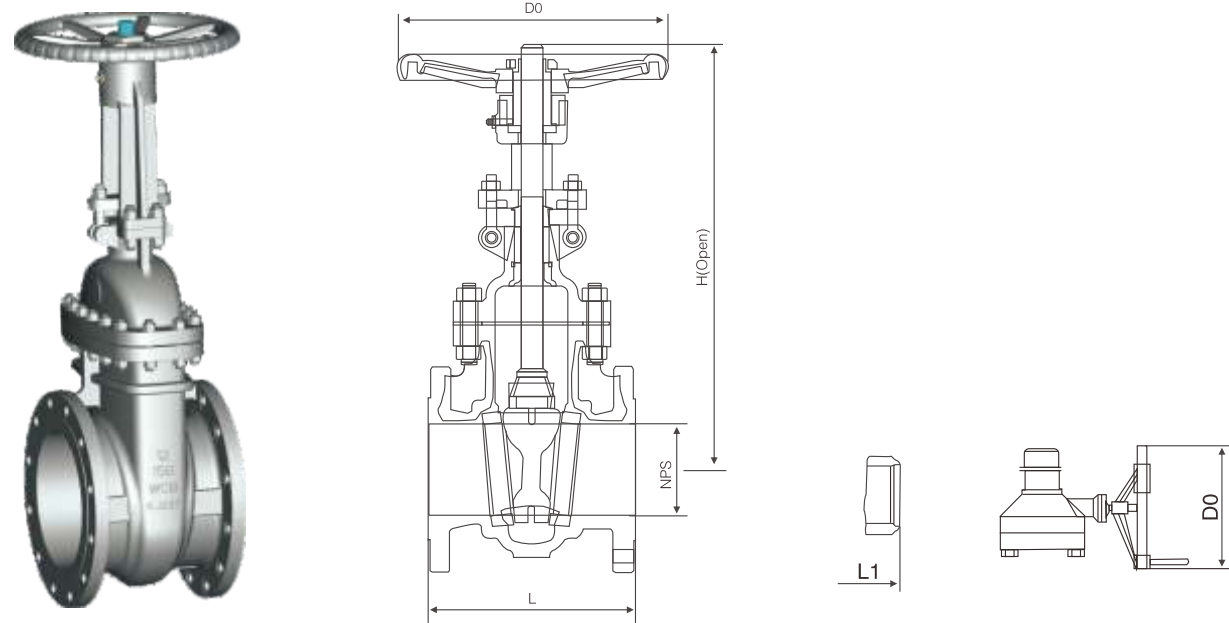
- 1). Ductile Ni-resist optional
- 2). Wedge and seat ring may either be solid facing material or a base material equal to or better than the body/bonnet material with facing as shown.

Applicable standards:

- STEEL GATE VALVES API 600/API 6D
- STEEL GATE VALVES ISO 10434/ISO 14313
- STEEL VALVES, ASME B16.34
- FACE TO FACE, ASME B16.10
- END FLANGES, ASME B16.5
- BUTTWELDING ENDS, ASME B16.25
- INSPECTION AND TEST API 598/API 6D

Design descriptions:

- FULL PORT DESIGN
- OS&Y OUTSIDE SRCEW AND YOKE
- BB. BOLTED BONNET
- FLEXIBLE WEDGE, FULLY GUIDED
- CHOICE OF SOLID OR SPLIT WEDGE
- RENEWABLE SEAT RINGS
- FORGED T-HEAD STEM
- RISING STEM AND NON-RISING HANDWHEEL
- FLANGED OR BUTTWELDING ENDS
- AVAILABLE WITH BG OPERATOR



Dimensional datas of ANSI Class 150#

NPS DN	2 50	2½ 65	3 80	4 100	6 150	8 200	10 250	12 300	14 350	16 400	18 450	20 500	24 600	26 650	28 700	30 750	32 800	36 900	in mm
L (RF)	7.00	7.50	8.00	9.00	10.50	11.50	13.00	14.00	15.00	16.00	17.00	18.00	20.00	22.00	24.00	24.00	28.00	28.00	in
L1 (BW)	85	9.50	11.12	12.00	15.88	16.50	18.00	19.75	22.50	24.00	26.00	28.00	32.00	34.00	36.00	36.00	38.00	40.00	in
H (open)	15.25	17.00	18.88	23.00	30.50	37.62	45.50	53.12	59.38	67.00	74.50	83.50	98.25	110.50	116.50	124.00	129.00	146.50	in
Do	8	8	10	12	12	14	16	15	20	22	24	26	29	29	32	32	38	40	in
wt(kg)	18	25	32	50	77	121	178	265	463	463	621	792	1521	1521	1838	2261	2490	3310	RF
	15	18	26	41	69	108	156	248	424	424	587	752	1570	1570	1900	3310	2540	3380	BW

Dimensional datas of ANSI Class 300#

NPS DN	2 50	2½ 65	3 80	4 100	6 150	8 200	10 250	12 300	14 350	16 400	18 450	20 500	24 600	26 650	28 700	30 750	32 800	36 900	in mm
L/L1 (RF/BW)	8.50	9.50	11.12	12.00	15.88	16.50	18.00	19.75	30.00	33.00	36.00	39.00	45.00	49.00	53.00	55.00	60.00	68.00	in
L2 (RTJ)	9.12	10.12	11.75	12.62	16.50	17.12	18.62	20.38	30.62	33.62	36.62	39.75	45.88	50.00	54.00	56.00	61.12	69.12	in
H (open)	16.12	17.88	20.00	24.00	31.75	39.38	47.62	55.75	62.25	67.88	77.12	86.38	102.00	117.00	122.00	126.00	130.00	152.00	in
Do	8	8	10	12	14	16	18	20	22	22	24	26	29	29	32	32	38	40	in
wt(kg)	23	35	50	71	144	209	322	482	683	950	1145	1635	2660	3090	3310	3595	3720	3985	RF
	17	26	39	53	113	164	256	390	565	805	965	1410	2305	2540	2725	3055	3360	3630	BW

Dimensional datas of ANSI Class 600#

NPS DN	2 50	2½ 65	3 80	4 100	6 150	8 200	10 250	12 300	14 350	16 400	18 450	20 500	24 600	26 650	28 700	30 750	32 800	36 900	in mm
L/L1 (RF/BW)	11.50	13.00	14.00	17.00	22.00	26.00	31.00	33.00	35.00	39.00	43.00	47.00	55.00	57.00	61.00	65.00	70.00	82.00	in
L2 (RTJ)	11.62	13.12	14.12	17.12	22.12	26.12	31.12	33.12	35.12	39.12	43.12	47.25	55.38	57.50	61.50	65.50	70.62	82.62	in
H (open)	16.50	18.75	20.38	25.50	33.00	40.38	48.38	57.00	62.00	70.62	76.00	87.00	101.50	105.00	109.50	114.00	124.00	140.00	in
Do	8	10	10	12	18	20	24	24	24	24	26	26	29	29	32	32	38	40	in
wt(kg)	36	52	67	112	170	393	610	890	1245	1530	1965	2450	2995	3475	3725	4045	4185	4480	RF
	29	42	53	83	125	310	472	730	1055	1240	1625	2030	2590	2855	3065	3440	3780	4085	BW

Dimensional datas of ANSI Class 900#

NPS DN	2 50	2½ 65	3 80	4 100	6 150	8 200	10 250	12 300	14 350	16 400	18 450	20 500	24 600	in mm
L/L1 (RF/BW)	14.50	16.50	15.00	18.00	24.00	29.00	33.00	38.00	40.50	44.50	48.00	52.00	61.00	in
L2 (RTJ)	14.62	16.62	15.12	18.12	24.12	29.12	33.12	38.12	40.88	44.88	48.50	52.50	61.75	in
H (open)	19.62	21.50	22.50	26.62	35.50	4.50	53.00	60.00	74.88	81.00	87.00	101.00	104.00	in
Do	10	10	12	18	20	24	26	29	32	32	38	38	40	in
wt(kg)	74	131	101	172	335	640	1100	1600	2250	2850	3060	3935	49.00	RF
	54	105	78	135	260	515	920	1380	2010	2565	3485	3250	4065	BW

Applicable standards:

- STEEL GATE VALVES API 600/API 6D
- STEEL GATE VALVES ISO 10434/ISO 14313
- STEEL VALVES, ASME B16.34
- FACE TO FACE, ASME B16.10
- END FLANGES, ASME B16.5
- BUTTWELDING ENDS, ASME B16.25
- INSPECTION AND TEST API 598/API 6D

Design descriptions:

- FULL PORT DESIGN
- OS&Y OUTSIDE SRCEW AND YOKE
- BB.BOLTED BONNET
- FLEXIBLE WEDGE, FULLY GUIDED
- CHOICE OF SOLID OR SPLIT WEDGE
- RENEWABLE SEAT RINGS
- FORGED T-HEAD STEM
- RISING STEM AND NON-RISING HANDWHEEL
- FLANGED OR BUTTWELDING ENDS
- AVAILABLE WITH BG OPERATOR

Dimensional datas of ANSI Class 1500#

NPS DN	2 50	2½ 65	3 80	4 100	6 150	8 200	10 250	12 300	14 350	16 400	18 450	20 500	24 600	in mm
L/L1 (RF/BW)	14.50 368	16.50 419	18.50 470	21.50 546	27.75 705	32.75 832	39.00 991	44.50 1130	49.50 1257	54.50 1384	60.50 1537	65.50 1664	76.50 1943	in mm
L2 (RTJ)	15.50 371	16.62 422	18.62 473	21.62 549	28.00 711	33.12 841	39.38 1000	45.12 1146	50.25 1276	55.38 1407	61.38 1559	66.38 1686	77.62 1972	in mm
H (open)	24.25 615	26.00 658	30.00 760	34.12 868	39.50 1005	45.00 1145	54.00 1370	61.00 1550	74.88 1900	80.50 2050	93.75 2380	101.50 2580	114.75 2915	in mm
Do	10 250	12 300	18 450	20 500	24 600	18 460	18 460	24 600	24 600	24 600	24 600	24 600	24 600	in mm
wt(kg)	116 105	166 150	209 188	296 265	510 412	920 760	1910 1640	3145 2755	4100 3200	6200 5300	8965 8070	13100 11790	15860 14275	RF BW

Dimensional datas of ANSI Class 2500#

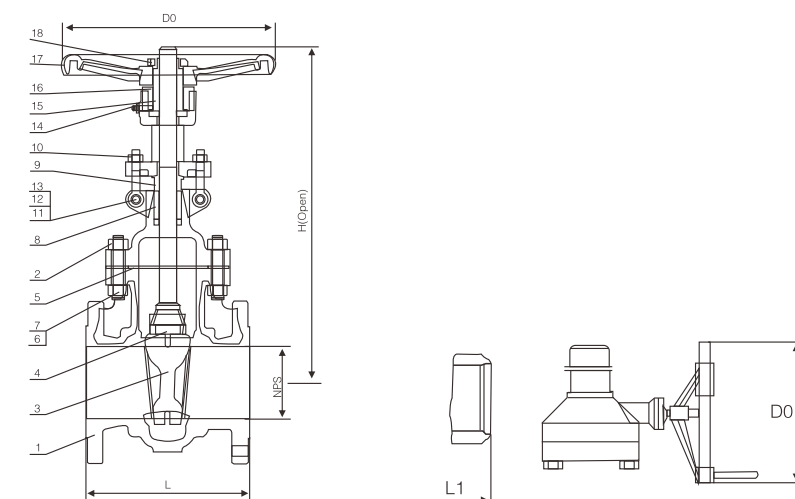
NPS DN	2 50	2½ 65	3 80	4 100	6 150	8 200	10 250	12 300	14 350	16 400	18 450	20 500	24 600	in mm
L/L1 (RF/BW)	17.75 451	20.00 508	22.75 578	26.50 673	36.00 914	40.25 1022	50.00 1270	56.00 1422	-	-	-	-	-	in mm
L2 (RTJ)	17.88 454	20.50 514	23.00 584	26.88 683	36.50 927	40.88 1038	50.88 1292	56.88 1445	-	-	-	-	-	in mm
H (open)	24.88 631	29.00 736	35.00 890	41.50 1055	57.00 1450	63.38 1610	81.75 2075	89.75 2280	-	-	-	-	-	in mm
Do	12 300	18 450	20 500	20 500	24 600	24 600	24 600	24 600	-	-	-	-	-	in mm
wt(kg)	155 124	210 160	310 245	580 460	1600 1310	2450 2010	4570 3800	7150 6000	-	-	-	-	-	RF BW

Applicable standards:

- STEEL GATE VALVES API 600/API6D
- STEEL GATE VALVES ISO 10434/ISO 14313
- STEEL VALVES, ASME B16.34
- FACE TO FACE, ASME B16.10
- END FLANGES, ASME B16.5
- BUTTWELDING ENDS, ASME B16.25
- INSPECTION AND TEST API 598/API 6D

Design descriptions:

- FULL PORT DESIGN
- OS&Y OUTSIDE SCREW AND YOKE
- BB, BOLTED BONNET
- FLEXIBLE WEDGE, FULLY GUIDED
- CHOICE OF SOLID OR SPLIT WEDGE
- RENEWABLE SEAT RINGS
- FORGED T-HEAD STEM
- RISING STEM AND NON-RISING HANDWHEEL
- FLANGED OR BUTTWELDING ENDS
- AVAILABLE WITH BG OPERATOR



Materials of parts

No	Part Name	ASTM Materials				
1	Body	A351-CF8	A351-CF8M	A351-CF3M	A351 CN7M	A890 4A
2	Bonnet	A351-CF8	A351-CF8M	A351-CF3M	A351 CN7M	A890 4A
3	Wedge	A351-CF8	A351-CF8M	A351-CF3M	A351 CN7M	A890 4A
4	Stem	A182-F304	A182-F316	A182-F316L	Alloy 20	A182 F51
5	Bonnet Gasket	Graphite+304	Graphite+316	Graphite+316L	316+Graphite	316+Graphite
6	Bonnet Stud	A193-B8	A193-B8M	A193-B8M	A193 -B8M	A193 -B8M
7	Bonnet Stud Nut	A194-8	A194-8M	A194-8M	A194 -8M	A194 -8M
8	Packing	Graphite				
9	Gland	A276-304	A276-316	A276-316L	Alloy 20	A182 F51
10	Gland Flange	A351-CF8	A351-CF8M	A351-CF8M	A351 CN7M	A890 4A
11	Eyebolt Pin	A276-304	A276-316	A276-316	A276 316	A276 316
12	Eyebolt	A193-B8	A193-B8	A193-B8	A193 -B8M	A193 -B8M
13	Eyebolt Nut	A194-8	A194-8	A194-8	A194 -8M	A194 -8M
14	Grease Fitting	Carbon steel Ni Plated				
15	Yokesleeve	Aluminum-Bronze				
16	Yokesleeve Jam Nut	A276-304				
17	Handwheel	Malleable Iron				
18	Handwheel Nut	Carbon Steel				

Note: 1) Spiral wound construction, teflon optional
 2) Teflon optional.
 3) Ductile Ni-resist optional.
 4) Wedge and seat (integral with body) may either be solid facing material or a base material equal to or better than the body/bonnet material with facing as shown.

Applicable standards:

- STEEL GATE VALVES, API 603
- STEEL VALVES, ASME B16.34
- FACE TO FACE, ASME B16.10
- END FLANGES, ASME B16.5
- BUTTWELDING ENDS, ASME B16.25
- INSPECTION AND TEST, API 598

Design descriptions:

- FULL PORT DESIGN
- OS&Y, OUTSIDE SCREW AND YOKE
- BB, BOLTED BONNET
- FLEXIBLE WEDGE, FULLY GUIDED
- CHOICE OF SOLID OR SPLIT WEDGE
- SEAT RINGS INTEGRAL WITH BODY
- FORGED T-HEAD STEM
- RISING STEM AND NON-RISING HAND WHEEL
- FLANGED OR BUTTWELDING ENDS
- AVAILABLE WITH BG OPERATOR

Dimensional datas of ANSI Class 150#

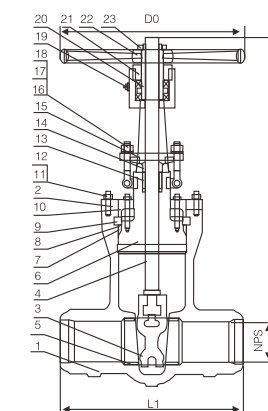
NPS DN	1/2 15	3/4 20	1 25	1 1/2 40	2 50	2 1/2 65	3 80	4 100	6 150	8 200	10 250	12 300	14 350	16 400	in mm
L (RF)	4.25 108	4.62 117	5.00 127	6.50 165	7.00 178	7.50 190	8.00 203	9.00 229	10.50 267	11.50 292	13.00 330	14.00 356	15.00 381	16.00 406	in mm
L1 (BW)	4.25 108	4.62 117	5.50 140	7.00 178	7.50 191	8.00 203	8.50 216	9.50 242	11.00 280	12.00 305	13.50 343	14.50 369	15.50 394	16.50 419	in mm
H (open)	8.25 210	8.50 215	9.25 235	11.75 300	15.25 386	17.00 434	18.88 480	23.00 584	30.50 765	37.62 956	45.50 1149	53.12 1350	59.38 1508	67.00 1703	in mm
D0	4 100	4 100	6 140	6 140	8 200	8 200	10 250	12 300	12 300	14 350	16 400	18 450	20 500	22 550	in mm
WT(kg)	3 2.5	3.5 3	5.5 4	9.2 8	15 12.5	21 15	27 21.5	42 34	64.5 58	101 90	149 130.5	221 207	303 275	387 355	BW RF/RTJ

Dimensional datas of ANSI Class 300#

NPS DN	1/2 15	3/4 20	1 25	1 1/2 40	2 50	2 1/2 65	3 80	4 100	6 150	8 200	10 250	12 300	14 350	16 400	in mm
L/L1 (RF/BW)	5.50 140	6.00 152	6.50 165	7.50 190	8.50 216	9.50 241	11.12 283	12.00 305	15.88 403	16.50 419	18.00 457	19.75 502	30.00 762	33.00 838	in mm
L2 (RTJ)	-	-	-	-	9.12 232	10.12 257	11.75 298	12.62 321	16.50 419	17.12 435	18.62 473	20.38 518	30.62 778	33.62 854	in mm
H (open)	6.34 161	6.42 163	7.72 196	9.88 251	16.12 410	17.88 453	20.00 509	24.00 612	31.75 805	39.38 1000	47.62 1210	55.75 1415	62.25 1580	67.88 1725	in mm
D0	4 100	4 100	6 140	6 140	8 200	8 200	10 250	10 250	14 350	16 400	18 450	20 500	22 550	22 550	in mm
WT(kg)	3.3 2.7	4 3.5	6.5 4.7	10.5 8.5	20 14.5	30 22.5	43 33	61 45.5	123 97	179 140	276 219	413 334	585 484	813 689	BW RF/RTJ

Dimensional datas of ANSI Class 600#

NPS DN	1/2 15	3/4 20	1 25	1 1/2 40	2 50	2 1/2 65	3 80	4 100	6 150	8 200	10 250	12 300	14 350	16 400	in mm
L (RF)	6.50 165	7.50 190	8.50 216	9.50 241	11.50 292	13.00 330	14.00 356	17.00 432	22.00 559	26.00 660	31.00 787	33.00 838	35.00 889	39.00 991	in mm
L1 (BW)	-	-	-	-	11.62 295	13.12 333	14.12 359	17.12 435	22.12 562	26.12 664	31.12 791	33.12 841	35.12 892	39.12 994	in mm
H (open)	6.34 161	6.42 163	7.72 196	9.88 251	16.50 418	18.76 476	20.38 518	25.50 646	33.00 840	40.38 1025	48.38 1230	57.00 1450	62.00 1575	70.62 1795	in mm
D0	4 100	6 140	6 140	8 200	8 200	10 250	10 250	12 300	18 450	20 500	24 600	24 600	24 600	24 600	in mm
WT(kg)	4.5 3.7	5.5 4.2	8.5 6.5	16.5 9.5	32 26	46 37	59 47	99 74	151 111	348 275	540 418	789 647	1103 935	1359 1098	BW RF/RTJ



Materials of parts

No	Part Name	ASTM Materials				
1	Body	A216-WCB	A217-WC6	A351-CF8M	A351 CN7M	A890 4A
2	Yoke bonnet	A216-WCB	A217-WC6	A351-CF8M	A351 CN7M	A890 4A
3	Wedge	A216-WCB+HF	A217-WC6+HF	A351-CF8M+HF	A351 CN7M	A890 4A
4	Stem	A182-F6a	CR-MO-V	A182-316	Alloy 20	A182 F51
5	Seat Ring	A105+HF	A182-F11+HF	A240-316+HF	Alloy 20	A182 F51
6	Bonnet Basket	A105	A182-F11	A240-316	Alloy 20	A182 F51
7	Bonnet Gasket	Steel Ring	304SS RING	316SS RING	316+Graphite	316+Graphite
8	Adapter Ring	Carbon Steel	A276-420	A276-316	Alloy	A182 F51
9	Retainer	Carbon Steel	A276-420	A276-316	Alloy	A182 F51
10	Yoke Cap	Carbon Steel	Alloy Steel	Stainless Steel	Alloy	A182 F51
11	Bonnet Stud	A193-B7	A193-B16	A193-B8M	A193 -B8M	A193 -B8M
12	Bonnet Stud Nut	A194-2H	A194-7	A194-8M	A194 -8M	A194 -8M
13	Packing	Graphite				
14	Gland	A276-420	A276-304	A276-316L	Alloy 20	A182 F51
15	Gland Flange	A216-WCB	A217-WC6	A351-CF8M	A351 CN7M	A890 4A
16	Eyebolt Pin	Carbon Steel	A276-420	A276-316	A276 316	A276 316
17	Eyebolt	Carbon Steel	A193-B7	A193-B8	A193 -B8M	A193 -B8M
18	Eyebolt Nut	Carbon Steel	A194-2H	A194-8	A194 -8M	A194 -8M
19	Grease Fitting	Brass+Steel				
20	Yokesleeve	Aluminum-Bronze				
21	Yokesleeve Jam Nut	Carbon Steel				Stainless Steel
22	Handwheel	Malleable Iron				
23	Handwheel Nut	Carbon steel				

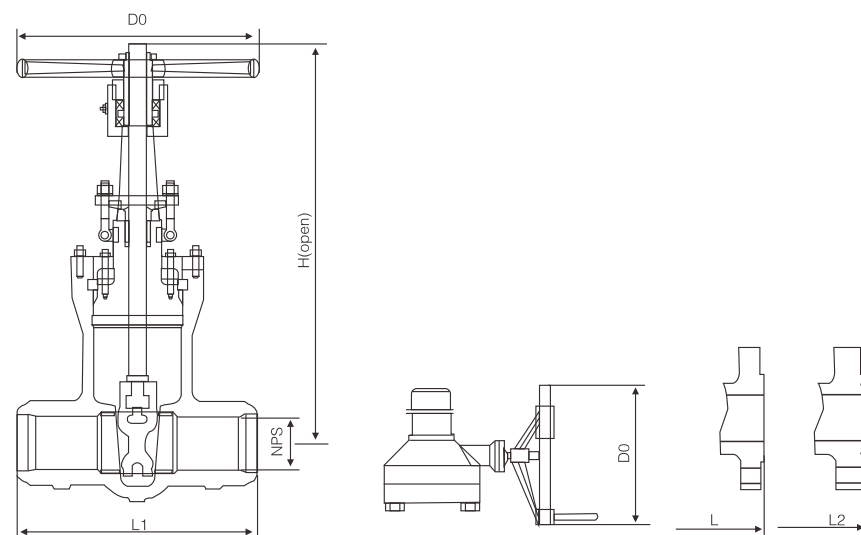
Note: 1) Graphite optional
 2) Ductile Ni-resist optional
 3) Wedge and seat ring may either be solid facing material or a base material equal to or better than the body/bonnet material with facing as shown.

Applicable standards:

- STEEL GATE VALVES, API 600/API 6D
- STEEL GATE VALVES, ISO 10434/ISO 14313
- STEEL VALVES, ASME B16.34
- FACE TO FACE, ASME B16.10
- END FLANGES ASME B16.5
- BUTTWELDING ENDS, ASME B16.25
- INSPECTION AND TEST, API 598/API 6D

Design descriptions:

- PSB, PRESSURE SEAL BONNET
- FLEXIBLE WEDGE, FULLY GUIDED
- CHOICE OF SOLID OR SPLIT WEDGE
- RENEWABLE SEAT RINGS
- FORGED T-HEAD STEM
- RISING STEM AND NON-RISING HANDWHEEL
- FLANGED OR BUTTWELDING ENDS
- AVAILABLE WITH BG OPERATOR

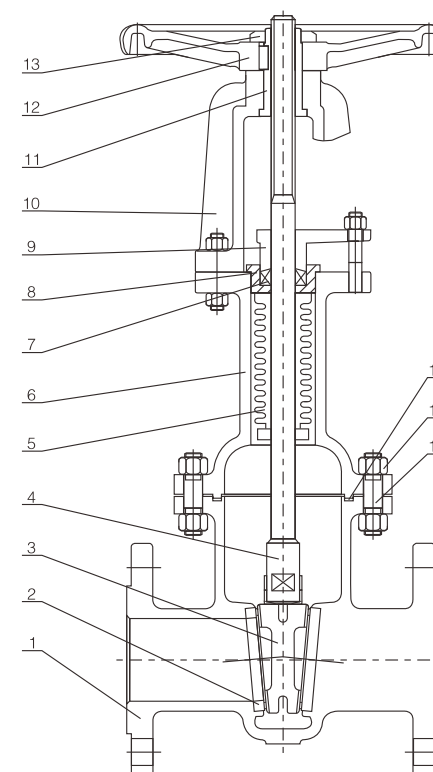


Dimensional datas

NPS DN	2 50	2½ 65	3 80	4 100	6 150	8 200	10 250	12 300	14 350	16 400	in mm
ANSI Class 900#											
L1 (BW)	8.50	10.00	12.00	14.00	20.00	26.00	31.00	36.00	39.00	43.00	in
	216	254	305	356	508	660	787	914	991	1092	mm
L (RF)	14.50	165.50	15.00	18.00	24.00	29.00	33.00	38.00	40.50	44.50	in
	368	419	381	457	610	737	838	965	1029	1130	mm
L2 (RTJ)	14.62	16.62	15.12	18.12	24.12	29.12	33.12	38.12	40.88	44.88	in
	371	422	384	460	613	740	841	968	1038	1140	mm
H (open)	17.62	17.62	19.5	22.88	32.62	67362	45.5	53.12	59	70.5	in
	448	448	495	580	830	955	1165	1350	1500	1790	mm
D0	14	14	14	14	18	24	28	34	34	34	in
	350	350	350	350	450	600	700	850	850	850	mm
WT(kg)	39	39	48	69	158	289	482	710	998	1390	BW
	69	69	72	110	253	430	710	1025	1452	1960	RF/RTJ

Dimensional datas

NPS DN	2 50	2½ 65	3 80	4 100	6 150	8 200	10 250	12 300	14 350	16 400	in mm
ANSI Class 1500#											
L1 (BW)	8.50	10.00	12.00	16.00	22.00	28.00	34.00	39.00	42.00	47.00	in
	216	254	305	406	559	711	864	991	1067	1194	mm
L (RF)	14.50	16.50	18.50	21.50	27.75	32.75	39.00	44.50	49.50	54.050	in
	368	419	470	546	705	832	991	1130	1257	1384	mm
L2 (RTJ)	15.50	16.62	18.62	21.62	28.00	33.12	39.38	45.12	50.25	55.38	in
	371	422	473	549	711	841	1000	1146	1276	1407	mm
H (open)	17.62	17.62	21.62	25.25	33.5	38.62	46.5	62.25	70.5	78	in
	448	448	550	640	850	980	1180	1580	1790	1980	mm
D0	14	14	14	18	24	28	34	34	34	34	in
	350	350	350	450	600	700	850	850	850	850	mm
WT(kg)	45	45	55	77	175	323	540	795	1115	1556	BW
	80	80	95	123	283	481	795	1148	1626	2195	RF/RTJ
ANSI Class 2500#											
L1 (BW)	11.00	13.00	14.50	18.00	24.00	30.00	36.00	41.00	-	-	in
	279	330	368	457	610	762	914	1041	-	-	mm
L (RF)	17.75	20.00	22.75	26.50	36.00	40.25	50.00	56.00	-	-	in
	451	508	578	673	914	1022	1270	1422	-	-	mm
L2 (RTJ)	17.88	20.50	23.00	26.88	36.50	40.88	50.88	56.88	-	-	in
	454	514	584	683	927	1038	1292	1445	-	-	mm
H (open)	22.5	22.5	25.62	30	36.62	41.38	44.88	60.25	-	-	in
	570	570	650	760	930	1050	1140	1530	-	-	mm
D0	14	14	18	24	28	34	34	34	-	-	in
	350	350	450	600	700	850	850	850	-	-	mm
WT(kg)	110	110	150	175	380	575	980	1570	-	-	BW
	165	195	235	316	635	910	1780	2680	-	-	RF/RTJ



No	Part Name	No	Part Name
1	Body	9	Gland Flange
2	Seat	10	Yoke
3	Disc	11	Stem Nut
4	Stem	12	Handwheel
5	Bellows	13	Locknut
6	Bonnet	14	Bolt
7	Packings	15	Nut
8	Gland	16	Gasket

Materials of parts

Body	GS-C25/WCB/CF8M/CF8/CF3M/CF3/CD3MN
Seat	A105/F316/F304/F316L/F304L/F51
Disc	GS-C25/WCB/CF8M/CF8/CF3M/CF3/CD3MN
Bellows	304/316/316L/304L/S31803
Stem	F6a/F304/F316/F304L/F316L/F51/Monel
Bonnet	GS-C25/WCB/CF8M/CF8/CF3M/CF3/CD3MN
Bolt	B7M/B8M/L7M/B16M
Nut	2HM/8M/7M/4M
Gland	410/304/316/304L/316L
Stem Nut	C95200/D2/A536
Gasket	Flexible graphite+304/Flexible graphite+316
Packings	Flexible graphite

Materials can be altered according to the customers' requirement and valves' performances.

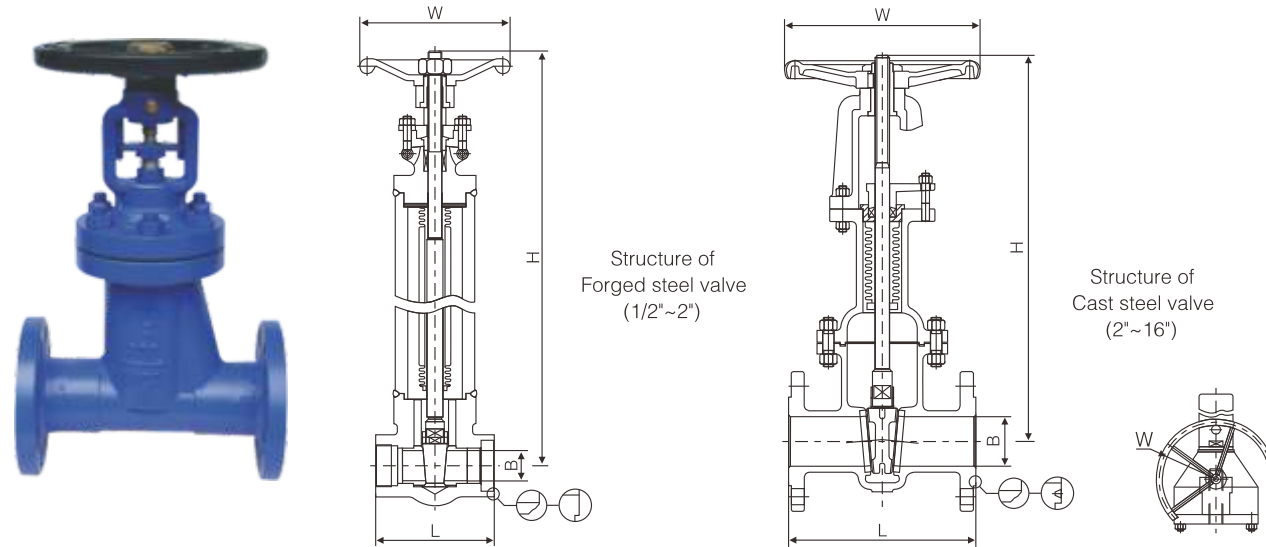
Product Features:

Bellows globe valve adopts sealed structure. In common valves, the packing seal of the stem ages fast and it is easy to leak, but this design totally eliminates these shortcomings. Apart from increasing the efficiency of materials and the safety of production equipment, it not only reduces maintenance costs and frequent maintenance of products but also provides a clean and safe working environment.

Double seal design (bellows and packings), if the bellows invalidates, the stem packings will prevent outside leaking. There are no fluid loss, but it reduces the energy loss and improves the equipment safety. Longer service life, less maintenance and lower operating costs. Firm and durable seal design of bellows ensures the zero leakage of stem and provides more reliable performance and no maintenance. Quenched stem and surface nitridation with good performance of corrosion and friction resistance. Excellent performance, graceful outline, and more visibility with position indicating of stem.

Applicable Standards:

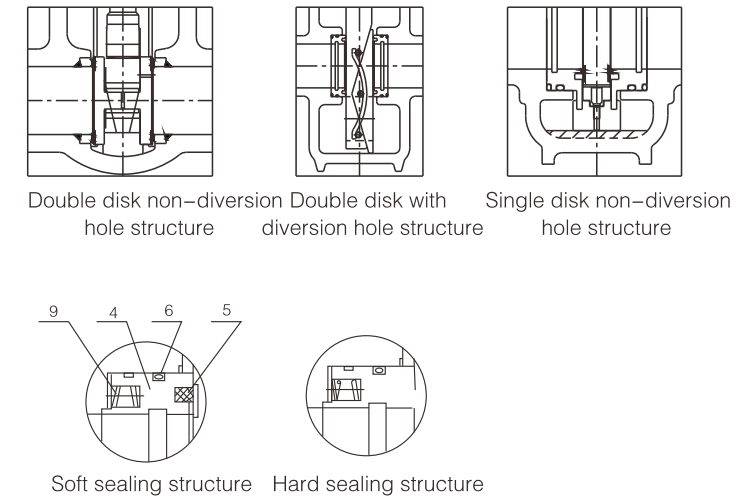
- DESIGN AND MANUFACTURE ON THE BASIS OF API 600、ASME B16.34
- CONNECTION SIZE ON THE BASIS OF ASME B16.5、EN 1092
- STRUCTURAL DIMENSION ON THE BASIS OF ASME B16.10、EN 588-1、DIN 3202
- TEST AND INSPECTION ON THE BASIS OF ISO 5208、API 598、EN 12266



Main Dimensional Parameter

Class 150#															
NPS	DN	L	B	H	W	WT	T	NPS	DN	L	B	H	W	WT	T
		mm	mm	mm	mm	Kg	N.M			mm	mm	mm	mm	Kg	N.M
1/2	15	79	10	200	100	7	13	3	80	203	76	444	250	53	36
3/4	20	92	13	212	120	8	17	4	100	229	102	492	280	68	65
1	25	111	18	248	125	9	22	6	150	267	152	585	300	142	88
1/4	32	120	24	263	160	13	25	8	200	292	201	677	350	188	155
1/2	40	120	29	290	160	20	27	10	250	330	252	766	400	255	205
2	50	178	51	375	200	29	31	12	★300	356	303	845	450	355	319
2/2	65	190	65	400	220	40	32	14	★350	381	337	903	500	420	369
Class 300#															
NPS	DN	L	B	H	W	WT	T	NPS	DN	L	B	H	W	WT	T
		mm	mm	mm	mm	Kg	N.M			mm	mm	mm	mm	Kg	N.M
1/2	15	79	10	200	100	7	14	3	80	203	76	444	250	78	52
3/4	20	92	13	212	120	8	18	4	100	229	102	492	280	95	103
1	25	111	18	248	125	9	25	6	150	267	152	585	350	185	209
1/4	32	120	24	263	160	13	28	8	200	292	201	677	400	230	311
1/2	40	120	29	290	160	20	36	10	250	330	252	766	450	360	524
2	50	178	51	375	200	40	40	12	★300	356	303	845	500	480	706
2/2	65	190	65	400	220	56	45	14	★350	381	337	903	560	705	1031
Class 600#															
NPS	DN	L	B	H	W	WT	T	NPS	DN	L	B	H	W	WT	T
		mm	mm	mm	mm	Kg	N.M			mm	mm	mm	mm	Kg	N.M
1/2	15	79	10	200	100	7	17	3	80	203	76	444	280	90	122
3/4	20	92	13	212	120	8	22	4	100	229	102	492	350	130	166
1	25	111	18	248	125	9	28	6	150	267	152	585	450	290	446
1/4	32	120	24	263	160	13	32	8	200	292	201	677	560	480	659
1/2	40	120	29	290	160	20	49	10	250	330	252	766	600	750	1168
2	50	178	51	375	250	52	56	★12	★300	356	303	845	460	920	1586
2/2	65	190	65	400	250	71	95	★14	★350	381	337	903	460	1120	2412

Instruction: ★ Means that it is operated by wormwheel.



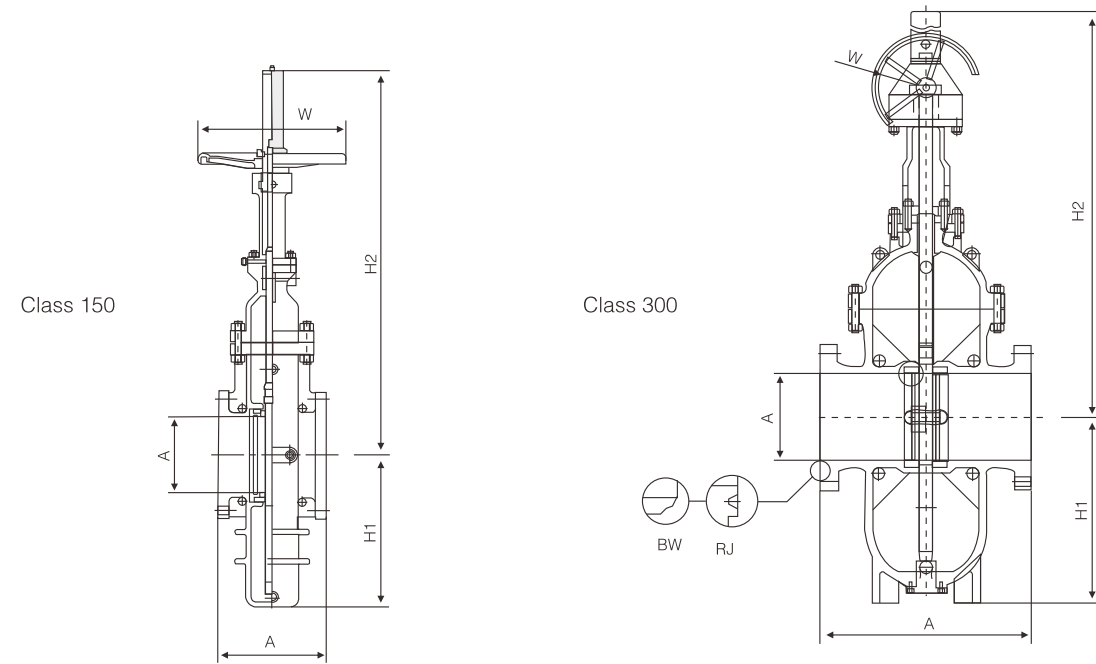
Materials of parts

Body	WCB/LCB/CF8M/CF8/CF3M/CF3/WC6/WC9/CD3MN
Bonnet	WCB/LCB/CF8M/CF8/CF3M/CF3/WC6/WC9/CD3MN
Disc	A105+ENP/LF2+ENP/F304/F316/F304L/F316L/F51
Seat	A105+ENP/LF2+ENP/F304/F316/F304L/F316L/F51
Stem	F6a/F304/F316/F304L/F316L/F51
Seal ring	PTFE/NYLON/PEEK/TEFLON
Sealing surface material	1-12 Trim material
O-ring	VITON/NBR
Bolt	B7M/B8M/L7M/B16M
Nut	2HM/8M/7M/4M
Spring	17-4PH/Inconel
Stem nut	C95200/D2/A536
Gasket	Flexible graphite+304/Flexible graphite+316
Packing	Flexible graphite/PTFE

Materials could be choosed according to customers' requirement & working condition.

Applicable Standards:

- DESIGN & MANUFACTURE CONFORM WITH: API 6D ASME B16.34
- CONNECTION DIMENSION CONFORMS WITH: ASME B16.5 DIN EN 1092
- FIRE RESISTANCE DESIGN CONFORMS WITH: API 607/ISO 10497
- INSPECTION & TEST CONFORMS WITH: API 6D, ISO 5208, API 598
- MATERIAL CONFORMS WITH: ISO 15156



Dimensional datas

NPS inch	DN	A mm	B mm	H1 mm	H2 mm	W mm	WT kg	T N.m	NPS inch	DN	A mm	B mm	H1 mm	H2 mm	W mm	WT kg	T N.m
ANSI Class 150#																	
2	50	178	51	125	452	200	25	23	16	400	406	385	685	1854	560	630	572
3	80	203	76	175	605	250	43	50	18	450	432	436	790	2088	650	836	728
4	100	229	100	202	680	280	65	60	★20	500	457	487	880	2420	460	1190	910
6	150	267	150	282	890	300	95	78	★24	600	508	589	1050	2688	460	1580	1313
8	200	292	201	355	1128	350	146	143	★28	700	610	684	1192	3078	460	2400	2028
10	250	330	252	445	1296	400	245	211	★30	750	610	735	1268	3252	600	3200	2305
12	300	356	303	518	1483	450	343	289	★32	800	711	779	1355	3495	600	3700	2795
14	350	381	334	606	1668	500	480	403	★36	900	711	874	1515	3898	600	4600	3783

Dimensional datas

NPS inch	DN	A mm	B mm	H1 mm	H2 mm	W mm	WT kg	T N.m	NPS inch	DN	A mm	B mm	H1 mm	H2 mm	W mm	WT kg	T N.m
ANSI Class 300#																	
2	50	292	51	135	456	200	30	25	16	400	902	385	730	1884	650	1280	735
3	80	356	76	182	618	250	48	71	★18	450	978	436	802	2163	460	1665	988
4	100	406	100	216	713	280	78	95	★20	500	1054	487	935	2420	460	2168	1235
6	150	495	150	315	903	350	152	117	★24	600	1232	589	1103	2810	460	2980	1963
8	200	597	201	382	1133	400	240	185	★28	700	1397	684	1262	3203	460	4060	2990
10	250	673	252	480	1403	450	420	292	★30	750	1524	735	1342	3412	600	4980	3566
12	300	762	303	545	1582	500	525	366	★32	800	1651	779	1422	3646	600	5800	4121
14	350	826	334	645	1688	560	810	576	★36	900	1880	874	1513	4055	600	7790	5785

Note: ★ Worm-gear actuator

Dimensional datas

NPS inch	DN	A mm	B mm	H1 mm	H2 mm	W mm	WT kg	T N.m	NPS inch	DN	A mm	B mm	H1 mm	H2 mm	W mm	WT kg	T N.m
ANSI Class 600#																	
2	50	292	51	160	466	250	60	32	★14	350	889	334	654	1745	460	1680	1453
3	80	356	76	228	622	280	106	117	★16	400	991	385	740	1978	460	2230	2103
4	100	432	100	258	724	350	160	169	★18	450	1092	436	812	2268	600	2700	2808
6	150	559	150	332	913	450	395	234	★20	500	1194	487	1040	2509	600	3100	3653
8	200	660	201	411	1148	560	605	319	★24	600	1397	589	1160	2820	600	5100	4953
10	250	787	252	493	1412	600	960	737	★28	700	1549	684	1288	3233	1000	7050	6253
12	300	838	303	577	1596	650	1520	1274	★30	750	1651	735	1330	3442	1000	8200	7163

Dimensional datas

NPS inch	DN	A mm	B mm	H1 mm	H2 mm	W mm	WT kg	T N.m	NPS inch	DN	A mm	B mm	H1 mm	H2 mm	W mm	WT kg	T N.m
ANSI Class 900#																	
2	50	368	49	162	476	300	133	71	12	300	965	303	577	1600	460	1850	1296
3	80	381	74	230	638	350	198	150	14	350	1029	322	660	1755	460	2580	1482
4	100	457	100	262	730	400	260	181	16	400	1130	373	750	2028	600	3500	2139
6	150	610	150	336	920	560	565	413	18	450	1219	423	822	2288	600	4400	2919
8	200	737	201	415	1152	600	965	767	20	500	1321	471	1058	2525	600	5560	4486
★10	250	838	252	496	1418	460	1280	1021	24	600	1549	589	1176	2850	1000	7480	5195

Dimensional datas

NPS inch	DN	A mm	B mm	H1 mm	H2 mm	W mm	WT kg	T N.m	NPS inch	DN	A mm	B mm	H1 mm	H2 mm	W mm	WT kg	T N.m
ANSI Class 1500Lb																	
2	50	368	49	162	476	300	133	107	★6	150	705	144	338	930	460	830	618
3	80	470	74	230	638	400	235	225	★8	200	832	192	420	1160	460	1380	1151
4	100	546	100	270	745	500	398	272	★10	250	991	239	500	1428	460	2230	1532

Note: ★ Turbine drives

Applicable Standards:

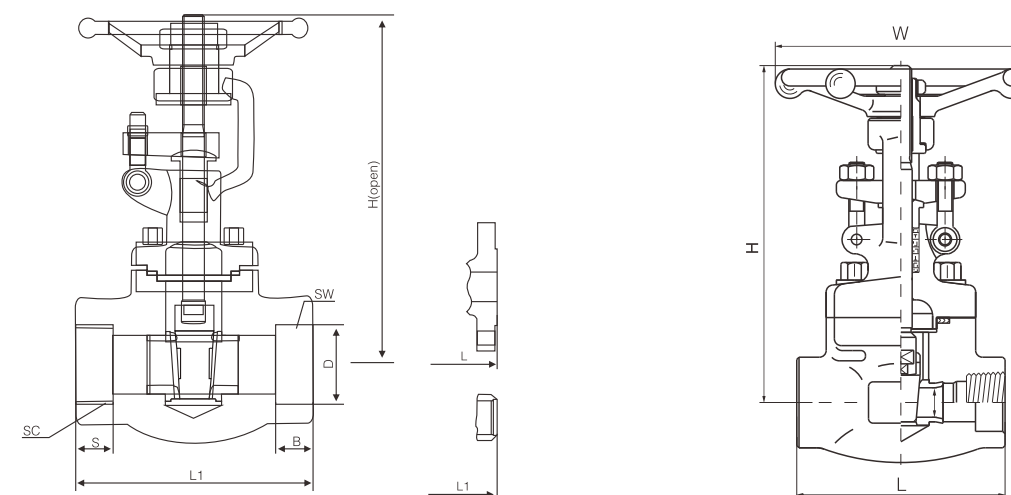
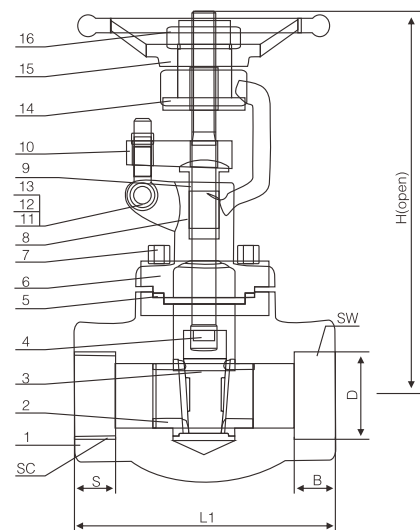
- DESIGN & MANUFACTURE CONFORM WITH: API 6D/ISO 14313, ASME B16.34
- CONNECTION DIMENSION CONFORMS WITH: ASME B16.5 DIN EN 1092
- FIRE RESISTANCE DESIGN CONFORMS WITH: API 607/ISO 10497
- INSPECTION & TEST CONFORMS WITH: API 6D, ISO 5208, API 598
- MATERIAL CONFORMS WITH: ISO 15156



Materials of parts

No	Part Name	ASTM Materials		
1	Body	A105	A182-F316	A182-F11
2	Bonnet	A105	A182-F316	A182-F11
3	Wedge	A182-F6a	A182-F316	A182-F6a+HF
4	Stem	A276-410	A276-316	A276-410
5	Seat Ring	A276-410	A182-F316	A276-410+HF
6	Bonnet Gasket ¹⁾	Graphite+304	Graphite+316	Graphite+304
7	Bonnet Stud	A193-B7	A193-B8M	A193-B16
8	Packing	Graphite		
9	Gland	A276-410	A276-316	A276-410
10	Gland Flange	A105	A182-F316	A182-F11
11	Eyebolt Pin	A276-410	A276-316	A276-410
12	Eyebolt	A193-B7	A193-B8M	A193-B16
13	Eyebolt Nut	A194-2H	A194-8M	A194-2H
14	Yokesleeve	A276-410		
15	Handwheel	Malleable Iron		
16	Handwheel nut	Carbon Steel		

Note: 1) spiral wound construction



Dimensional datas

NPS DN	Unit	L1 ¹⁾	L(Flanged Ends)			d	SW		SC	H(open)	D0	WT ²⁾ (kg)	
			150#	300#	600#		D	B					
3/8	in	3.12	4.00	5.50	6.50	0.394	0.693	0.378	3/8	0.540	6.00	4.00	4.5/4
10	mm	79	102	140	165	10	17.6	9.6		13.6	151	100	
1/2	in	3.12	4.25	5.50	6.50	0.394	0.858	0.378	1/2	0.535	6.00	4.00	5.1/4
15	mm	79	108	140	165	10	21.8	9.6		13.6	151	100	
3/4	in	3.62	4.62	6.00	7.50	0.531	1.067	0.500	3/4	0.547	6.25	4.00	8.2/4.3
20	mm	92	117	152	190	13.5	27.1	12.7		13.9	158	100	
1	in	4.38	5.00	6.50	8.50	0.709	1.331	0.500	1	0.681	7.25	5.00	10.5/6.6
25	mm	111	127	165	216	18	33.8	12.7		17.3	185	125	
1 1/4	in	4.75	5.50	7.00	9.00	0.945	1.677	0.500	1 1/4	0.709	9.38	6.25	12.4/9.5
32	mm	120	140	178	229	24	42.6	12.7		18	239	160	
1 1/2	in	4.75	6.50	7.50	9.50	1.181	1.917	0.500	1 1/2	0.724	9.50	6.25	20.1/11
40	mm	120	165	190	241	30	48.7	12.7		18.4	243	160	
2	in	5.50	7.00	8.50	11.50	1.437	2.406	0.626	2	0.756	11.00	7.00	28/14.5
50	mm	140	178	216	292	36.5	61.1	15.9		19.2	279	180	

Notes: 1) BW, SW or SC.
2) 600#-RF/800#-(BW/SW/SC)

Applicable standards:

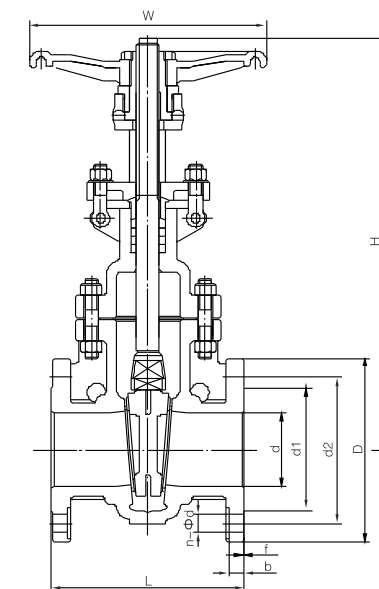
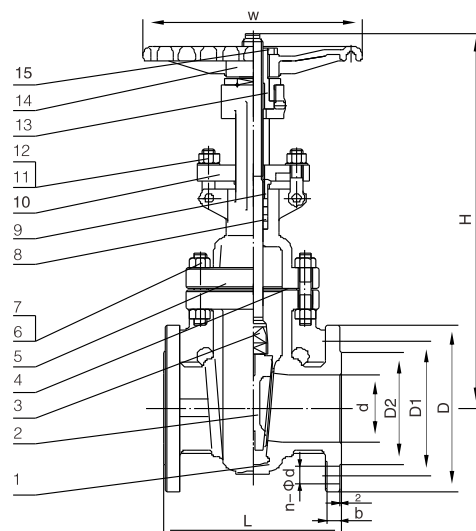
- STEEL GATE VALVES, API 602
- STEEL VALVES, ASME B16.34
- FACE TO FACE, MANUFACTURER STANDARD
- FACE TO FACE, FLANGED, ASME B16.10
- END FLANGES, ASME B16.5
- BUTTWELDING ENDS, ASME B16.25
- SOCKET-WELDING ENDS, ASME B16.11
- SCREWED ENDS, ASME B1.20.1
- INSPECTION AND TEST, API 598

Design descriptions:

- OUTSIDE SCREW AND YOKE (OS&Y)
- BOLTED BONNET
- CHOICE OF WB, WELDED BONNET
- SINGLE WEDGE, FULLY GUIDED
- RENEWABLE SEAT RINGS
- YOKE INTEGRAL WITH BONNET
- RISING STEM AND NON-RISING HANDWHEEL
- SW, SOCKET-WELDING ENDS
- SC, SCREWED ENDS
- BW, BUTTWELDING ENDS
- FLANGED ENDS

Dimensional datas

NPS	1/4	3/8	1/2	3/4	1	1 1/4	1 1/2	2	in
L	92	111	111	120	120	140	178	180	in
W	100	125	125	160	160	180	200	220	in
H	191	191	192	219	243	296	316	370	in
d	8	10.5	13.5	18	24	29	36.5	45	in
Weight(kg)	2.4	4.3	4.4	6	7.2	11.4	16	23	in



Materials of parts

No	Part Name	ASTM Materials				
1	Body	A216-WCB+Cr13	A217-WC6+HF	A352-LCB+Cr13	A351 CN7M	A890 4A
2	Wedge	A216-WCB+Cr13	A217-WC6+HF	A352-LCB+Cr13	A351 CN7M	A890 4A
3	Stem	A182-F6a	A182-F11	A182-F6a	Alloy 20	A182 F51
4	Bonnet Gasket	304+Graphite		316+Graphite		
5	Bonnet	A216-WCB	A217-WC6	A352-LCB	A351 CN7M	A890 4A
6	Bonnet Stud	A193-B7	A193-B16	A320-L7	A193 -B8M	A193 -B8M
7	Bonnet Stud Nut	A194 -2H	A194 -7	A194-4	A194 -8M	A194 -8M
8	Packing	Graphite				
9	Gland	A276 -420	A276 -420	A276 -420	Alloy 20	A182 F51
10	Gland Flange	A216-WCB	A217-WC6	A352-LCB	A351 CN7M	A890 4A
11	Eyebolt	A193-B7	A193-B16	A320-L7	A193 -B8M	A193 -B8M
12	Eyebolt Nut	A194 -2H	A194 -7	A194-4	A194 -8M	A194 -8M
13	Yokesleeve	Aluminum-Bronze				
14	Handwheel	Malleable				
15	Handwheel Nut	Carbon Steel				

Applicable Standards :

Face to Face Dimensions: EN558-1/DIN3202 F4

Flange end Dimension : EN1092-1/DIN2545

Design and Manufacture : EN 1984/DIN3352

Pressure Test : EN12266/DIN3230

Materials : WCB 、 WC6 、 WC9 、 CF8、 CF8M、 CF3、 CF3M 、 CN7M、 LC1

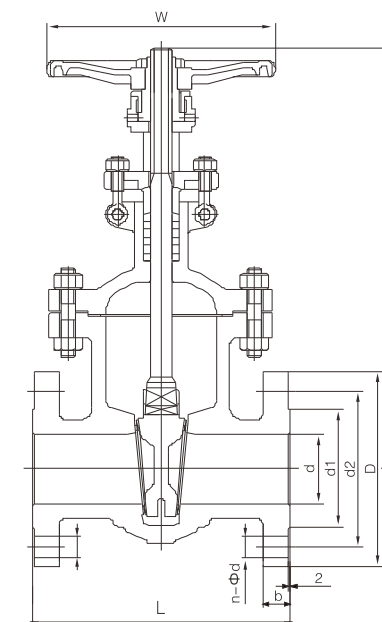
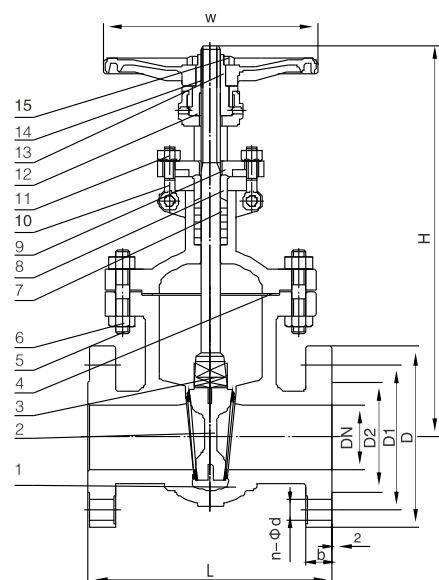
LC2、 LC3、 LCB、 LCC、 Monel、 20# Alloys、 4A、 5A

PN16

DN		50	65	80	100	125	150	200	250	300	350	400	450	500	600
d	mm	50	63	76	100	125	150	200	250	300	336	387	438	488	590
L(RF)	mm	250	270	280	300	325	350	400	450	500	550	600	650	700	800
d1	mm	102	122	138	158	188	212	268	320	378	438	490	550	610	725
d2	mm	125	145	160	180	210	240	295	355	410	470	525	586	650	770
D	mm	165	185	200	220	250	285	340	405	460	520	580	640	715	840
b	mm	18	18	20	20	22	22	24	26	28	30	32	40	44	54
f	mm	3	3	3	3	3	3	3	3	4	4	4	4	4	5
n-Φd	mm	4-18	8-18	8-18	8-18	8-18	8-22	12-22	12-26	12-26	16-26	16-30	20-30	20-33	20-36
H	mm	417	452	530	607	720	790	885	1014	1190	1350	1460	1630	1800	2200
W	mm	200	200	250	280	280	300	350	400	450	500	500	500	600	600

PN25

DN		50	65	80	100	125	150	200	250	300	350	400	450	500	600
d	mm	50	63	76	100	125	150	200	250	300	336	387	438	488	590
L(RF)	mm	250	270	280	300	325	350	400	450	500	550	600	650	700	800
d1	mm	102	122	138	162	188	218	278	335	395	450	505	555	615	720
d2	mm	125	145	160	190	220	250	310	370	430	490	550	600	660	770
D	mm	165	185	200	235	270	300	360	425	485	555	620	670	730	845
b	mm	20	22	24	24	28	28	30	32	34	38	40	46	48	58
f	mm	3	3	3	3	3	3	3	3	4	4	4	4	4	5
n-Φd	mm	4-18	8-18	8-18	8-22	8-26	8-26	12-26	12-30	16-30	16-33	16-36	20-36	20-36	20-39
H	mm	417	452	530	607	720	790	885	1014	1190	1350	1460	1630	1800	2200
W	mm	200	200	250	280	280	300	350	400	450	500	500	500	600	600



Materials of parts

No	Part Name	ASTM Materials				
1	Body	A216-WCB+Cr13	A217-WC6+HF	A352-LCB+Cr13	A351 CN7M	A890 4A
2	Wedge	A216-WCB+Cr13	A217-WC6+HF	A352-LCB+Cr13	A351 CN7M	A890 4A
3	Stem	A182-F6a	A182-F11	A182-F6a	Alloy 20	A182 F51
4	Bonnet Gasket	304+Graphite			316+Graphite	
5	Bonnet Stud	A193-B7	A193-B16	A320-L7	A193 -B8M	A193 -B8M
6	Bonnet Stud Nut	A194 -2H	A194 -7	A194-4	A194 -8M	A194 -8M
7	Packing	Graphite				
8	Gland	A276 -420	A276 -420	A276 -420	Alloy 20	A182 F51
9	Gland Flange	A216-WCB	A217-WC6	A352-LCB	A351 CN7M	A890 4A
10	Eyebolt	A193-B7	A193-B16	A320-L7	A193 -B8M	A193 -B8M
11	Eyebolt Nut	A194 -2H	A194 -7	A194-4	A194 -8M	A194 -8M
12	Bonnet	A216-WCB	A217-WC6	A352-LCB	A351 CN7M	A890 4A
13	Yokesleeve	Aluminum-Bronze				
14	Handwheel	Malleable				
15	Handwheel Nut	Carbon Steel				

Applicable Standards:

Face to Face Dimensions: EN558-1/DIN3202 F7

Flange end Dimension : EN1092-1/DIN2545

Design and Manufacture : EN 1984/DIN3352

Pressure Test : EN12266/DIN3230

Materials : WCB , WC6 , WC9 , CF8 , CF8M , CF3 , CF3M , CN7M , LC1

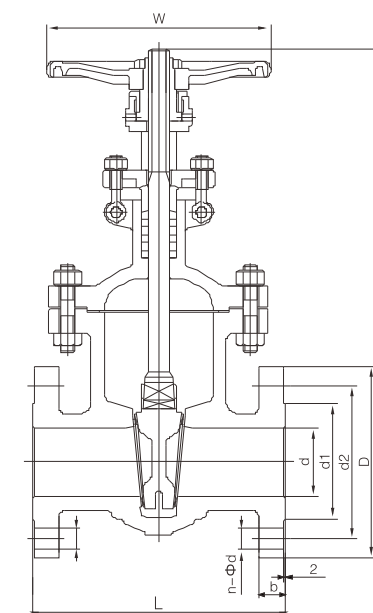
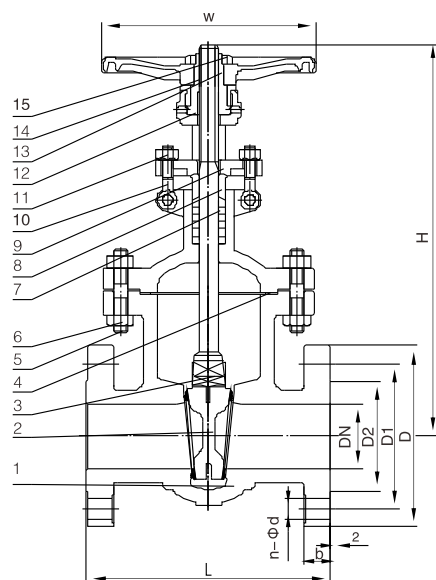
LC2 , LC3 , LCB , LCC , Monel , 20# Alloys , 4A , 5A , C95800 , C95500 , ect.

PN16

DN		50	65	80	100	125	150	200	250	300	350	400	450	500	600
d	mm	50	76	76	100	125	150	200	250	300	336	387	438	488	590
L(RF)	mm	250	280	280	300	325	350	400	450	500	550	600	650	700	800
d1	mm	102	138	138	158	188	212	268	320	378	438	490	550	610	725
d2	mm	125	160	160	180	210	240	295	355	410	470	525	586	650	770
D	mm	165	200	200	220	250	285	340	405	460	520	580	640	715	840
b	mm	18	20	20	20	22	22	24	26	28	30	32	40	44	54
n-Φd	mm	4-18	8-18	8-18	8-18	8-18	8-22	12-22	12-26	12-26	16-26	16-30	20-30	20-33	20-36
H	mm	417	530	530	607	720	790	885	1014	1190	1350	1460	1630	1800	2200
W	mm	200	250	250	280	280	300	350	400	450	500	500	500	600	600

PN25

DN		50	65	80	100	125	150	200	250	300	350	400	450	500	600
d	mm	50	63	76	100	125	150	200	250	300	336	387	438	488	590
L(RF)	mm	250	270	280	300	325	350	400	450	500	550	600	650	700	800
d1	mm	102	122	138	162	188	218	278	335	395	450	505	555	615	720
d2	mm	125	145	160	190	220	250	310	370	430	490	550	600	660	770
D	mm	165	185	200	235	270	300	360	425	485	555	620	670	730	845
b	mm	20	22	24	24	28	28	30	32	34	38	40	46	48	58
n-Φd	mm	4-18	8-18	8-18	8-22	8-26	8-26	12-26	12-30	16-30	16-33	16-36	20-36	20-36	20-39
H	mm	417	452	530	607	720	790	885	1014	1190	1350	1460	1630	1800	2200
W	mm	200	200	250	280	280	300	350	400	450	500	500	500	600	600



Materials of parts

No	Part Name	ASTM Materials				
1	Body	A216-WCB+Cr13	A217-WC6+HF	A352-LCB+Cr13	A351 CN7M	A890 4A
2	Wedge	A216-WCB+Cr13	A217-WC6+HF	A352-LCB+Cr13	A351 CN7M	A890 4A
3	Stem	A182-F6a	A182-F11	A182-F6a	Alloy 20	A182 F51
4	Bonnet Gasket	304+Graphite			316+Graphite	
5	Bonnet Stud	A193-B7	A193-B16	A320-L7	A193 -B8M	A193 -B8M
6	Bonnet Stud Nut	A194 -2H	A194 -7	A194-4	A194 -8M	A194 -8M
7	Packing	Graphite				
8	Gland	A276 -420	A276 -420	A276 -420	Alloy 20	A182 F51
9	Gland Flange	A216-WCB	A217-WC6	A352-LCB	A351 CN7M	A890 4A
10	Eyebolt	A193-B7	A193-B16	A320-L7	A193 -B8M	A193 -B8M
11	Eyebolt Nut	A194 -2H	A194 -7	A194-4	A194 -8M	A194 -8M
12	Bonnet	A216-WCB	A217-WC6	A352-LCB	A351 CN7M	A890 4A
13	Yokesleeve	Aluminum-Bronze				
14	Handwheel	Malleable				
15	Handwheel Nut	Carbon Steel				

Applicable Standards:

Face to Face Dimensions: EN558-1/DIN3202 F7

Flange end Dimension : EN1092-1/DIN2545

Design and Manufacture : EN 1984/DIN3352

Pressure Test : EN12266/DIN3230

Materials : WCB、WC6、WC9、CF8、CF8M、CF3、CF3M、CN7M、LC1

LC2、LC3、LCB、LCC、Monel、20# Alloys、4A、5A、C95800、C95500, ect.

PN40

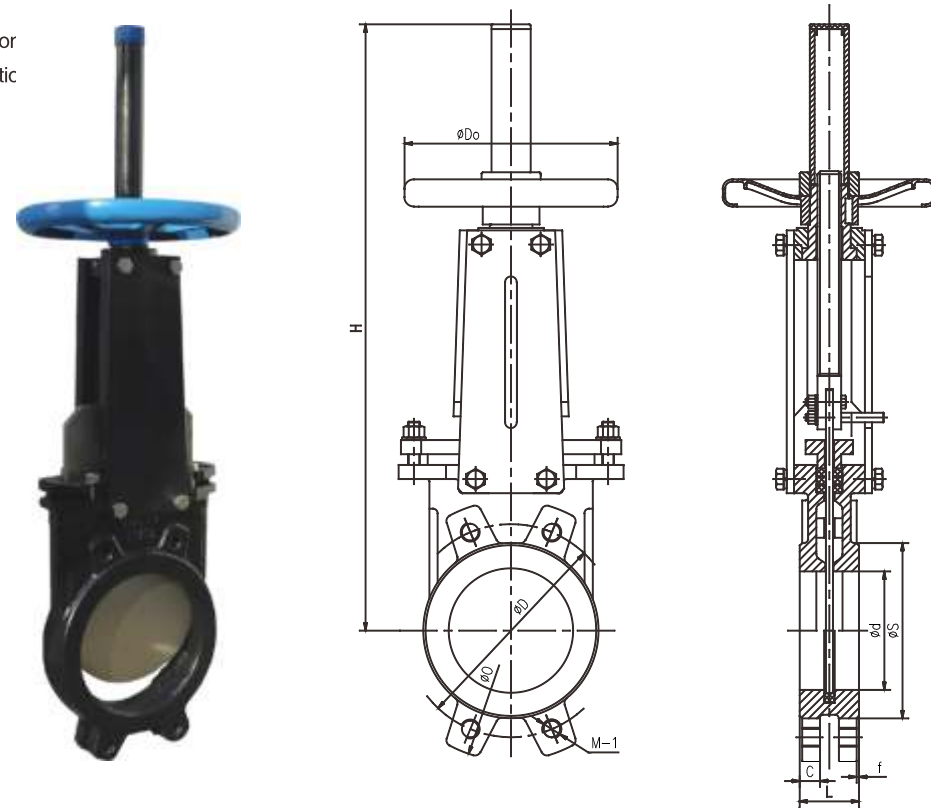
DN		50	65	80	100	125	150	200	250	300	350	400	450	500	600
d	mm	50	63	76	100	125	150	200	250	300	336	387	431	482	584
L(RF)	mm	250	290	310	350	400	450	550	650	750	850	950	1050	1150	1350
d1	mm	102	122	138	162	188	218	285	345	410	465	535	560	615	735
d2	mm	125	145	160	190	220	250	320	385	450	510	585	610	670	795
D	mm	165	185	200	235	270	300	375	460	515	580	660	685	755	890
b	mm	20	22	24	24	28	28	34	38	42	46	50	57	57	72
n-Φd	mm	4-18	8-18	8-18	8-22	8-26	8-26	12-30	12-33	16-33	16-36	16-39	20-39	20-42	20-48
H	mm	404	456	604	607	720	780	875	1260	1480	1605	1788	1956	2168	2601
W	mm	200	200	250	280	300	350	400	450	500	500	600	650	750	800

PN64

DN		50	65	80	100	125	150	200	250	300	350	400	500	600
d	mm	50	63	76	100	125	150	200	250	300	336	387	482	584
L(RF)	mm	250	290	310	350	400	450	550	650	750	850	950	1150	1350
d1	mm	102	122	138	162	188	218	285	345	410	465	535	615	735
d2	mm	135	160	170	200	240	280	345	400	460	525	585	705	820
D	mm	180	205	215	250	295	345	415	470	530	600	670	800	930
b	mm	26	26	28	30	34	36	42	48	52	56	60	68	76
n-Φd	mm	4-22	8-22	8-22	8-28	8-30	8-33	12-36	12-36	16-36	16-39	16-42	20-48	20-56
H	mm	404	456	604	607	720	780	875	1260	1480	1605	1788	2168	2601
W	mm	200	200	250	280	300	350	400	450	500	500	600	750	800

Products Range:

Pressure rate: PN10
 Size: DN50–DN1200
 Body material: Nodular cast iron
 Operated type: Manual operatic

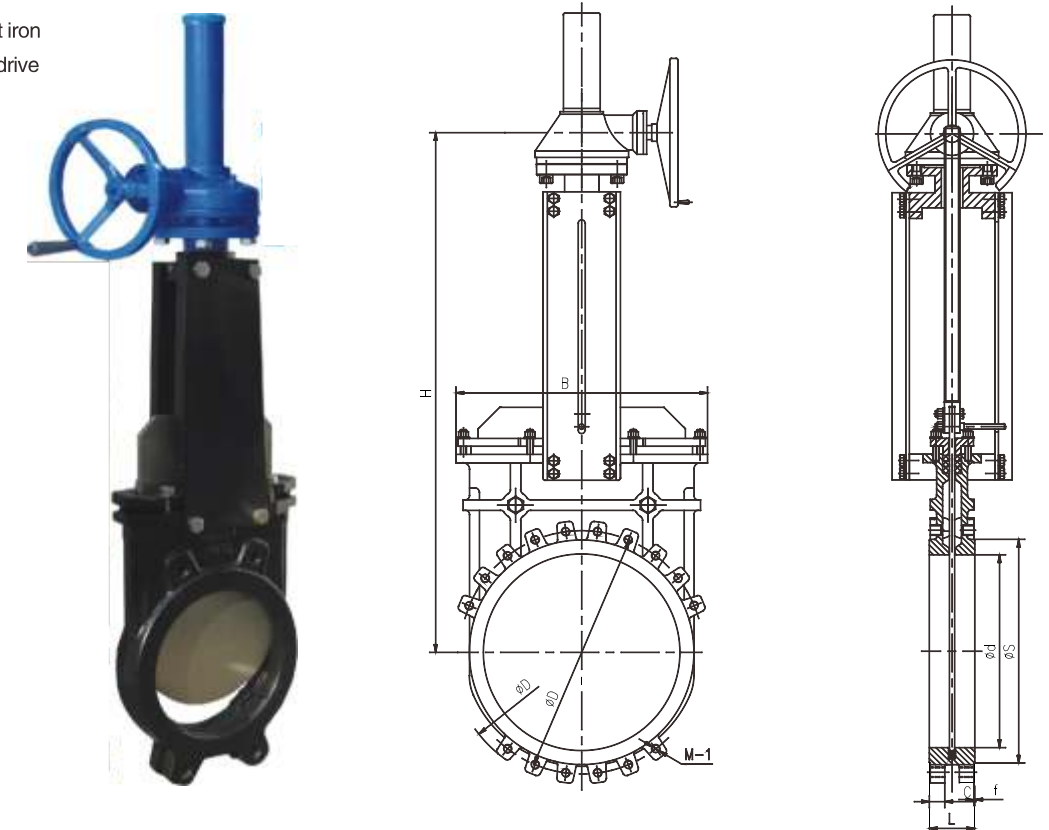


Dimensional datas

DN	L	O	D	S	C	f	M-1	B	H	Do	(KGS)
50	40	165	125	95	16	2	4-M16	136	375	180	7
65	40	185	145	110	16	2	4-M16	151	420	180	8
80	50	200	160	127	17	2	8-M16	170	450	200	11
100	50	220	180	148	17	2	8-M16	190	512	200	12
125	50	250	210	174	17	2	8-M16	212	570	220	15
150	60	285	240	199	21	2	8-M20	230	665	250	21
200	60	340	295	250	21	2	8-M20	286	825	300	29
250	70	395	350	308	24	2	12-M20	338	1000	350	46
300	70	445	400	360	24	2	12-M20	388	1155	350	66
350	96	505	460	416	33	2	16-M20	460	1310	400	92
400	100	565	515	46	35	2	16-M24	520	1475	500	125

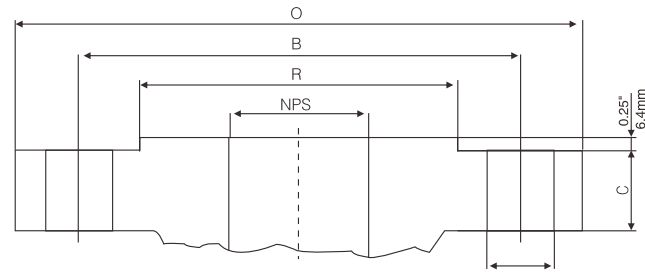
Products Range:

Pressure rate: PN10
 Size: DN450–DN1200
 Body material: Nodular cast iron
 Operated type: Bevel gear drive

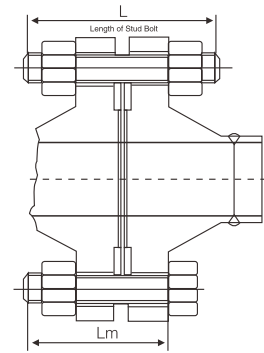


Dimensional datas

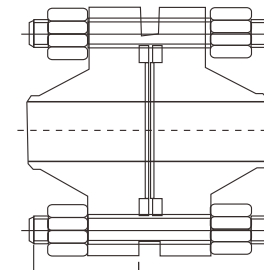
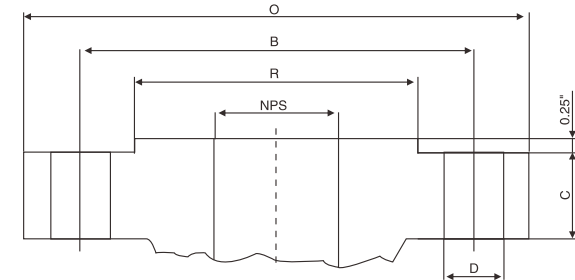
DN	L	O	D	S	C	f	M-1	B	H
450	106	615	565	525	36	2	20-M24	585	1170
500	110	670	620	574	37	2	20-M24	635	1280
600	110	780	725	664	37	2	20-M27	720	1485
700	110	895	840	1070	38	2	24-M27	807	1670
800	110	1015	950	955	38	2	24-M30	922	1880
900	110	1115	1050	955	38	2	28-M30	1030	2120
1000	110	1230	1160	1080	38	2	28-M33	1140	2270



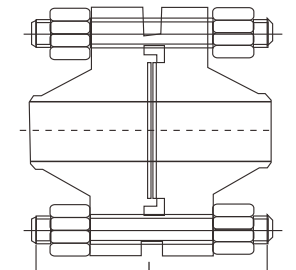
ANSI Class150Lb/300Lb
0.25"(6.4mm) Raised face joint



Length of Machine Bolt



ANSI Class600Lb/900Lb
0.25"(6.4mm) Raised face joint



ANSI Class600Lb/900Lb
Male & female

Class150#

NPS		O		C		R		B		D		Bolt		L		Lm	
in	mm	in	mm	in	mm	in	mm	in	mm	in	mm	QTY	Diam	in	mm	in	mm
2	50	6.00	152.4	0.75	19.1	3.62	91.9	4.75	120.7	0.75	19.1	4	5/8	3.25	82.6	2.75	69.9
2 1/2	65	7.00	177.8	0.88	2.4	4.12	104.6	5.50	139.7	0.75	19.1	4	5/8	3.50	88.9	3.00	76.2
3	80	7.50	190.5	0.94	23.9	5.00	127.0	6.00	152.4	0.75	19.1	4	5/8	3.50	88.9	3.00	76.2
4	100	9.00	228.6	0.94	23.9	6.19	157.2	7.50	190.5	0.75	19.1	8	5/8	3.50	88.9	3.00	76.2
5	25	10.00	254.0	0.94	23.9	7.31	185.7	8.50	215.9	0.88	22.4	8	3/4	3.75	95.3	3.25	82.6
6	150	11.00	279.4	1.00	25.4	8.50	215.9	9.50	241.3	0.88	22.4	8	3/4	4.00	101.6	3.25	8.6
8	200	13.50	342.9	1.12	28.4	10.62	269.7	11.75	298.5	0.88	22.4	8	3/4	4.25	108.0	3.50	88.9
10	250	16.00	406.4	1.19	30.2	12.75	323.9	14.25	362.0	1.00	25.4	12	7/8	4.50	114.3	4.00	101.6
12	300	19.00	482.6	1.25	31.8	15.00	381.0	17.00	431.8	1.00	25.4	12	7/8	4.75	120.7	4.00	101.6
14	350	21.00	533.4	1.38	35.1	16.25	412.8	18.75	476.3	1.12	28.4	12	1	5.25	133.4	4.50	114.3
16	400	23.50	596.9	1.44	36.6	18.50	469.9	21.25	539.8	1.12	28.4	16	1	5.25	133.4	4.50	114.3
18	450	25.00	635.0	1.56	39.6	21.00	533.4	22.75	577.9	1.25	31.8	16	1 1/8	5.75	146.1	5.00	127.0
20	500	27.50	698.5	1.69	42.9	23.00	584.2	25.00	635.0	1.25	31.8	20	1 1/8	6.25	158.8	5.50	139.7
24	600	32.00	812.88	1.88	47.8	27.25	692.2	39.50	749.3	1.38	35.1	20	1 1/4	6.75	171.5	6.00	152.4
26	650	34.25	870.0	2.69	68.3	29.50	749.3	31.75	806.5	1.38	35.1	24	1 1/4	8.25	209.6	7.50	190.5
28	700	36.50	927.1	2.81	71.4	31.50	800.1	34.00	863.6	1.38	35.1	28	1 1/4	8.50	215.9	7.75	196.9
30	750	38.75	984.3	2.94	74.7	33.75	857.3	36.00	914.4	1.38	35.1	28	1 1/4	9.00	228.6	8.00	203.2
32	800	41.75	1060.5	3.18	80.8	36.00	914.4	38.50	977.9	1.62	41.1	28	1 1/2	9.75	247.7	8.75	222.3
34	850	43.75	1111.3	3.25	82.6	38.00	965.2	40.50	1028.7	1.62	41.1	32	1 1/2	10.00	254.0	9.00	228.6
36	900	46.00	1168.4	3.56	90.4	40.25	1022.4	42.75	1085.9	1.62	41.1	32	1 1/2	10.50	266.7	9.50	241.3

Class300#

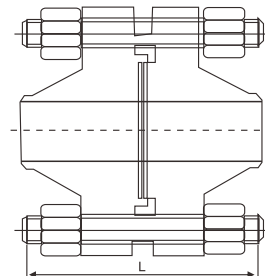
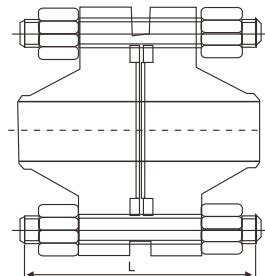
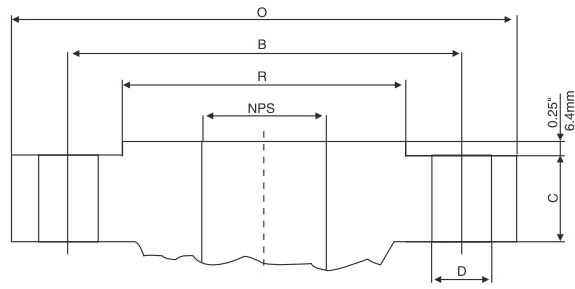
NPS		O		C		R		B		D		Bolt		L		Lm	
in	mm	in	mm	in	mm	in	mm	in	mm	in	mm	QTY	Diam	in	mm	in	mm
2	50	6.50	165.1	0.88	22.4	3.62	91.9	5.00	127.0	0.75	19.1	8	5/8	3.50	101.6	3.00	76.2
2 1/2	65	7.50	190.5	1.00	25.4	4.12	104.6	5.88	149.4	0.88	22.4	8	3/4	4.00	114.3	3.25	82.6
3	80	8.25	209.6	1.12	28.4	5.00	127.0	6.62	168.1	0.88	22.4	8	3/4	4.25	120.7	3.50	88.9
4	100	10.00	254.0	1.25	31.8	6.19	157.2	7.88	200.2	0.88	22.4	8	3/4	4.50	127.0	3.75	95.3
5	25	11.00	279.4	1.38	35.1	7.31	185.7	9.25	235.0	0.88	22.4	8	3/4	4.75	133.4	4.25	108.0
6	150	12.50	317.5	1.44	36.6	8.50	215.9	0.62	269.7	0.88	22.4	12	3/4	4.75	139.7	4.25	108.0
8	200	15.00	381.0	1.62	41.1	10.62	269.7	13.00	330.2	1.00	25.4	12	7/8	5.50	152.4	4.75	120.7
10	250	17.50	444.5	1.88	47.8	12.75	323.9	15.25	387.4	1.12	28.4	16	1	6.25	171.5	5.50	139.7
12	300	20.50	520.7	2.00	50.8	15.00	381.0	17.75	450.9	1.25	31.8	16	1 1/8	6.75	184.2	5.75	146.1
14	350	23.00	584.2	2.12	53.8	16.25	412.8	20.25	514.4	1.25	31.8	20	1 1/8	7.00	190.5	6.25	158.8
16	400	25.50	647.7	2.25	57.2	18.50	469.9	22.50	571.5	1.38	35.1	20	1 1/4	7.50	203.2	6.50	165.1
18	450	28.00	711.2	2.38	60.5	21.00	533.4	24.75	628.7	1.38	35.1	24	1 1/4	7.75	209.3	6.75	171.5
20	500	30.50	774.7	2.50	63.5	23.00	584.2	27.00	685.8	1.38	35.1	24	1 1/4	8.00	222.3	7.25	184.2
24	600	36.00	914.4	2.75	69.9	27.25	692.2	32.00	812.8	1.62	41.1	24	1 1/2	9.00	254.0	8.00	203.2
26	650	38.25	971.6	3.12	79.2	29.50	749.3	34.50	876.3	1.75	44.5	28	1 1/8	10.25	285.8	9.25	235.0
28	700	40.75	1035.1	3.38	85.9	31.50	800.1	37.00	939.8	1.75	44.5	28	1 1/8	10.75	298.5	9.75	247.7
30	750	43.00	1092.2	3.62	91.9	33.75	857.3	39.25	997.0	1.88	47.8	28	1 1/4	11.50	317.5	10.50	266.7
32	800	45.25	1149.4	3.88	98.6	36.00	914.4	41.50	1054.1	2.00	50.8	28	1 1/8	12.25	342.9	11.25	285.8
34	850	47.50	1206.5	4.00	101.6	38.00	965.2	43.50	1104.9	2.00	50.8	28	1 1/8	12.75	349.3	11.75	298.5
36	900	50.00	1270.0	4.12	104.6	40.25	1022.4	46.00	1168.4	2.12	53.8	32	2	13.25	362.0	12.25	311.2

Class600#

NPS		O		C		R		B		D		Bolt		L		LRTJ		Lm	
in	mm	in	mm	in	mm	in	mm	in	mm	in	mm	QTY	Diam	in	mm	in	mm	in	mm
2	50	6.50	165.1	1.00	25.4	3.62	91.9	5.00	127.0	0.75	19.1	8	5/8	4.25	108.0	4.25	108.0	4.00	101.6
2 1/2	65	7.50	190.5	1.12	28.4	4.12	104.6	5.88	149.4	0.88	22.4	8	3/4	4.75	120.7	4.75	120.7	4.50	114.3
3	80	8.25	209.6	1.25	31.8	5.00	127.0	6.62	168.1	0.88	22.4	8	3/4	5.00	127.0	5.00	127.0	4.75	120.7
4	100	10.75	273.1	1.50	38.1	6.19	157.2	8.50	215.9	1.00	25.4	8	7/8	5.75	146.1	5.75	146.1	5.50	139.7
5	25	13.00	330.2	1.75	44.5	7.31	185.7	10.50	266.7	1.12	28.4	8	1	6.50	165.1	6.50	165.1	6.25	158.8
6	150	14.00	355.6	1.88	47.8	8.50	215.9	11.50	292.1	1.12	28.4	12	1	6.75	171.5	6.75	171.5	6.50	165.1
8	200	16.50	419.1	2.19	55.6	10.62	269.7	137.5	349.3	1.25	31.8	12	1 1/8	7.50	190.5	7.50	190.5	7.25	184.2
10	250	20.00	508.8	2.50	63.5	12.75	323.9	17.00	431.8	1.38	35.1	16	1 1/4	8.50	215.9	8.50	215.9	8.25	209.6
12	300	22.00	558.8	2.62	66.5	15.00	381.0	19.25	489.0	1.38	35.1	20	1 1/4	8.75	222.3	8.75	222.3	8.50	215.9
14	350	23.75	603.3	2.75	69.9	16.25	412.8	20.75	527.1	1.50	38.1	230	1 1/8	9.25	235.0	9.25	235.0	9.00	228.6
16	400	27.00	685.8	3.00	76.2	18.50	469.9	23.75	603.3	1.62	41.1	20	1 1/2	10.00	254.0	10.00	254.0	9.75	247.7
18	450	29.25	743.0	3.25	82.6	21.00	533.4	25.75	685.4	1.75	44.5	20	1 1/8	10.75	273.1	10.75	273.1	10.50	266.7
20	500	32.00	812.8	3.50	88.9	23.00	584.2	28.50	723.9	1.75	44.5	24	1 1/8	11.25	285.8	11.25	285.8	11.00	279.4
24	600	37.00	939.8	4.00	101.6	27.25	692.2	33.00	838.2	2.00	50.8	24	1 1/8	13.00	330.2	13.25	336.6	12.75	323.9
26	650	40.00	1016.0	4.25	108.0	29.50	749.3	36.00	914.4	2.00	50.8	28	1 1/8	14.00	355.6	14.00	355.6	13.75	349.3
28	700	42.25	1073.2	4.38	111.3	31.50	800.1	38.00	965.2	2.12	53.8	28	2	14.50	368.3	14.50	368.3	14.25	362.0
30	750	44.50	1130.3	4.50	114.3	33.75	857.3	40.25	1022.4	2.12	53.8	28	2	15.00	381.0	14.75	375.4	14.75	374.7
32	800	47.00	1193.8	4.62	117.3	36.00	914.4	42.50	1079.5	2.38	60.5	28	2 1/4	15.50	393.7	15.75	400.1	15.25	387.4
34	850	49.00	1244.6	4.75	120.7	38.00	965.2	44.50	1130.3	2.38	60.5	28	2 1/4	16.25	412.8	16.25	412.8	16.00	406.4
36	900	51.75	1314.5	4.88	124.0	40.25	1022.4	47.00	1193.8	2.62	66.5	28	2 1/2	15.75	400.1	16.75	425.5	15.50	393.7

Class900#

NPS		O		C	
-----	--	---	--	---	--



ANSI Class600Lb/900Lb
0.25"(6.4mm) Raised face joint

ANSI Class600Lb/900Lb
male & female

Class1500#

NPS		O		C		R		B		D		Bolt		L		L _{RTJ}		L _m	
in	mm	in	mm	in	mm	in	mm	in	mm	in	mm	QTY	Diam	in	mm	in	mm	in	mm
2	50	8.50	215.9	1.50	38.1	3.62	91.9	6.50	165.1	1.00	25.4	8	7/8	5.75	146.1	5.75	146.1	5.50	139.7
2 1/2	65	9.62	244.3	1.62	41.1	4.12	104.6	7.50	190.5	1.012	28.4	8	1	6.25	158.8	6.25	158.8	6.00	152.4
3	80	10.50	266.7	1.88	47.8	5.00	127.0	8.00	203.2	1.25	31.8	8	1 1/8	7.00	177.8	7.00	177.8	6.75	171.5
4	100	12.25	311.2	2.12	53.8	6.19	157.2	9.50	241.3	1.38	35.1	8	1 1/4	7.75	196.9	7.75	196.9	7.50	190.5
5	25	14.75	374.7	2.88	73.2	7.31	185.7	11.50	292.1	1.62	41.1	8	1 1/2	9.75	247.7	9.75	247.7	9.50	241.3
6	150	15.50	393.7	3.25	82.6	8.50	215.9	12.50	317.5	1.50	38.1	12	1 3/8	10.25	260.4	10.50	266.7	10.00	254.0
8	200	19.00	482.6	3.62	91.9	10.62	269.7	15.50	393.7	1.75	44.5	12	1 5/8	11.50	292.1	12.75	323.9	11.25	285.8
10	250	23.00	584.2	4.25	108.0	12.75	323.9	19.00	482.6	2.00	50.8	12	1 7/8	13.25	336.6	13.50	342.9	13.00	330.2
12	300	26.50	673.1	4.88	124.0	15.00	381.0	22.50	571.5	2.12	53.8	16	2	14.75	374.7	15.25	387.4	14.50	368.3
14	350	29.50	749.3	5.25	133.4	16.25	412.8	25.00	635.0	2.38	60.5	16	2 1/4	16.00	406.4	16.75	425.5	15.75	400.1
16	400	32.50	825.5	5.75	146.1	18.50	469.9	27.50	704.9	2.62	66.5	16	2 1/2	17.50	444.5	18.50	469.9	17.25	438.2
18	450	36.00	914.4	6.38	162.1	21.00	533.4	30.50	774.7	2.88	73.2	16	2 3/4	19.50	495.3	20.75	527.1	19.25	489.0
20	500	38.75	984.3	7.00	177.8	23.00	584.2	32.75	831.9	3.12	79.2	16	2	21.25	539.8	22.25	565.2	21.00	533.4
24	600	46.00	1168.4	8.00	203.2	27.25	692.2	39.00	990.6	3.62	91.9	16	3 1/2	24.25	616.0	25.50	647.7	24.00	609.6

Class2500#

NPS		O		C		R		B		D		Bolt		L		L _{RTJ}		L _m	
in	mm	in	mm	in	mm	in	mm	in	mm	in	mm	QTY	Diam	in	mm	in	mm	in	mm
2	50	9.25	235.0	2.00	50.8	3.62	91.9	6.75	171.5	1.12	28.4	8	1	7.00	177.8	7.00	177.8	6.75	171.5
2 1/2	65	10.50	266.7	2.25	57.2	4.12	104.6	7.75	196.9	1.25	31.8	8	1 1/8	7.75	196.9	8.00	203.2	7.50	190.5
3	80	12.00	304.8	2.62	66.5	5.00	127.0	9.00	228.6	1.38	35.1	8	1 1/4	8.75	222.3	9.00	228.6	8.50	215.9
4	100	14.00	355.6	3.00	76.2	6.19	157.2	10.75	273.1	1.62	41.1	8	1 1/2	10.00	254.0	10.25	260.4	9.75	247.7
5	25	16.50	419.1	3.62	91.9	7.31	185.7	12.75	323.9	1.88	47.8	8	1 3/4	11.75	298.5	12.25	311.2	11.50	292.1
6	150	19.00	482.6	4.25	108.0	8.50	215.9	14.50	368.3	2.12	53.8	8	2	13.50	342.9	14.00	355.6	13.25	336.6
8	200	21.75	552.5	5.00	127.0	10.62	269.7	17.25	438.2	2.12	53.8	12	2	15.00	381.0	15.50	393.7	14.75	374.7
10	250	26.50	673.1	6.50	165.1	12.75	323.9	21.25	539.8	2.12	66.5	12	2 1/2	19.25	489.0	20.00	508.0	19.00	482.6
12	300	30.00	762.0	7.25	184.2	15.00	381.0	24.38	619.3	2.88	73.2	12	2 3/4	21.25	539.8	22.00	558.8	21.00	533.4

No of internal parts	Seat ring or body	Gate, disc, ball or body	Stem	No of internal parts	Seat ring or body	Gate, disc, ball or body	Stem
01	13Cr	13Cr	13Cr	31	STELLITE	321SS	321SS
02	304SS	304SS	304SS	32	STELLITE	STELLITE	321SS
03	310SS	310SS	310SS	33	347SS	347SS	347SS
04	HARD 13Cr	HARD 13Cr	13Cr	34	STELLITE	347SS	347SS
05	STELLITE	STELLITE	13Cr	35	NICKEL ALLOY	13Cr	13Cr
06	Cu-Ni	13Cr	13Cr	36	A105/PTFE	A105+ENP	A105+ENP
07	13Cr	HARD 13Cr	13Cr	37	A105/PTFE	WCB+ENP	A105+ENP
08	STELLITE	13Cr	13Cr	38	13Cr/PTFE	13Cr	13Cr
09	Cu-Ni	Cu-Ni	Cu-Ni	39	304SS/PTFE	304SS	304SS
10	316SS	316SS	316SS	40	316SS/PTFE	316SS	316SS
11	Cu-Ni	STELLITE	Cu-Ni	41	A105/RPTFE	A105+ENP	A105+ENP
12	STELLITE	316SS	316SS	42	A105/RPTFE	WCB+ENP	A105+ENP
13	ALLOY 20	ALLOY 20	ALLOY 20	43	13Cr/RPTFE	13Cr	13Cr
14	STELLITE	ALLOY 20	ALLOY 20	44	304SS/RPTFE	304SS	304SS
15	STELLITE	STELLITE	304SS	45	316SS/RPTFE	316SS	316SS
16	STELLITE	STELLITE	316SS	46	A105/NYLON	A105+ENP	A105+ENP
17	STELLITE	STELLITE	347SS	47	A105/NYLON	WCB+ENP	A105+ENP
18	STELLITE	STELLITE	ALLOY 20	48	A105/NYLON	304SS	304SS
19	MONEL	MONEL	MONEL	49	A105/NYLON	316SS	316SS
20	BRONZE	BRONZE	13Cr	50	13Cr/NYLON	13Cr	13Cr
21	HASTELLOY B	HASTELLOY B	HASTELLOY B	51	304SS/NYLON	304SS	304SS
22		HASTELLOY C	HASTELLOY C	52	316SS/NYLON	316SS	316SS
23	STELLITE	304SS	304SS	53	A105/PEEK	A105+ENP	A105+ENP
24	304LSS	304LSS	304LSS	54	A105/PEEK	WCB+ENP	A105+ENP
25	STELLITE	304LSS	304LSS	55	13Cr/PEEK	13Cr	13Cr
26	STELLITE	STELLITE	304LSS	56	304SS/PEEK	304SS	304SS
27	316LSS	316LSS	316LSS	57	316SS/PEEK	316SS	316SS
28	STELLITE	316LSS	316LSS				
29	STELLITE	STELLITE	316LSS				
30	321SS	321SS	321SS				

Note: please indicate it directly in the order for the internal part' smaterial uncovered in the table

- | | | | | |
|------------------------------------|-----------------------------------|--|---------------------------------------|---------------------------------|
| Архангельск (8182)63-90-72 | Ижевск (3412)26-03-58 | Магнитогорск (3519)55-03-13 | Пермь (342)205-81-47 | Сургут (3462)77-98-35 |
| Астана (7172)727-132 | Иркутск (395)279-98-46 | Москва (495)268-04-70 | Ростов-на-Дону (863)308-18-15 | Тверь (4822)63-31-35 |
| Астрахань (8512)99-46-04 | Казань (843)206-01-48 | Мурманск (8152)59-64-93 | Рязань (4912)46-61-64 | Томск (3822)98-41-53 |
| Барнаул (3852)73-04-60 | Калининград (4012)72-03-81 | Набережные Челны (8552)20-53-41 | Самара (846)206-03-16 | Тула (4872)74-02-29 |
| Белгород (4722)40-23-64 | Калуга (4842)92-23-67 | Нижний Новгород (831)429-08-12 | Санкт-Петербург (812)309-46-40 | Тюмень (3452)66-21-18 |
| Брянск (4832)59-03-52 | Кемерово (3842)65-04-62 | Новокузнецк (3843)20-46-81 | Саратов (845)249-38-78 | Ульяновск (8422)24-23-59 |
| Владивосток (423)249-28-31 | Киров (8332)68-02-04 | Новосибирск (383)227-86-73 | Севастополь (8692)22-31-93 | Уфа (347)229-48-12 |
| Волгоград (844)278-03-48 | Краснодар (861)203-40-90 | Омск (3812)21-46-40 | Симферополь (3652)67-13-56 | Хабаровск (4212)92-98-04 |
| Вологда (8172)26-41-59 | Красноярск (391)204-63-61 | Орел (4862)44-53-42 | Смоленск (4812)29-41-54 | Челябинск (351)202-03-61 |
| Воронеж (473)204-51-73 | Курск (4712)77-13-04 | Оренбург (3532)37-68-04 | Сочи (862)225-72-31 | Череповец (8202)49-02-64 |
| Екатеринбург (343)384-55-89 | Липецк (4742)52-20-81 | Пенза (8412)22-31-16 | Ставрополь (8652)20-65-13 | Ярославль (4852)69-52-93 |
| Иваново (4932)77-34-06 | Киргизия (996)312-96-26-47 | Казахстан (772)734-952-31 | Таджикистан (992)427-82-92-69 | |

<https://sedelon.nt-rt.ru/> || sde@nt-rt.ru